

Environmental Product Declaration

In accordance with ISO 14025 for:

Kissen Table & Workstation Range



Environmental Product Declaration (EPD)

in accordance with ISO 14025

EPD Registration No. x-x-xxxxx | Version x.x

Issued xx xxxxx xxxx | Revised xx xxxxxx xxxx | Valid until xx xxxxx xxxx

Company Information

Zenith Interiors designs, manufactures, and distributes leading-edge products for corporate and commercial environments that inspire people and organisations to excel (Zenith Interiors, 2019).

Product-related or management system-related certifications:

ISO 9001 – Quality management systems

ISO 14001 – Environmental Management Systems

AS 4801 Health and Safety



Name and location of production site: Zenith Interiors, Manukau, Auckland, New Zealand.

Kissen Table & Workstations

Designed for the physical and functional requirements of today's diverse work modes, Kissen fosters connection whether in a social or collaborative setting. The family of tables and workstations features a strong timber aesthetic with a distinct leg profile. The under-structure design makes economic use of the components and accessory options to provide ease of team expression and identity.

Kissen tables provide work surfaces in a broad range of sizes for both seated and standing heights of 720 mm, 750 mm and 1050 mm respectively, with the option of mobility castors. Kissen legs are available linear or with a 45° corner leg for a softer domestic visual appeal.

Kissen Workstation is engineered to optimise team based working with numerous configuration options and customisation to enrich the work environment. Integrated with ZENITH Ctrl™, KISSEN Workstation has access to a range of accessories.

UN CPC code: 3812/3813/3814 (EPD International, 2019).

Geographical scope: Final product produced in Manukau, Auckland for the New Zealand market.



Functional unit / declared unit: One Kissen table with length 1.80 m, depth 1.65 m, height 0.72 m.

Scope: Cradle to grave life cycle of one Kissen table.

Reference service life: 15 years (EPD International, 2019).

Databases and LCA software used: AusLCI 2.2, ecoinvent 3.6, Industry Data 2.0 databases; SimaPro 9.1.0.11 software

Data collection period: July 2019 – February 2020



An Environmental Product Declaration, or EPD, is a standardised and verified way of quantifying the environmental impacts of a product that is based on a consistent set of rules known as Product Category Rules (PCR). EPDs within the same product category from different programs may not be comparable. This EPD is for a specific furniture product and follows the Product Category Rules 'Furniture, except seats and mattresses v2.01'.

Declaration Owner:

Zenith Interiors

Web: zenithinteriors.com

Email: info@zenithinteriors.com

Phone: 1300 013 013

EPD produced by:

Good Environmental Choice Australia (GECA)

Web: geca.eco

Email: enquiries@geca.org.au

Phone: 02 9699 2850

EPD program operator:

The Australasian EPD® Programme Ltd

Web: www.epd-australasia.com

Email: info@epd-australasia.com

Post: c/o Kendons Chartered Accountants PO Box 31045, Lower Hutt 5040, New Zealand

PCR Information

PCR:

Product Category Rules 'Furniture, except seats and mattresses v2.01'.

PCR review conducted by:

Independent verification of the declaration and data, according to ISO 14025:

- EPD process certification (Internal)
- EPD verification (External)

Product Information

The Kissen table is 1.80 m long, 1.65 m deep and 0.72 m high. It consists of a particleboard top, a beam with steel and aluminium components and legs made of either aluminium or timber (displayed as two separate options in this Environmental Product Declaration).

The materials used are sourced from different suppliers in Australia as well as Shanghai, China and transferred to Zenith's Melbourne factory for the manufacturing of the final product.

The final manufacturing process includes powder coating of the metals where the surfaces are first cleaned, then go through a powder coating process after which they are cured with heat. The rest of the components are assembled in the factory.

Background Data

Australian inputs were primarily modelled with the AusLCI database; the ecoinvent v3 database was used where suppliers were from overseas. All background data used was less than ten years old.

System Boundaries and Life Cycle Stages

Life Cycle Stages

This Environmental Product Declaration analyses the production of a Kissen table, including the raw material extraction, the manufacture of components from suppliers, the assembly of the table as well as the end of its service life. The different Kissen table components are transported to Sandringham, Victoria where the table is assembled. The product is then packed in cardboard boxes and supplied to showrooms as well as clients APAC.

Table 1: Life cycle stages of Kissen table

Process	Module	Description	Life cycle stages	Declared modules
Upstream process	A1	Raw materials supply	A1-A3: Manufacturing stage	X
	A2	Components/raw materials manufacture		X
Core process	A3	Components transport to Zenith factory		X
	A4	Manufacturing of final products		X
Downstream process	B1	Transport of final product	B1: Final product transport	X
	B2	Maintenance	B2-B4: Usage stage	X
	B3	Replacement		X
	B4	Operational energy use		X
	C1	Transport	C1-C3: End-of-life	X

	C2	Manual dismantling		X
	C3	Waste disposal		X
Other Environmental Stage	D	Recycling	Other Environmental Stage	X

System Diagram

An 'upstream – core – downstream' flow is adopted in this study. The upstream processes include the flows of raw materials. The core processes include all activities which the manufacturing organisation is in control of, i.e. transportation of the components to the manufacturing factory and the actual process of manufacturing. The downstream processes include the steps that are controlled by the user and the disposal or recycling options of the products.

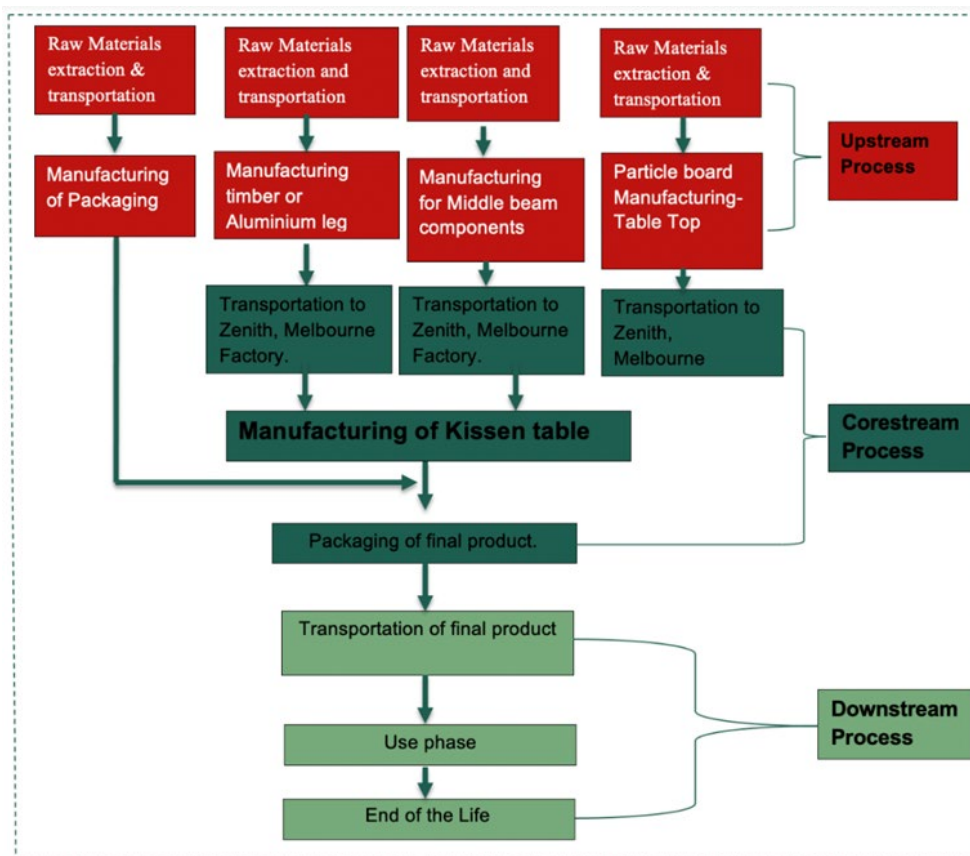


Figure 1: Process diagram Kissen table

End-of-life Scenarios

Zenith Interiors operates a take-back scheme for its furniture. Likewise, furniture owners resell or donate the furniture by themselves to extend its lifetime. In the end-of life for other environmental stages (represented as modules **Error! Reference source not found.**), all aluminium and steel parts of the product are recycled after being manually dismantled. This is noted separately due to Polluter pays principle (PPP).