

House Fabric Specification



Zenith Fabrics

Cute	2
Cobble	4
Danny A	6
King	8
Renzo Leather	10
Van Gogh Leather	12

Zenith Fabrics

Cute



Upholstery Fabric

Application: Heavy Duty Commercial Upholstery for Screens

Composition: 100% Polyester

Width: 142cm

Weight: 320g/m2

Durability: 40,000 Martindales

Pilling: 4

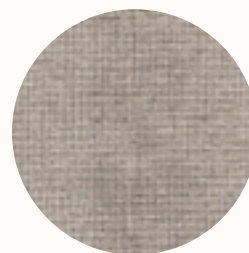
Cleaning: 30° wash cycle, do not bleach, do not tumble dry, low temperature iron



051
White



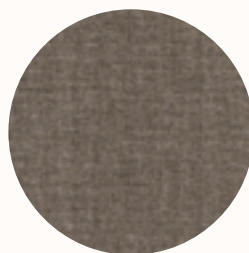
008
Cream



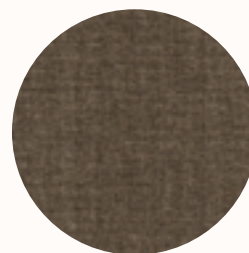
026
Champagne



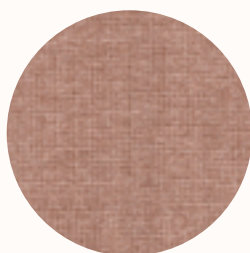
029
Linen



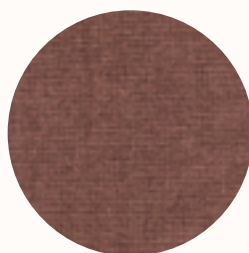
041
Mushroom



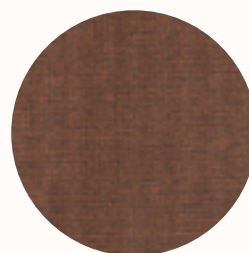
007
Cappuccino



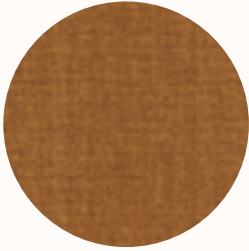
050
Pale Pink



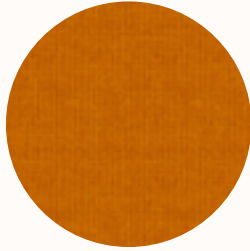
019
Musk



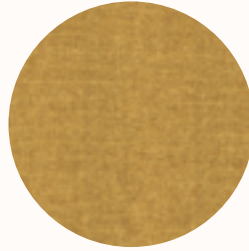
047
Caramel



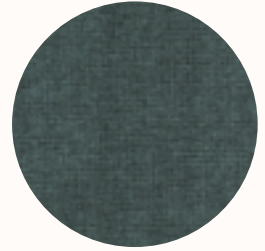
027
Pumpkin



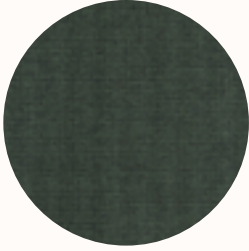
031
Gold



049
Yellow



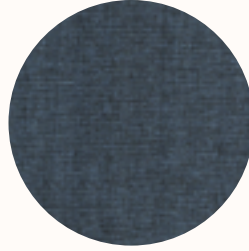
001
Kellygreen



013
Green



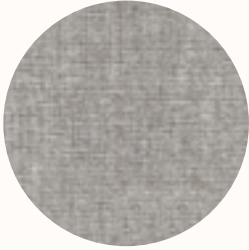
012
Steelblue



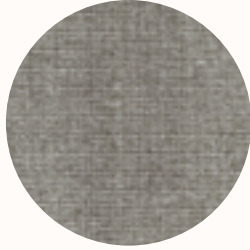
028
Chambray



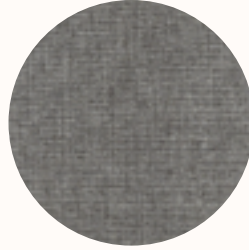
045
Blue



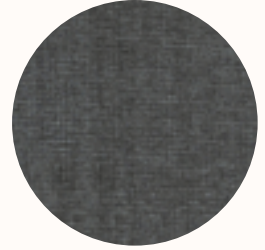
009
Light Grey



042
Greymist



018
Grey



021
Anthracite



073
Black

Zenith Fabrics

Cobble



Upholstery Fabric

Application: Heavy Duty Commercial Upholstery

Composition: 100% Polyester

Width: 142cm

Weight: 320g/m2

Durability: 40,000 Martindales

Pilling: 4

Cleaning: 30° wash cycle, do not bleach, do not tumble dry, low temperature iron



051
White



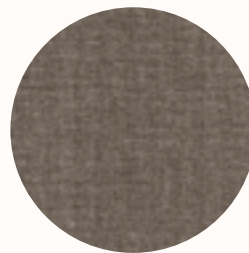
008
Cream



026
Champagne



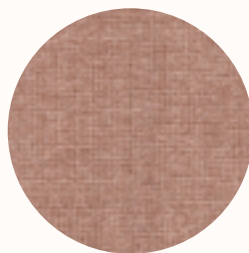
029
Linen



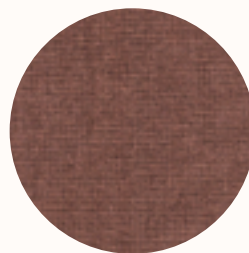
041
Mushroom



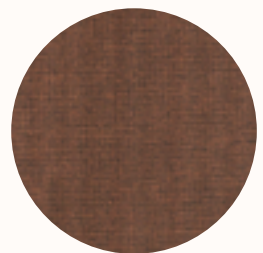
007
Cappuccino



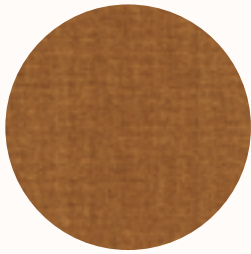
050
Pale Pink



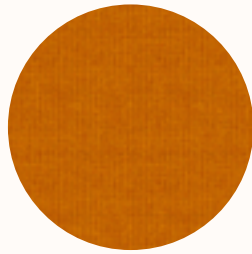
019
Musk



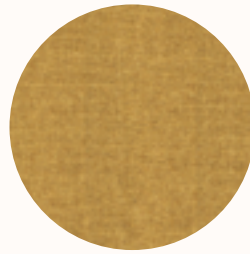
047
Caramel



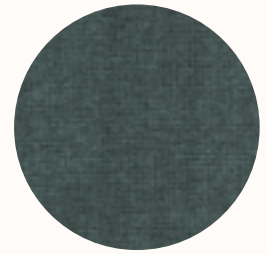
027
Pumpkin



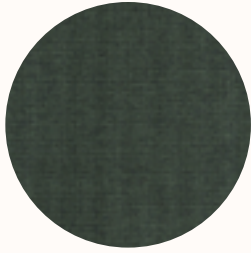
031
Gold



049
Yellow



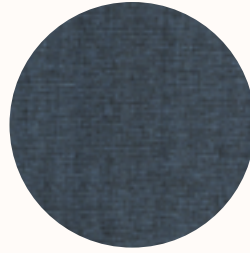
001
Kellygreen



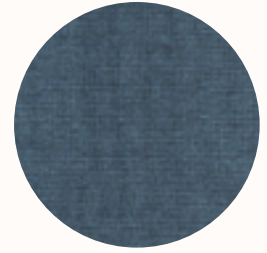
013
Green



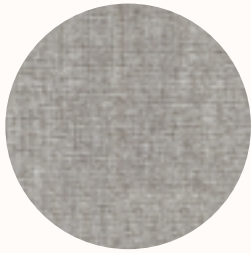
012
Steelblue



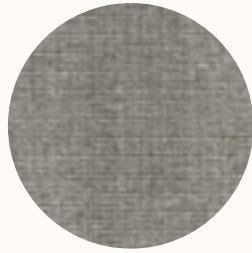
028
Chambray



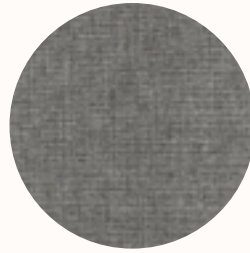
045
Blue



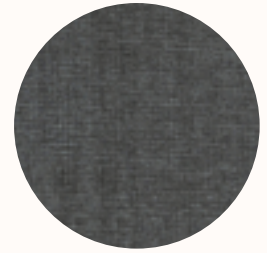
009
Light Grey



042
Greymist



018
Grey



021
Anthracite



073
Black

Zenith Fabrics

Danny A



Upholstery Fabric

Application: Heavy Duty Commercial Upholstery

Composition: 100% Polyester

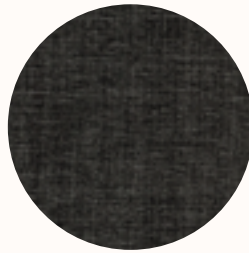
Width: 142cm

Weight: 410g/m²

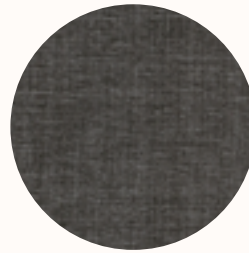
Durability: 40,000 Martindales

Pilling: 4

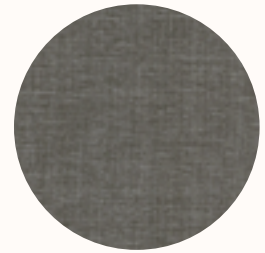
Cleaning: 30° wash cycle, do not bleach, do not tumble dry, low temperature iron



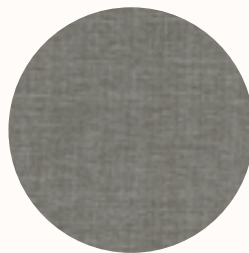
016
Black



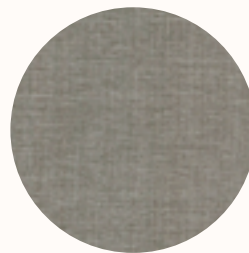
017
Medium Grey



018
Anthracite



020
Grey



021
Greymist



022
Light Grey



002
Cream



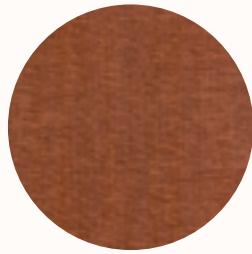
003
Natural



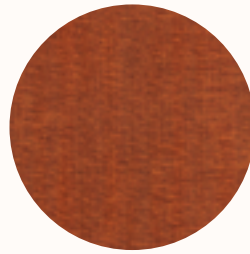
005
Walnut



006
Brown



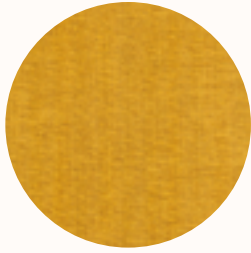
037
Caramel



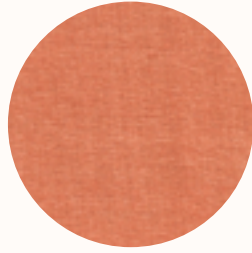
038
Fennelseed



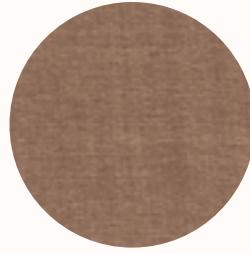
043
Pumpkin



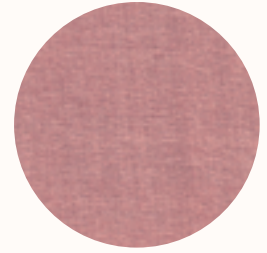
007
Yellow



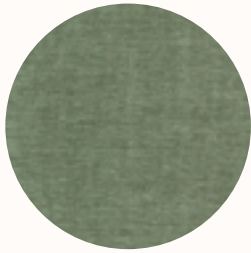
039
Coral



204
Almond



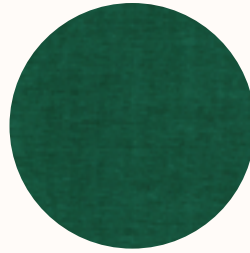
011
Blush



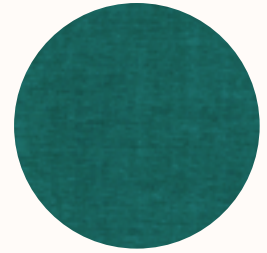
352
Forest Green



031
Leaf



024
Green



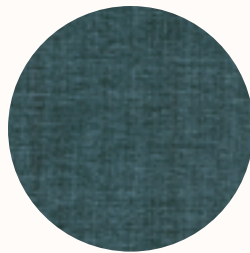
025
Peacock



029
Blue



033
Steelblue



027
Niagara

Zenith Fabrics

King



Upholstery Fabric

Application: Heavy Duty Commercial Upholstery

Composition: 92% Polyester, 5% Cotton, 3% Nylon

Width: 142cm

Weight: 480g/m²

Durability: 40,000 Martindales

Pilling: 3-4

Cleaning: 30° wash cycle, do not bleach, do not tumble dry, low temperature iron



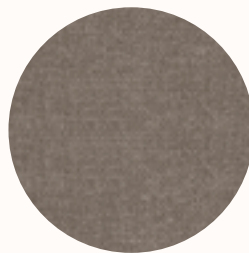
100



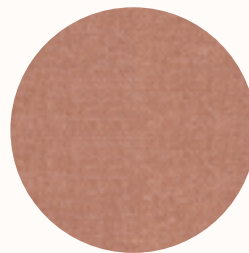
110



120



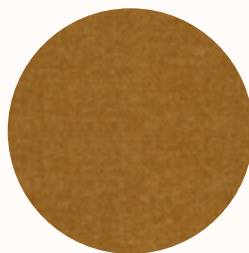
170



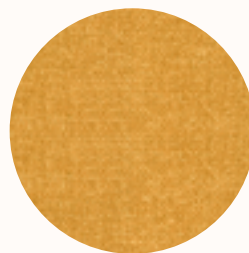
180



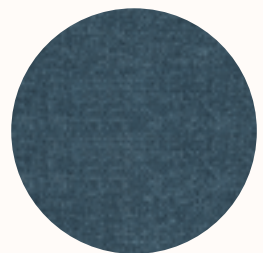
273



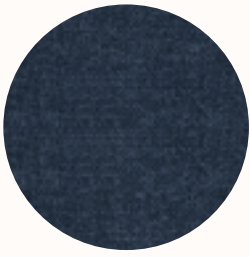
274



280



303



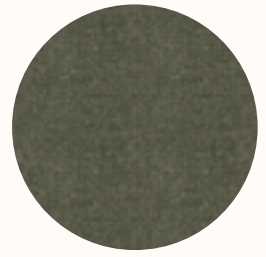
330



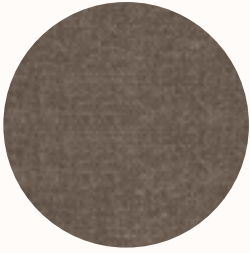
340



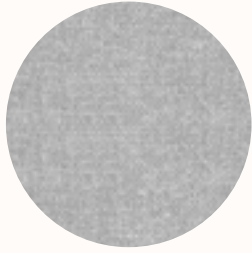
355



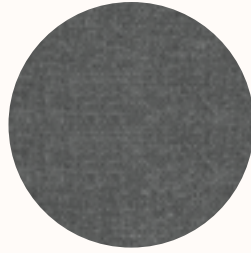
357



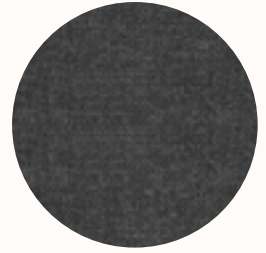
442



451



453



456



500

La Chic Studio Leather

Renzo

Upholstery Leather

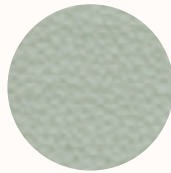
Type: Nature Grain Leather

Flame Resistance: The leather is not flammable, but not fire retardant either.

Hide Size: 5sqm

Thickness: 1.1-1.3mm

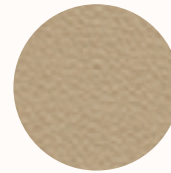
Cleaning: Regularly clean and dust your leather with a clean dry cloth. Use dishwashing liquid to clean oil stain. Do not use cleaning product with highly corrosive detergents such as alcohol and disinfectant.



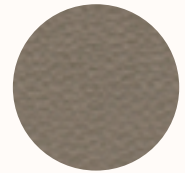
01



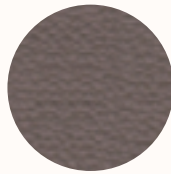
02



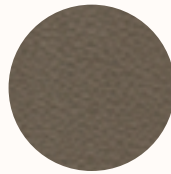
03



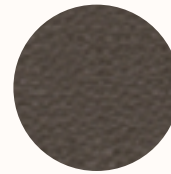
04



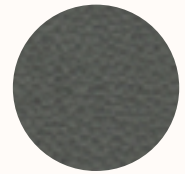
05



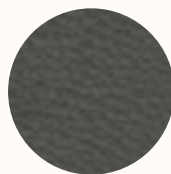
06



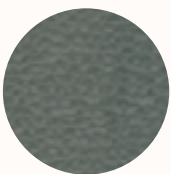
07



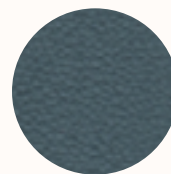
08



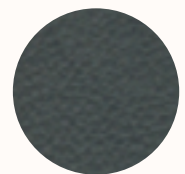
09



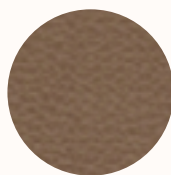
10



11



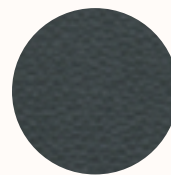
12



13



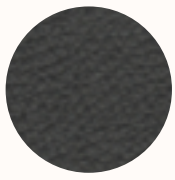
14



15



16



17



18



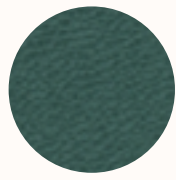
19



20



21



22



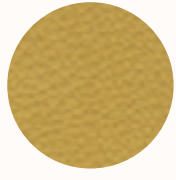
23



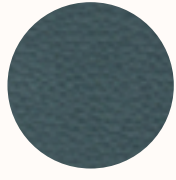
24



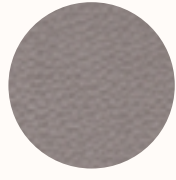
25



26



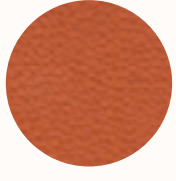
27



28



29



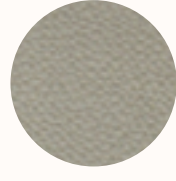
30



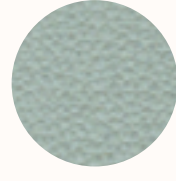
31



32



33



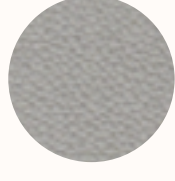
34



35



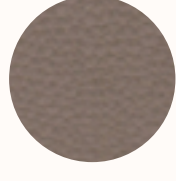
36



37



38



39

Note: Renzo range not suitable for Jac Side, Tub or Stool models.

La Chic Studio Leather

Van Gogh

Upholstery Leather

Type: Semi Aniline Leather

Flame Resistance: The leather is not flammable, but not fire retardant either.

Hide Size: 5sqm

Thickness: 1.1-1.3mm

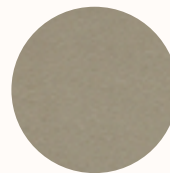
Cleaning: Regularly clean and dust your leather with a clean dry cloth. Use dishwashing liquid to clean oil stain. Do not use cleaning product with highly corrosive detergents such as alcohol and disinfectant.



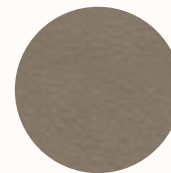
LCT001



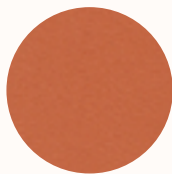
LCT002



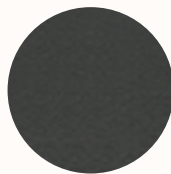
LCT003



LCT004



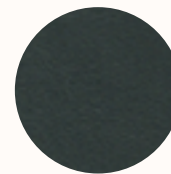
LCT008



LCT014



LCT015



LCT016



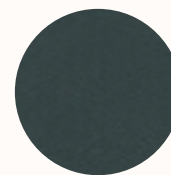
LCT017



LCT019



LCT022



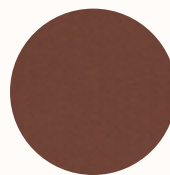
LCT031



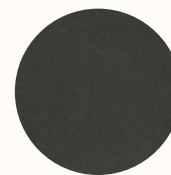
LCT032



LCT038



LCT039



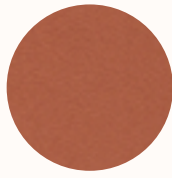
LCT041



LCT043



LCT044



LCT045



LCT046