

House Fabric Specification



Zenith Fabrics

Cobble	2
Danny A	4
King	6
Renzo Leather	8
Van Gogh Leather	10

Zenith Fabrics

Cobble



Upholstery Fabric

Application: Heavy Duty Commercial Upholstery

Composition: 100% Polyester

Width: 142cm

Weight: 400g/m²

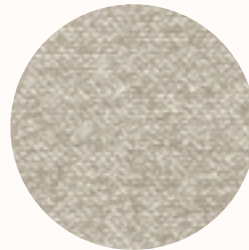
Durability: 40,000 Martindales

Pilling: 4

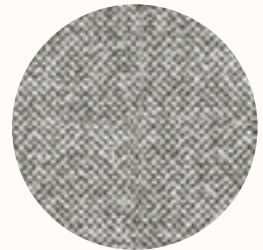
Cleaning: 30° wash cycle, do not bleach, do not tumble dry, low temperature iron



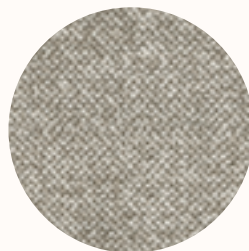
100



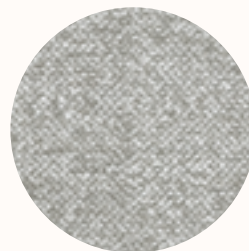
110



111



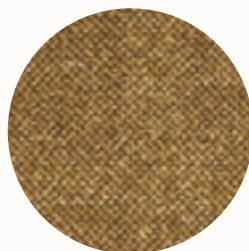
120



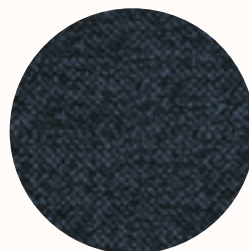
151



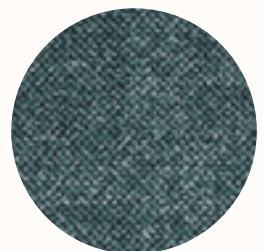
182



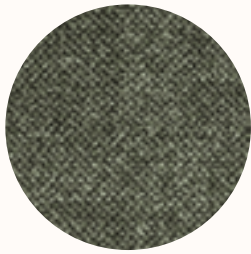
272



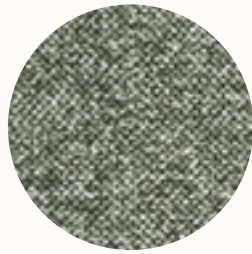
320



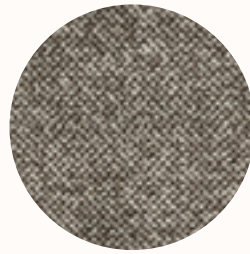
340



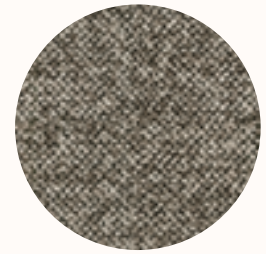
355



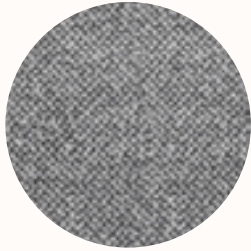
356



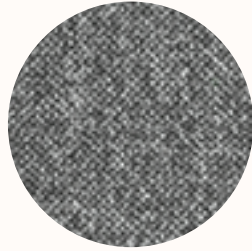
439



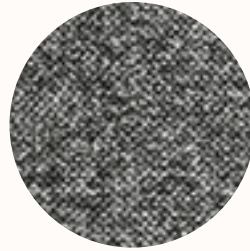
440



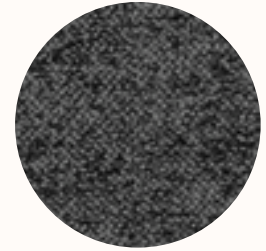
451



453



455



457

Zenith Fabrics

Danny A



Upholstery Fabric

Application: Heavy Duty Commercial Upholstery

Composition: 100% Polyester

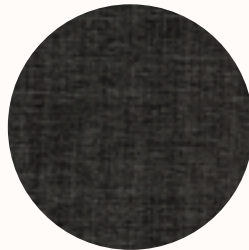
Width: 142cm

Weight: 410g/m²

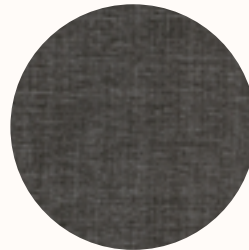
Durability: 40,000 Martindales

Pilling: 4

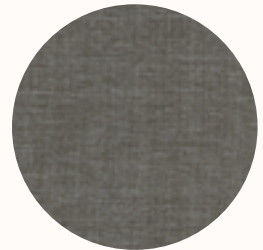
Cleaning: 30° wash cycle, do not bleach, do not tumble dry, low temperature iron



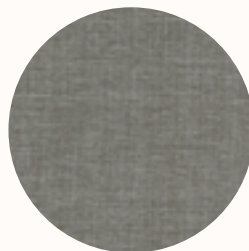
016
Black



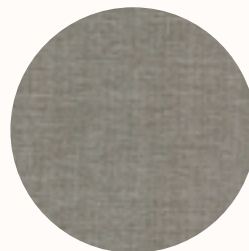
017
Medium Grey



018
Anthracite



020
Grey



021
Greymist



022
Light Grey



002
Cream



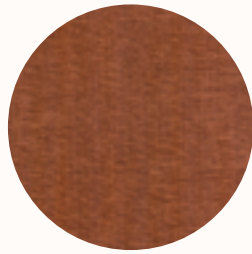
003
Natural



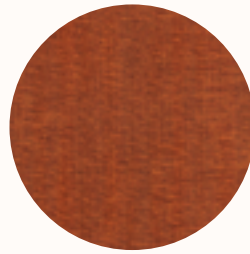
005
Walnut



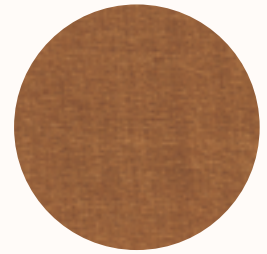
006
Brown



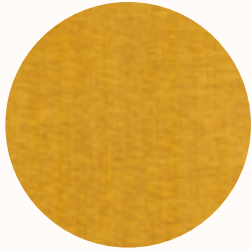
037
Caramel



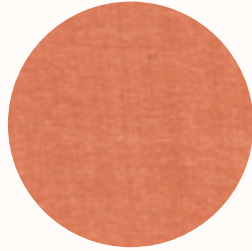
038
Fennelseed



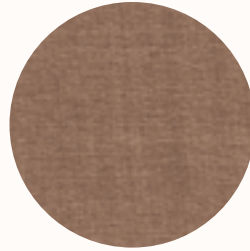
043
Pumpkin



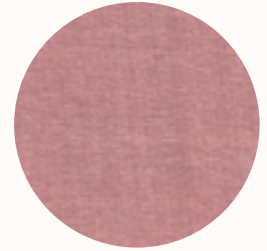
007
Yellow



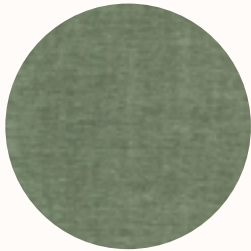
039
Coral



204
Almond



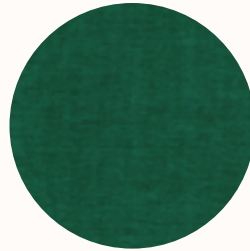
011
Blush



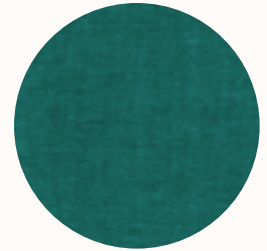
352
Forest Green



031
Leaf



024
Green



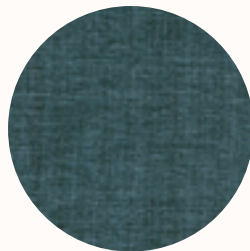
025
Peacock



029
Blue



033
Steelblue



027
Niagara

Zenith Fabrics

King



Upholstery Fabric

Application: Heavy Duty Commercial Upholstery

Composition: 92% Polyester, 5% Cotton, 3% Nylon

Width: 142cm

Weight: 440g/m²

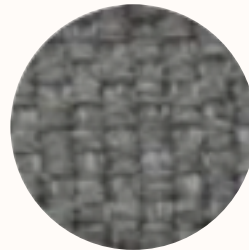
Durability: 40,000 Martindales

Pilling: 3-4

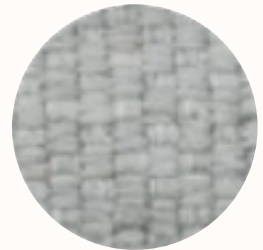
Cleaning: 30° wash cycle, do not bleach, do not tumble dry, low temperature iron



452



450



451



100



101



111



171



120



432



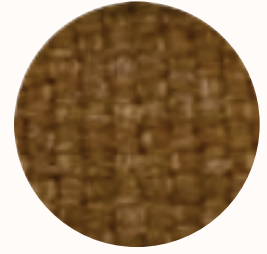
421



501



183



251



200



181



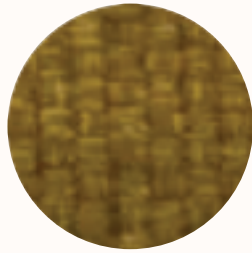
500



275



276



274



351



354



342



304



313



330

La Chic Studio Leather

Renzo

Upholstery Leather

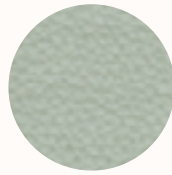
Type: Nature Grain Leather

Flame Resistance: The leather is not flammable, but not fire retardant either.

Hide Size: 5sqm

Thickness: 1.1-1.3mm

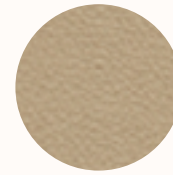
Cleaning: Regularly clean and dust your leather with a clean dry cloth. Use dishwashing liquid to clean oil stain. Do not use cleaning product with highly corrosive detergents such as alcohol and disinfectant.



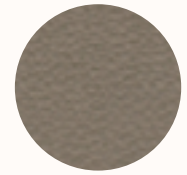
01



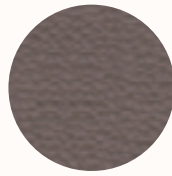
02



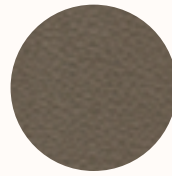
03



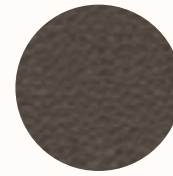
04



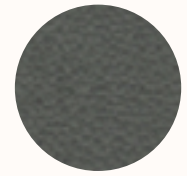
05



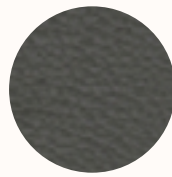
06



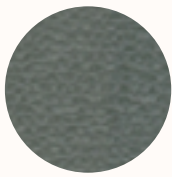
07



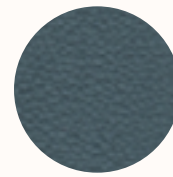
08



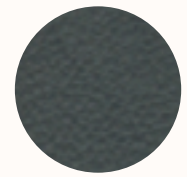
09



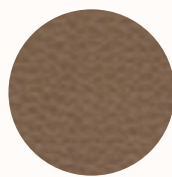
10



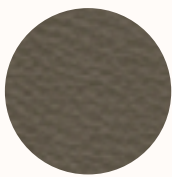
11



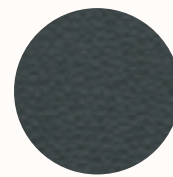
12



13



14



15



16



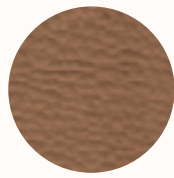
17



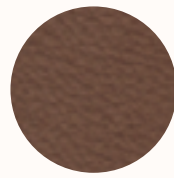
18



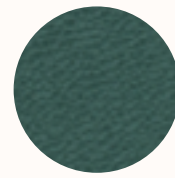
19



20



21



22



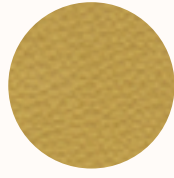
23



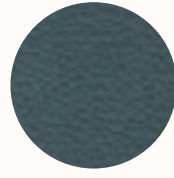
24



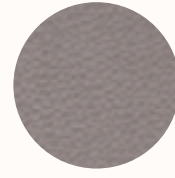
25



26



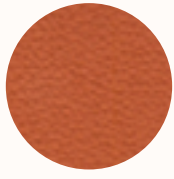
27



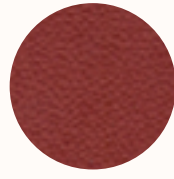
28



29



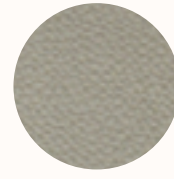
30



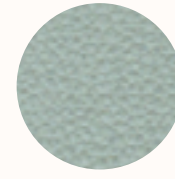
31



32



33



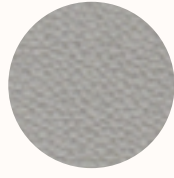
34



35



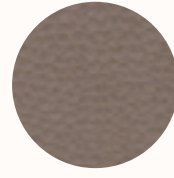
36



37



38



39

Note: Renzo range not suitable for Jac Side, Tub or Stool models.

La Chic Studio Leather

Van Gogh

Upholstery Leather

Type: Semi Aniline Leather

Flame Resistance: The leather is not flammable, but not fire retardant either.

Hide Size: 5sqm

Thickness: 1.1-1.3mm

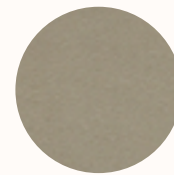
Cleaning: Regularly clean and dust your leather with a clean dry cloth. Use dishwashing liquid to clean oil stain. Do not use cleaning product with highly corrosive detergents such as alcohol and disinfectant.



LCT001



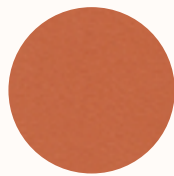
LCT002



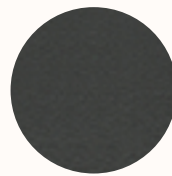
LCT003



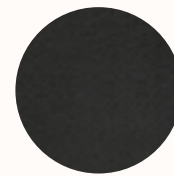
LCT004



LCT008



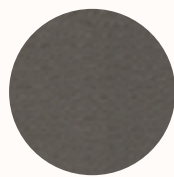
LCT014



LCT015



LCT016



LCT017



LCT019



LCT022



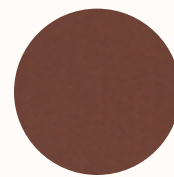
LCT031



LCT032



LCT038



LCT039



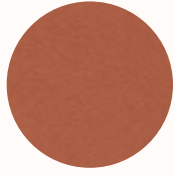
LCT041



LCT043



LCT044



LCT045



LCT046