

NORR11

Fabric/Leather Specification



CONTENTS:

Fabric

Upholstery Category 0 [2](#)

Grain, Cura, Chili, Step Melange, Megan

Upholstery Category 1 [8](#)

Mumble, Remix, Fame

Upholstery Category 2 [13](#)

Barnum, Breeze Fusion, Canvas, Keiga

Upholstery Category 3 [17](#)

Fiord, Hallingdal, Steelcut Trio, Savanna, Zero
Alpaca

Upholstery Category 4 [25](#)

Moss, Safire, Baru, Sisu, Doré, Ismay

Outdoor

Outdoor Upholstery [31](#)

Savane, Natte, Leisure

Leather

Leather Category I [32](#)

Ultra, Ultra Crib 5, Matara (Faux)

Leather Category II [35](#)

Nuance, Flux, Envy

Leather Category III [38](#)

Dunes, Terra, Spectrum

Leather Category IV [42](#)

Sheepskin

CAT 0 - Grain | Gabriel

Composition: Single-coloured: 92% Post-Consumer Polyester, 8% Polyester

Two-coloured: 80% Post-Consumer Polyester, 20% Polyester

Durability: 100.000 Martindale



CAT 0 - Cura | Gabriel

Composition: 98% post-consumer recycled polyester, 2% polyester

Durability: 100.000 Martindale



CAT 0 - Chili | Gabriel

Composition: 100% post-consumer recycled polyester fr (frinside the fiber)

Durability: 60.000 Martindale



CAT 0 - Step Melange | Gabriel

Composition: 100% Trevira cs

Durability: 100.000 Martindale



Step Melange
60004



Step Melange
60011



Step Melange
60021



Step Melange
60090



Step Melange
60092



Step Melange
60345



Step Melange
60346



Step Melange
61103



Step Melange
61104



Step Melange
61149



Step Melange
61151



Step Melange
61152



Step Melange
61286



Step Melange
61287



Step Melange
61288



Step Melange
61289



Step Melange
61291



Step Melange
61293



Step Melange
62057



Step Melange
62073



Step Melange
62143



Step Melange
62144



Step Melange
62146



Step Melange
63075



Step Melange
63082



Step Melange
63136



Step Melange
63137



Step Melange
63138



Step Melange
63139



Step Melange
64013



Step Melange
64159



Step Melange
64178



Step Melange
64179



Step Melange
64267



Step Melange
64270



Step Melange
65011



Step Melange
65018



Step Melange
65023



Step Melange
65047



Step Melange
66018



Step Melange
66019



Step Melange
66148



Step Melange
66149



Step Melange
66150



Step Melange
66151



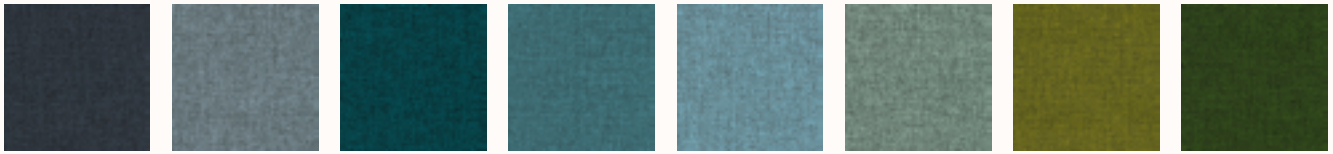
Step Melange
66152



Step Melange
66263



Step Melange
66264



Step Melange
66265

Step Melange
67004

Step Melange
67007

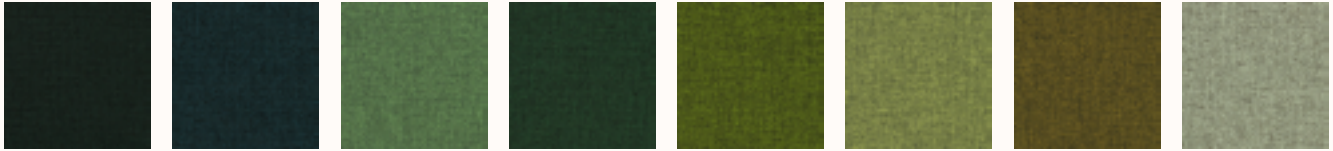
Step Melange
67072

Step Melange
67135

Step Melange
68118

Step Melange
68119

Step Melange
68120



Step Melange
68121

Step Melange
68158

Step Melange
68159

Step Melange
68161

Step Melange
68162

Step Melange
68163

Step Melange
68165

Step Melange
68298



Step Melange
68299

Step Melange
68300

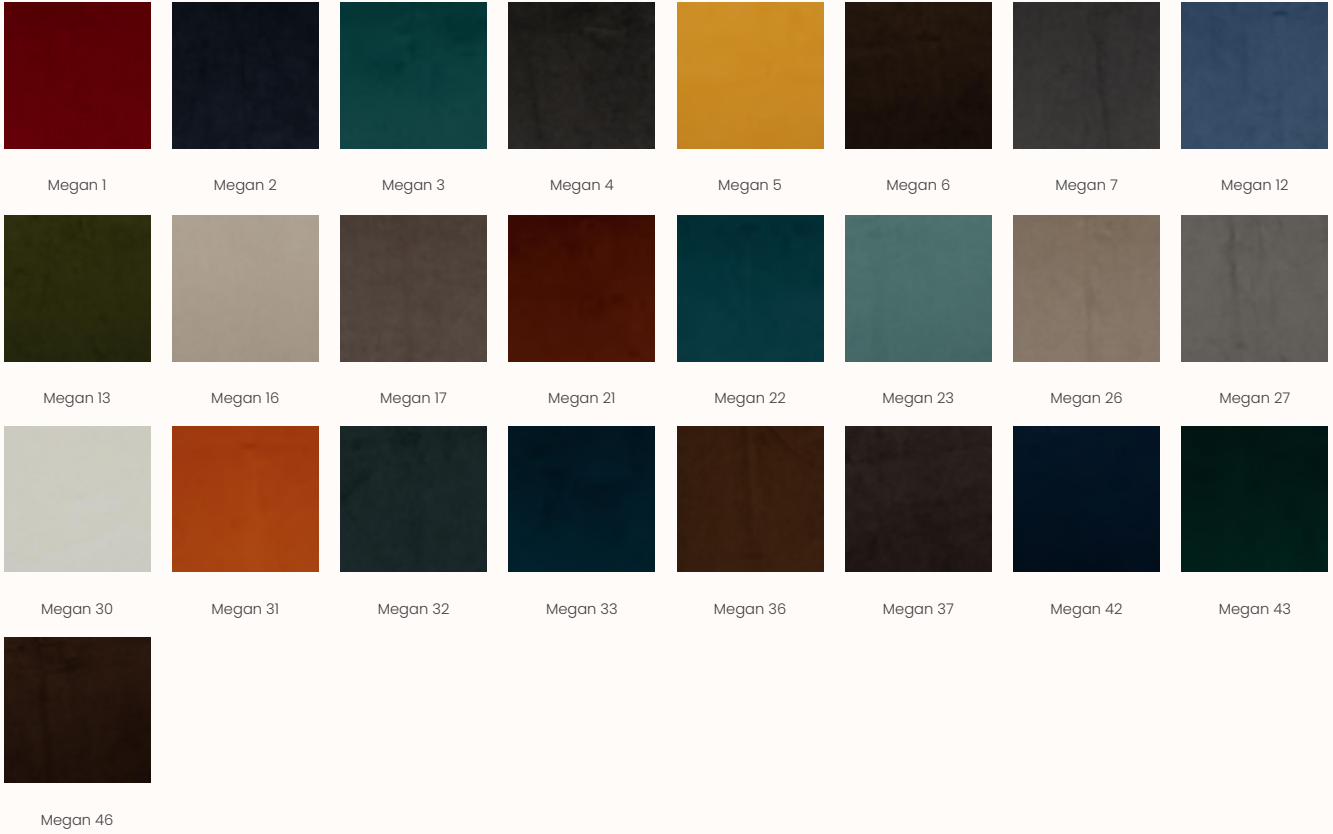
Step Melange
68301

CAT 0 - Megan | Glamour

Megan is a velvet in a sparkling color scheme. High, straight standing piles in a durable quality for all types of environments.

Composition: 100% Polyester

Durability: 170.000 Martindale



CAT 1 - Mumble Glamour

Composition: 100% post-consumer recycled polyester fr (frinside the fiber)

Durability: 60.000 Martindale



CAT 1 - Remix | Kvadrat

Remix 2 looks uni-coloured from a distance but reveals subtle details and colour contrasts when viewed close-up. The textile features a tight, minimalistic weave, and derives its lively colour play from a combination of two different mélangé yarns, which each combine up to three hues.

The new colours – carefully selected from 2600 samples– are inspired by an extensive study of traditional Indigo dyeing undertaken by Giulio Ridolfo on his travels. Centred around deep combinations of blues and rich natural reds, they also include subtly coloured neutrals.

Composition: 90% new wool (worsted), 10% nylon

Width: Approx 140cm

Weight: 420 g/m

Durability: 100,000 Martindale

Piling: 4

Sustainability: EU ecolabel "The Flower", Greenguard Gold certified, HPD, EPD





CAT 1 - Fame | Gabriel

Fame is a unique woollen upholstery fabric with a wearability of 200,000 Martindale, and at the same time is extra soft and stretchable. The colour scale is very elegant and vibrant.

Composition: 95% New Zealand wool, 5% polyamide

Width: Approx 140cm

Weight: 630 g/m

Durability: 200,000 Martindale

Piling: 4

Sustainability: Standard 100 by OEKO-TEX, EU Ecolabel





67016



67067



67068



67069



68004



68035



68143



68144



68145



68146



68147



68148

CAT 2 - Barnum Bouclé | Glamour

Barnum Bouclé is a textured bouclé wool with a comfortable soft feel and is available in a various attractive colors. The fabric is durable and heavy enough to offer some acoustic absorption but soft enough to provide warmth and comfort.

Composition: 45% Cotton, 19% Viscose, 15% Wool, 13% Acetate, 8% Nylon

Width: 140cm

Weight: 950 g

Durability: 60.000 Martindale

Piling: 4



CAT 2 - Breeze Fusion | Gabriel

Breeze Fusion is a richly textured, woollen upholstery fabric brought to life by intriguing colour blends. It offers superior durability, inherent fire resistance and a strong environmental profile.

Composition: 88% New Zealand wool / 12% polyamide

Width: 140 cm

Weight: 590 g/lin. m

Durability: 100,000 Martindale

Piling: 4-5



CAT 2 - Canvas | Kvadrat

Canvas is a vibrant woollen upholstery textile created by Giulio Ridolfo. Particularly well-suited to large surfaces thanks to its pronounced structure, it features a soft weave and an expanded palette inspired by the landscapes of Skagen, Denmark.

The melange yarn used to craft Canvas combines three colours, with six hues in every colour way. Consequently, the textile offers exceptional colour richness and an intriguing expression. From a distance, it has the calm surface of a uni-coloured textile. But, get closer, and shimmering colour nuances, delicate contrasts and an elegant structure emerge.

Composition: 90% new wool (worsted), 10% nylon

Width: Approx 140cm

Weight: 480 g/m

Durability: 100,000 Martindale

Piling: 4

Sustainability: EU ecolabel "The Flower", Greenguard Gold certified, HPD, EPD



CAT 2 - Keiga | Sahco

Rich in nuance like a Nordic landscape and suitable for any furnishing style. Keiga is a foundational fabric that works with everything, vintage or modern, angular or organic, art deco or light toned Scandi. Matt wool grounds the rich structure, enlivened by the contrast from the shiny yarns.

Composition: 38% new wool, 37% viscose, 16% linen, 9% nylon

Width: Approx 140cm

Weight: 740 g/m

Durability: 50,000 Martindale

Piling: 3-4

Sustainability: Greenguard Gold certified, HPD



CAT 3 - Fiord | Kvadrat

Fiord is a versatile woollen upholstery textile with a subtle three-dimensional look. Originally designed by Norwegian designer Tone Barnung, it comes in refreshed colours created in collaboration with Louise Sigvardt.

The construction of Fiord combines a mélangé yarn with a uni-coloured yarn that creates pearl-like dots that play across the textile's surface. This sophisticated expression reflects a key source of inspiration behind the design: moonlight glittering like pearls on the rippling waters of a Norwegian fjord.

Composition: 92% new wool (worsted), 8% nylon

Width: Approx 140cm

Weight: 493 g/m

Durability: 60,000 Martindale

Piling: 4-5

Sustainability: EU Ecolabel, Greenguard Gold, HPD, EPD



CAT 3 - Hallingdal | Kvadrat

Kvadrat's first textile 'Hallingdal' has become the archetype of woollen textiles. The very durable upholstery fabric was originally designed in 1965 by Nanna Ditzel, and is now available in a version with an updated colour scale: Hallingdal 65.

Hallingdal 65 is made of wool and viscose, which complement each other well: the wool provides excellent durability and flexibility, whilst the viscose adds brilliance and depth to the colour. Both materials are dyed before they are spun, which highlights the rich texture of the fabric.

Composition: 70% new wool, 30% viscose

Width: Approx 130cm

Weight: 795 g/m

Durability: 100,000 Martindale

Piling: 3-4

Sustainability: EU Ecolabel, Greenguard Gold, HPD, EPD





0773



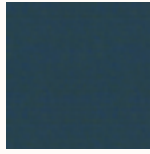
0810



0840



0850



0890



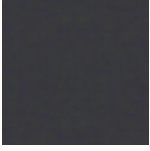
0907



0944



0960



0968



0980

CAT 3 – Steelcut Trio | Kvadrat

Steelcut Trio is a hardwearing woollen upholstery textile with the same construction as Steelcut. Originally designed by Frans Dijkmeijer, it comes in updated colourways crafted by Giulio Ridolfo.

The three-dimensional surface of Steelcut Trio resembles small pyramids or steel points. Despite the complexity of the textile's innovative weave, it has a simple, precise expression. Steelcut Trio is yarn-dyed and made from 3 differently coloured yarns.

Composition: 90% new wool (worsted), 10% nylon

Width: Approx 140cm

Weight: 770 g/m

Durability: 100,000 Martindale

Piling: 4

Sustainability: EU Ecolabel, Greenguard Gold, HPD, EPD





0946



0953



0966



0976



0983



0996

CAT 3 – Savanna | Kvadrat

Savanna and Medina are upholstery textiles, which combine different types of yarns and materials to offer distinctive depth and richness. Both have been created by acclaimed Danish designers, Aggebo & Henriksen.

The designers blended yarns with contrasting characters to give Savanna and Medina elegant, sophisticated and individual structures: both textiles fuse shiny yarns, matt yarns and bouclé yarns. As a result, they each feature a rich, irregular surface, which reveals an eye-catching play of details when seen from close up.

Composition: 34% polyester 31% new wool 26% polyacrylic 4% cotton 3% nylon 2% linen

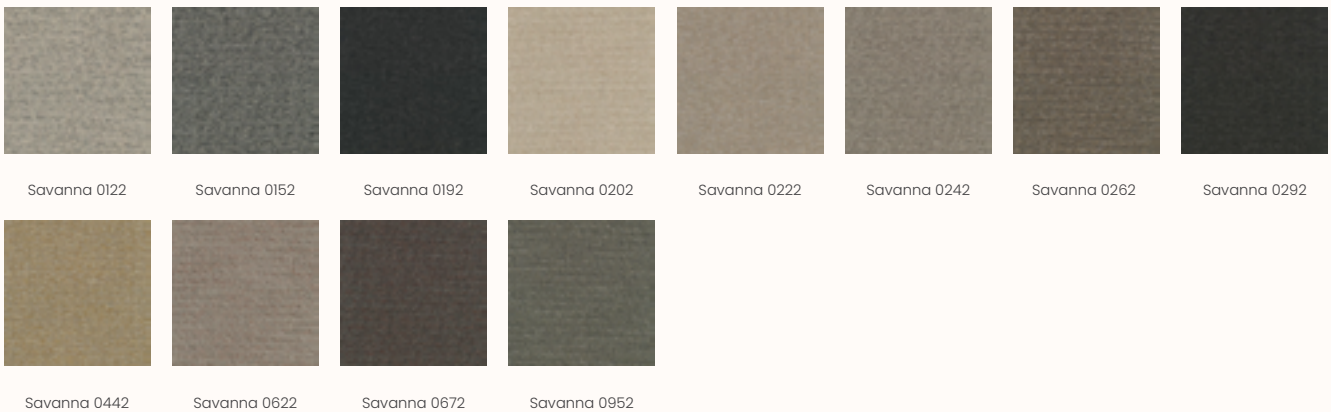
Width: Approx 140cm

Weight: 680 g/m

Durability: 45,000 Martindale

Piling: 3

Sustainability: Greenguard Gold certified, HPD



CAT 3 - Zero | Kvadrat

The influence of Parisian couture clothing can be seen in this elegant and irregular bouclé upholstery textile. The pearl effect yarn is used in both warp and weft giving a luxurious handle and a sophisticated appearance. The sixteen colourways range from tonal through to contrasting 'salt and pepper' combinations.

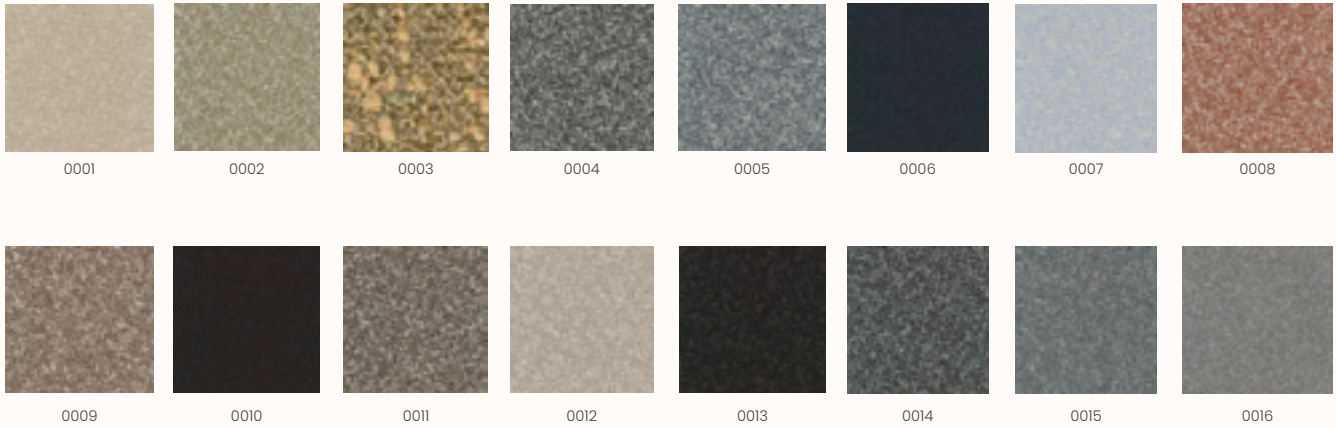
Composition: 65% cotton 20% polyacrylic 15% polyester

Width: 140 cm

Weight: 740 g/m

Durability: 70,000 Martindale

Piling: 5



CAT 3 - Alpaca | Mario Sirtori

Noble velvet composed of alpaca wool with a small percentage of polyamide which guarantees exceptional technical performance and resistance.

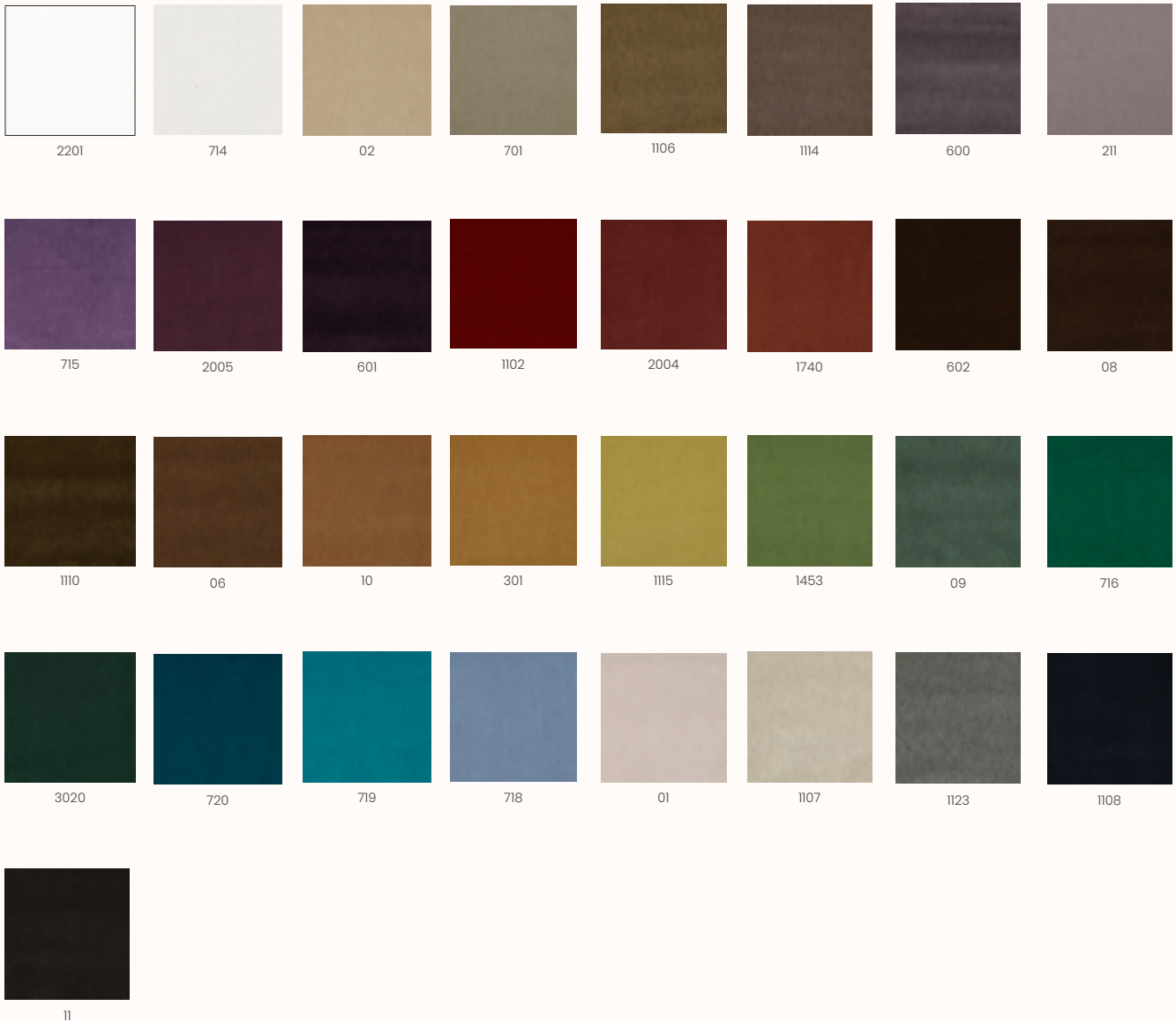
Composition: 39% cotton, 28% alpaca, 11% polyester, 9% virgin wool, 7% polyamide, 6% viscose

Width: 140 cm

Weight: 560 g/m

Durability: 110,000 Martindale

Piling: 5



CAT 4 - Moss | Kvadrat

The second design by Vincent van Duysen and Anna Vilhelmine Ebbesen is the distinctive upholstery fabric Moss. The mixture of twisted yarn and chenille gives the fabric surface a textured structure with an appearance of movement, and also creates a soft handle which adds a special dimension to the furniture it covers. The twenty-two colourways are either one- or two-tone combinations inspired by Vincent van Duysen's own home and range from cool cement and soft blue to oily green, curry yellow and the shades of natural wood.

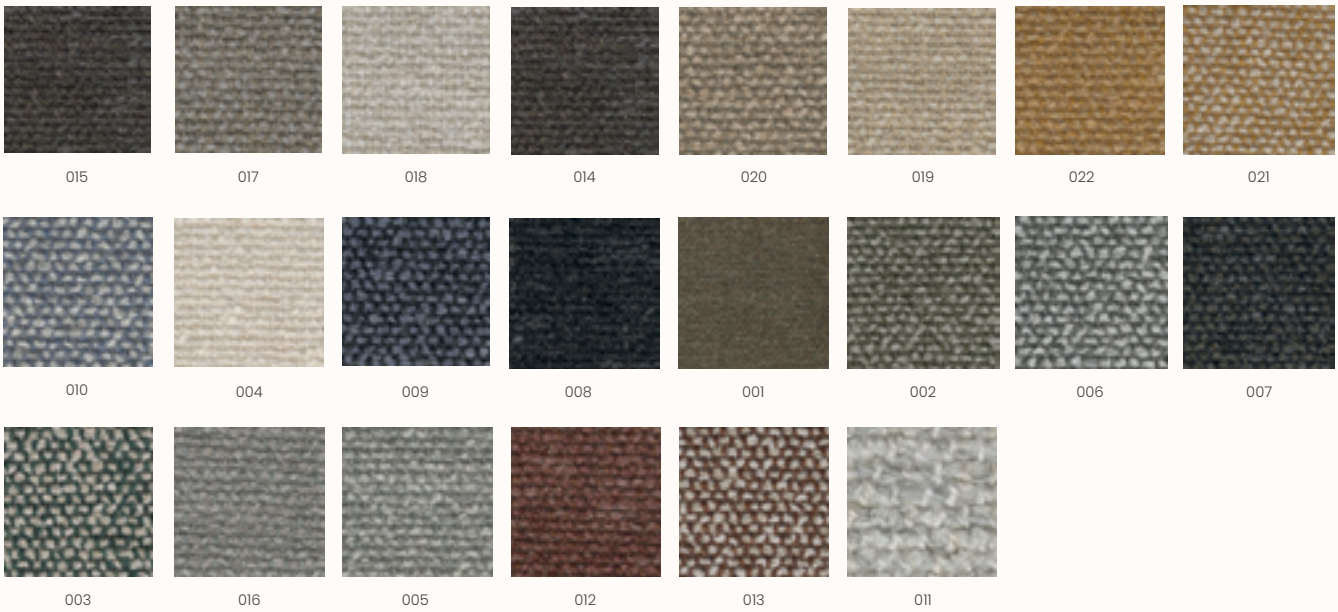
Composition: 52% cotton 22% viscose 14% polyacrylic 6% linen 3% nylon 3% polyester

Width: 138 cm

Weight: 918 g/lin. m

Durability: 50,000 Martindale

Piling: 4-5



CAT 4 – Safire | Kvadrat

Safire's coarse surface structure gives a subtle handwoven appearance that is both unique and dynamic, adding a special and unique dimension to this upholstery fabric. The thick boucle and chenille yarns contribute to its woolly handle and soft appeal but also gives a vibrant two-tone effect. The colour palette includes both quiet natural shades and strong, bold combinations.

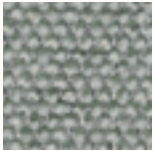
Composition: 43% viscose 17% polyacrylic 15% new wool 9% cotton 8% polyester 8% linen

Width: 140 cm

Weight: 1,010 g/lin. m

Durability: 44,000 Martindale

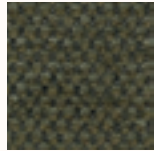
Piling: 3



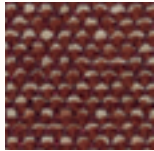
006



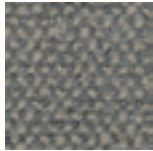
014



005



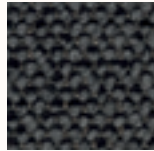
013



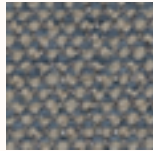
008



011



009



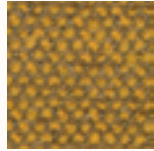
012



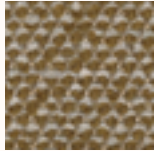
010



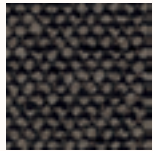
007



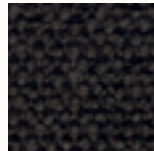
017



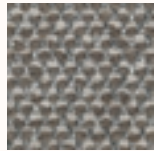
016



003



002



004



001



015

CAT 4 - Baru | Kvadrat

An ultra-soft woven woollen bouclé, Baru feels like shorn fleece and has a comforting volume created by the elasticity of the wool fibre and the finishing processes. Yarn dyed with one colour in warp and another in weft, it has the benefits of a woollen textile but a softer feel. The texture of the bouclé coupled with a slight shine from the acrylic blend creates a playful effect as the colour catches the light. Minimal contrasts in the yarns produce strong hues such as midnight, forest green, maroon and dark chocolate, while a darker base adds depth. Softer shades of snow, light grey, ash, camel, vanilla and moss green have a mélange effect from the contrasting base.

Composition: 87% wool 10% polyester 3% polyamide

Width: 140 cm

Weight: 770 g/lin. m

Durability: 65,000 Martindale

Piling: 5



CAT 4 - Sisu | Kvadrat

The expression of Sisu is reminiscent of looking at Hallingdal through a magnifying glass. The textile is woven with thick, voluminous woollen yarns and features a bold yet subtle, checked pattern. Blocks of color play across its surface, rising to tactile, rhythmic effect.

Composition: 91% new Norwegian wool, 8% new New Zealand wool, 1% nylon

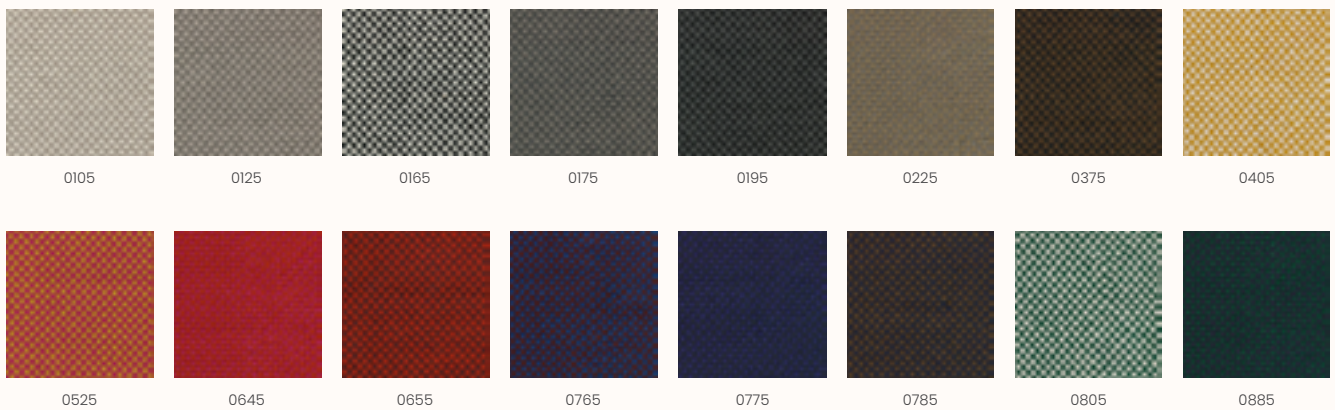
Width: 142 cm

Weight: 1,070 g/m

Durability: 70,000 Martindale

Piling: 3-4

Sustainability: Greenguard Gold certified, HPD, EPD



CAT 4 - Doré | Yarn Collective

Doré is our jacquard weave fabric woven with bouclé yarn. This textile has a soft touch and deep texture with a handwoven look. Featuring a unique flame pattern that creates the appearance of movement

Composition: 52% wool, 21% recycled cotton, 15% viscose, 12% linen

Width: 140 cm

Weight: 860 g/m

Durability: 70,000 Martindale



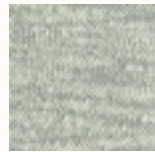
Jasmine



Quartz



Chai



Cirrus



Monochrome



Lagoon



Adriatic



One Minute
Past Midnight



Himalayan Salt



Lychee



Olive

CAT 4 - Ismay | Yarn Collective

Ismay is our hardwearing, textured wool bouclé. Made with a recycled cotton and wool blend that offers a unique texture. Natural lanolin acts as a stain barrier, allowing the Textile to stay fresh for longer.

Composition: 52% wool, 21% recycled cotton, 15% viscose, 12% linen

Width: 140 cm

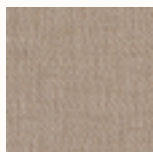
Weight: 860 g/m

Durability: 70,000 Martindale

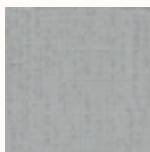


Outdoor – Savane | Scandilock

Composition: 100% Acrylic



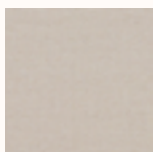
Coconut



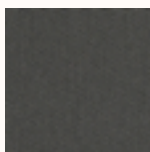
Whisper

Outdoor – Natte | Scandilock

Composition: 100% Acrylic



Linen Chalk



Dark Taupe

Outdoor – Leisure | Sørensen Leather

LEISURE® is an advanced protected leather for indoor and outdoor use. The leather features a multi-layered micro-finish, enhancing its resilience against all kinds of leisure-related elements – such as pool and salt water, sunlight, sunscreen, and general wear and tear.

While the surface boasts durability, the look and feel are that of natural aniline leather. LEISURE® has been meticulous hand-sanded to achieve a smooth and matte surface. Every hide is unique, and as a product of nature, the leather's natural markings tell stories of its true origin, boasting an incredibly rich, two-tone look.

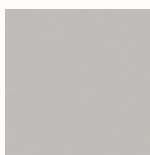
Type: Protected leather

Hide Size: 4.5-5.5 sqm

Thickness: 1.0-1.2 mm



Fyn, Mustard
42508



Gotland, Limestone
42504



Aegina, Olive
42507



Raabjerg Mile, Sand
42502



Ploumanach, Nude
42510



Amiata, Rust
42505



Etna, Black
42513



Lappi, Birch
42501



Marés, Sandstone
42503



Valletta, Camel
42500



Bardenas, Bronze
42512



Trillemarka, Dark Brown
42509



Alentejo, Cork
42506



Eolie, Dark Grey
42511

Leather Category I - Ultra | Sørensen

One of the most versatile Protected leathers around, ULTRA is the perfect everyday type of leather. Buffed and embossed and truly nice to touch, the surface features a uniform grain pattern over the entire hide which gives it a consistent look. ULTRA has some additional amazing attributes. Thanks to its extremely strong protective finish, it's very easy to maintain. Stains don't even leave a mark once wiped away using a fresh cloth with water. What's more, as a leather with a heavy surface protection, ULTRA will take longer to show signs of aging or fading due to exposure to light.

Our ULTRA collection has passed a special testing of TVOC (Total Volatile Organic Compounds). Called ANSI/BIFMA M7.1-2011 (R2016), it measures emissions and other factors as to their effect on air quality. A TVOC certificate guarantees that no harmful emissions are released into the environment, thus contributing to a healthy indoor atmosphere.

Type: Protected leather

Hide Size: 3.5 - 4.5 sqm

Thickness: 0.9-1.1mm

Curated colours:



Ultra Black
41599

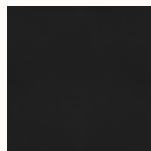
Non-curated colours available upon request, please contact your nearest showroom for cost:



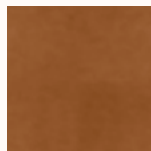
Altweiss
41576



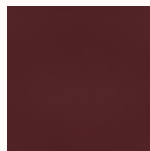
Anthrazite
41580



Black
41590



Brandy
41574



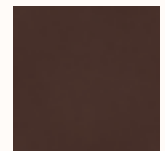
Brick
41579



Camel
41571



Chocolate
41589



Cognac
41598



Earth
41584



Eggshell
41581



Grey
41585



Honey
41573



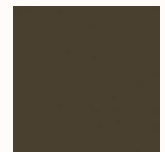
Lava
41575



Leaf
41566



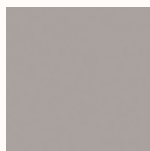
Marsh
41570



Moss
41569



Navy
41573



Oat
41588



Poppy
41578



Safari
41586



Smoke
41567



White
41594

Leather Category I - Ultra Crib5 | Sørensen

ULTRA CRIB5 is a versatile Protected leather in a select variety of colours designed to meet specific requirements concerning flammability. It's been fire-tested to fulfil stringent requirements that include Crib5 – the British Standards within flammability.

It has a uniform grain structure spanning over the entire hide, giving ULTRA CRIB5 a consistent look. Buffed and embossed, and truly nice to touch.

ULTRA CRIB5 is water repellent, stain resistant and easy to maintain, due to its extremely strong protective finish. As a result, it will take longer to show signs of aging or fading due to wear and tear or exposure to light.

Type: Protected leather

Hide Size: 3.5 - 4.5 sqm

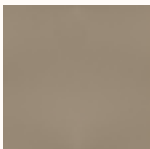
Thickness: 0.9-1.1mm

Curated colours:



Ultra Black
41599

Non-curated colours available upon request, please contact your nearest showroom for cost:



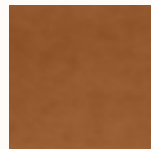
Ultra Crib5 Altweiss
41610



Ultra Crib5 Anthrazite
41615



Ultra Crib5 Black
41616



Ultra Crib5 Brandy
41612



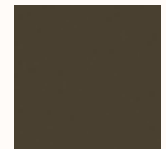
Ultra Crib5 Camel
41611



Ultra Crib5 Chocolate
41614



Ultra Crib5 Cognac
41613



Ultra Crib5 Moss
41617

Leather Category II - Matara (Faux) | Designers Guild

A smart, sophisticated faux leather with a naturalistic grain, soft hand, subtle sheen and a suede effect backing. Incredibly hard wearing, can be treated to most FR and IMO standards. In 54 colours, is eminently suitable for both contract and domestic usage.

Composition: 70% PVC, 22% PI, 8% Pu

Width: 137cm

Weight: 730gsm

Martindale: 100.000



Leather Category II - Nuance | Sørensen

Nuance has a remarkable depth and dimension that exudes authenticity, with the added advantage that it's designed to be durable. It's a new type of protected leather developed in collaboration with Space Copenhagen, where the nuances are seen in the natural texture as well as the tones. The natural patterns and imperfections are visible, reflecting the innate beauty of each hide.

Composition: 100% Protected Leather

Curated colours:

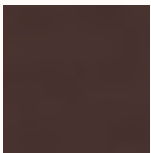


NUANCE
BURNED GREY
40783



NUANCE WALNUT
40790

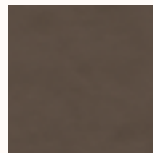
Non-curated colours available upon request, please contact your nearest showroom for cost:



NUANCE
BURGUNDY
40789



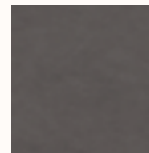
NUANCE
CINNAMON
40788



NUANCE DARK
BROWN
40791



NUANCE DARK
GREEN
40787



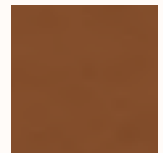
NUANCE
EARTHY GREY
40784



NUANCE
HEAVENLY GREY
40781



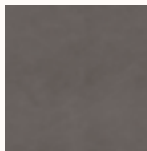
NUANCE LIGHT
GREY
40782



NUANCE RUST
40786



NUANCE
SHADOW GREY
40780



NUANCE
SMOKED GREY
40785

Leather Category II - Flux | Sørensen

Flux is a type of protected leather that resembles nubuck, with a matt look akin to neoprene. It's an innovative leather developed in collaboration with architect and designer David Thulstrup, featuring a velvety-soft surface with a muted effect that's ultra modern. In addition to all the advantages of protection, involving a very fine surface coating that's unperceivable to the eye, which renders Flux resistant to scuffing and fading.

Composition: 100% Protected Leather

Curated colours:



FLUX LIGHT
BROWN
40305



FLUX
ANTHRAZITE
40302

Non-curated colours available upon request, please contact your nearest showroom for cost:



FLUX BROWN
40307



NUANCE DARK
BROWN
40791



NUANCE DARK
GREEN
40787



NUANCE
EARTHY GREY
40784



NUANCE
HEAVENLY GREY
40781



NUANCE LIGHT
GREY
40782



NUANCE RUST
40786



NUANCE
SHADOW GREY
40780



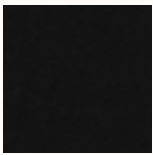
NUANCE
SMOKED GREY
40785

Leather Category II - Envy | Sørensen

Envy is an accessible leather with an aura of elegance. Smooth to the touch with a slight sheen to the surface, it's a captivating leather that awakens the senses. Look closer and you can see very subtle natural markings, which are minimised via a special sanding process. Add to that a light, transparent wax that helps protect the surface and the result is a lovely feel with a brilliant sense of depth.

Composition: 100% Aniline Leather

Curated colours:



ENVY BLACK
20321

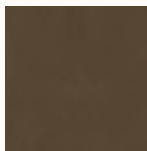


ENVY OLIVE
20324

Non-curated colours available upon request, please contact your nearest showroom for cost:



ENVY ANTHRAZITE
20323



ENVY NOUGAT
20322



ENVY COGNAC
20320

Leather Category III - Dunes | Sørensen

DUNES® is an exclusive Aniline leather with a natural, rustic look and a sublime, almost velvety tactile feel. Achieved via a process of sanding and applying a special type of leather oil to the surface. At the same time, DUNES® boasts a matt look that's raw with a touch of understated elegance. Part of DUNES®' extra appeal are the natural markings which bring a unique personality to each hide. Colour tones will also vary from hide to hide and within each individual hide. Watch for a beautiful patina that will appear over time as a result of the leather's usage, exposure to daylight and interior lighting. With use, the leather will become shinier and smoother over time.

DUNES® collection has received the Nordic Swan Ecolabel. A highly-respected certification verifying that it meets their rigorous requirements regarding the environment, use of energy and resources. Additionally, as a result of meeting a separate set of criteria, DUNES® can be specified as one of the components as part of the certification process for a design to be awarded the EU Ecolabel (EU Blomst in Danish).

Type: Aniline leather

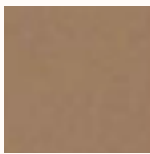
Hide Size: 4.5 - 5.5 sqm

Thickness: 1.1-1.3mm

Curated colours:



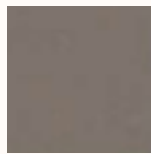
Anthrazite
21003



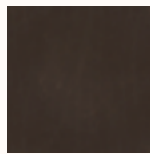
Ecrú
21008



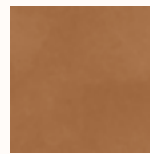
Almond
21009



Stone
21010



Dark Brown
21001

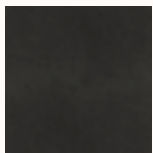


Camel
21004



Cognac
21000

Non-curated colours available upon request, please contact your nearest showroom for cost:



Grey
21007



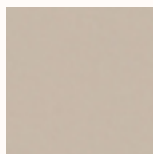
Racing Green
21005

Leather Category III - Terra | Sørensen

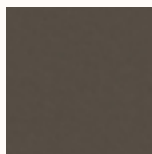
Terra is a new type of innovative high-end leather developed in collaboration with Norm Architects, known for their thoughtful design philosophy that seeks to engage the senses and enrich the quality of life. It's an extremely soft aniline leather featuring a silky-matt surface with a subtle shine and a velvety tactile feel that evokes one's senses, offering a touch of modern sophisticated elegance.

Composition: 100% Aniline Leather

Curated colours:



TERRA LIME
20365

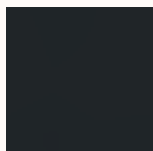


TERRA CLAY
20370



TERRA SOIL
20360

Non-curated colours available upon request, please contact your nearest showroom for cost:



TERRA BASALT
20369



TERRA JADE
20368



TERRA MARBLE
20466



TERRA OCHRE
20363



TERRA OXIDE
20362



TERRA RAKU
20367



TERRA SAND
20364



TERRA SILT
20371



TERRA UMBER
20361

Leather Category III – Spectrum | Sørensen

SPECTRUM/NOIR is a soft Semi-aniline leather with a subtle texture that looks uniform, thanks to a light surface finish that helps protect the leather from dirt, stains and fading resulting from exposure to light. As a natural, full-grain leather, the visible pores on the smooth surface add a unique, authentic character to a matt leather with a subtle shine.

Our SPECTRUM/NOIR collection has received the LEATHER STANDARD by OEKO-TEX® certification. A scientifically-founded, world-wide testing and certification system for leather. Based on international test standards and other recognised test processes, the certification involves around 100 test parameters. Including numerous environmentally-relevant substances and chemicals harmful to the health. The more intensively an article comes into contact with the skin, the stricter the human-ecological requirements that it must fulfil.

Type: Semi-aniline leather

Hide Size: 5.0 – 6.0 sqm

Thickness: 1.0-1.2mm

Curated colours:



Mineral
30160

Non-curated colours available upon request, please contact your nearest showroom for cost:



Adria
30137



Agave
30098



Almond
30150



Anthrazite
30134



Apricot
30122



Autumn
30099



Bark
30148



Black
30114



Blackberry
30115



Bottle Green
30083



Brandy
30155



Brick
30119



Brown
30087



Burn
30092



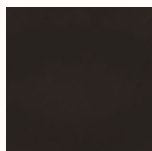
Burned Orange
30173



Cactus
30081



Camel
30106



Chocolate
30113



Cinnamon
30146



Cloud
30079



Coffee
30112



Cognac
30107



Concrete
30082



Coral
30118



Corn
30103



Cream
30101



Dark Blue
30085



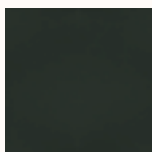
Dark Grey
30162



Earth
30149



Eggshell
30100



Forest
30127



Ginger
30096



Leather Category IV - Sheepskin | Scandilock

Scandilock Curly 17mm is developed for furniture upholstery but can also be used for different furnishing assignments. The wool has a curly texture and is high in density which makes it durable and soft. Curly 17mm comes in three color collections. In the Classic Collection, the wool has been dyed with highlighted tips and darker base which gives the overall appearance a beautiful marbled finish. In the Standard Collection the wool is dyed in one color tone which gives an even end result that enhances the curly texture of the wool. Limited Collection are colors that varies in stock and therefore the lead times can be longer when ordered in larger quantities.

Original Raw Material: SAustralia crossbred, lamb/sheep

Wool Length: 17mm

Leather Thickness: 1-3mm

Classic Collection



Sahara
07



Charcoal
14



Espresso
15

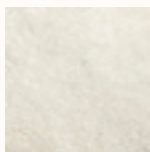


Scandinavian Grey
22

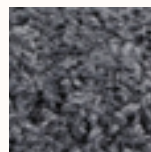
Standard Collection



Black
01



Off White
02



Anthracite
04

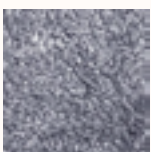


Honey
08



Moonlight
09

Limited Collection



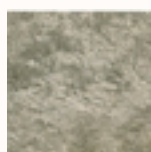
Graphite
03



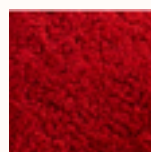
Mocha
05



Mushroom
06



Green Tea
10



Ruby
11



Maple
18