

NORR11

Fabric/Leather Specification



CONTENTS:

Fabric

Upholstery Category 0 [2](#)

Grain, Cura, Chili, Step Melange, Megan

Upholstery Category 1 [8](#)

Mumble, Remix, Fame

Upholstery Category 2 [13](#)

Barnum, Breeze Fusion, Canvas, Keiga

Upholstery Category 3 [17](#)

Fiord, Hallingdal, Steelcut Trio, Savanna, Zero
Alpaca

Upholstery Category 4 [25](#)

Moss, Safire, Baru, Sisu, Doré, Ismay

Outdoor

Outdoor Upholstery [31](#)

Savane, Natte, Leisure

Leather

Leather Category I [32](#)

Ultra, Ultra Crib 5, Matara (Faux)

Leather Category II [35](#)

Nuance, Flux, Envy

Leather Category III [38](#)

Dunes, Terra, Spectrum

Leather Category IV [42](#)

Sheepskin

CAT 0 - Grain | Gabriel

Composition: Single-coloured: 92% Post-Consumer Polyester, 8% Polyester

Two-coloured: 80% Post-Consumer Polyester, 20% Polyester

Durability: 100.000 Martindale



CAT 0 - Cura | Gabriel

Composition: 98% post-consumer recycled polyester, 2% polyester

Durability: 100.000 Martindale



CAT 0 - Chili | Gabriel

Composition: 100% post-consumer recycled polyester fr (frinside the fiber)

Durability: 60.000 Martindale



CAT 0 - Step Melange | Gabriel

Composition: 100% Trevira cs

Durability: 100.000 Martindale

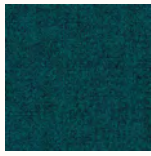




Step Melange
66265



Step Melange
67004



Step Melange
67007



Step Melange
67072



Step Melange
67135



Step Melange
68118



Step Melange
68119



Step Melange
68120



Step Melange
68121



Step Melange
68158



Step Melange
68159



Step Melange
68161



Step Melange
68162



Step Melange
68163



Step Melange
68165



Step Melange
68298



Step Melange
68299



Step Melange
68300



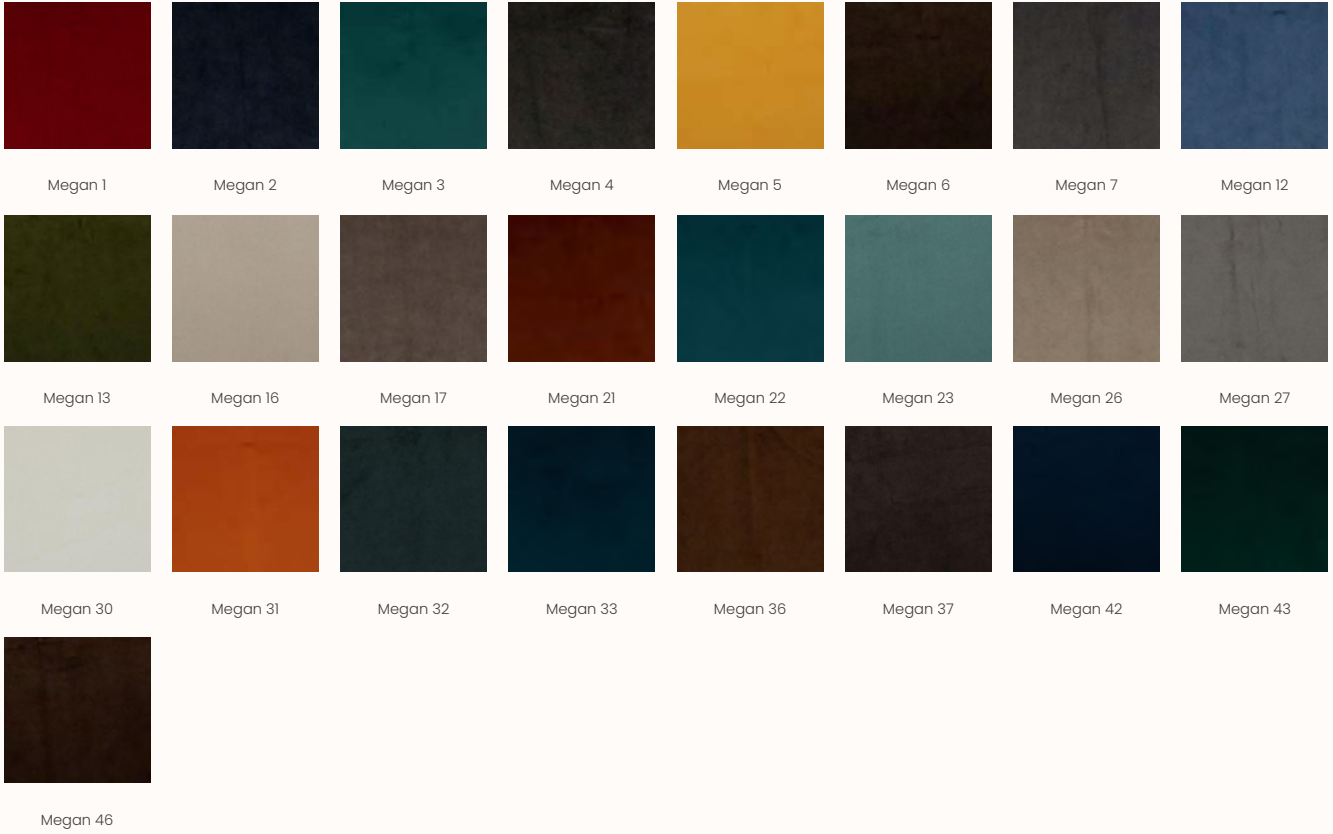
Step Melange
68301

CAT 0 - Megan | Glamour

Megan is a velvet in a sparkling color scheme. High, straight standing piles in a durable quality for all types of environments.

Composition: 100% Polyester

Durability: 170.000 Martindale



CAT 1 - Mumble Glamour

Composition: 100% post-consumer recycled polyester fr (frinside the fiber)

Durability: 60.000 Martindale



Mumble 001



Mumble 002



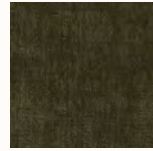
Mumble 003



Mumble 004



Mumble 005



Mumble 006



Mumble 007



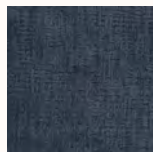
Mumble 008



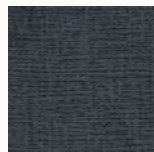
Mumble 009



Mumble 010



Mumble 011



Mumble 012



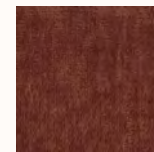
Mumble 013



Mumble 014



Mumble 015



Mumble 016



Mumble 018



Mumble 019



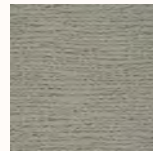
Mumble 020



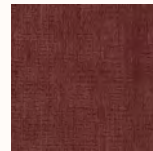
Mumble 021



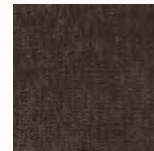
Mumble 022



Mumble 023



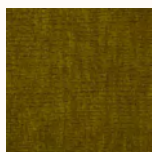
Mumble 024



Mumble 025



Mumble 026



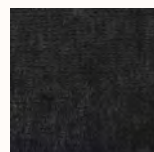
Mumble 027



Mumble 028



Mumble 030



Mumble 032

CAT 1 - Remix | Kvadrat

Remix 2 looks uni-coloured from a distance but reveals subtle details and colour contrasts when viewed close-up. The textile features a tight, minimalistic weave, and derives its lively colour play from a combination of two different mélange yarns, which each combine up to three hues.

The new colours – carefully selected from 2600 samples– are inspired by an extensive study of traditional Indigo dyeing undertaken by Giulio Ridolfo on his travels. Centred around deep combinations of blues and rich natural reds, they also include subtly coloured neutrals.

Composition: 90% new wool (worsted), 10% nylon

Width: Approx 140cm

Weight: 420 g/m

Durability: 100,000 Martindale

Piling: 4

Sustainability: EU ecolabel "The Flower", Greenguard Gold certified, HPD, EPD





CAT 1 - Fame | Gabriel

Fame is a unique woollen upholstery fabric with a wearability of 200,000 Martindale, and at the same time is extra soft and stretchable. The colour scale is very elegant and vibrant.

Composition: 95% New Zealand wool, 5% polyamide

Width: Approx 140cm

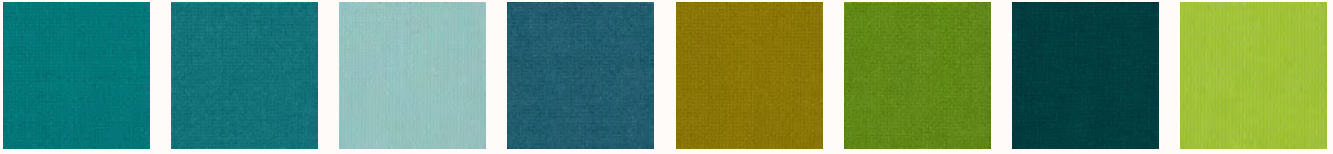
Weight: 630 g/m

Durability: 200,000 Martindale

Piling: 4

Sustainability: Standard 100 by OEKO-TEX, EU Ecolabel





67016

67067

67068

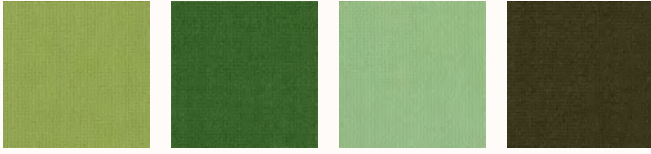
67069

68004

68035

68143

68144



68145

68146

68147

68148

CAT 2 - Barnum Bouclé | Glamour

Barnum Bouclé is a textured bouclé wool with a comfortable soft feel and is available in a various attractive colors. The fabric is durable and heavy enough to offer some acoustic absorption but soft enough to provide warmth and comfort.

Composition: 45% Cotton, 19% Viscose, 15% Wool, 13% Acetate, 8% Nylon

Width: 140cm

Weight: 950 g

Durability: 60.000 Martindale

Piling: 4



CAT 2 - Breeze Fusion | Gabriel

Breeze Fusion is a richly textured, woollen upholstery fabric brought to life by intriguing colour blends. It offers superior durability, inherent fire resistance and a strong environmental profile.

Composition: 88% New Zealand wool / 12% polyamide

Width: 140 cm

Weight: 590 g/lin. m

Durability: 100,000 Martindale

Piling: 4-5



CAT 2 - Canvas | Kvadrat

Canvas is a vibrant woollen upholstery textile created by Giulio Ridolfo. Particularly well-suited to large surfaces thanks to its pronounced structure, it features a soft weave and an expanded palette inspired by the landscapes of Skagen, Denmark.

The melange yarn used to craft Canvas combines three colours, with six hues in every colour way. Consequently, the textile offers exceptional colour richness and an intriguing expression. From a distance, it has the calm surface of a uni-coloured textile. But, get closer, and shimmering colour nuances, delicate contrasts and an elegant structure emerge.

Composition: 90% new wool (worsted), 10% nylon

Width: Approx 140cm

Weight: 480 g/m

Durability: 100,000 Martindale

Piling: 4

Sustainability: EU ecolabel "The Flower", Greenguard Gold certified, HPD, EPD



CAT 2 - Keiga | Sahco

Rich in nuance like a Nordic landscape and suitable for any furnishing style. Keiga is a foundational fabric that works with everything, vintage or modern, angular or organic, art deco or light toned Scandi. Matt wool grounds the rich structure, enlivened by the contrast from the shiny yarns.

Composition: 38% new wool, 37% viscose, 16% linen, 9% nylon

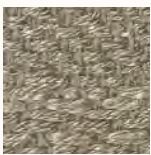
Width: Approx 140cm

Weight: 740 g/m

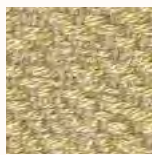
Durability: 50,000 Martindale

Piling: 3-4

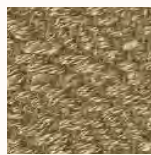
Sustainability: Greenguard Gold certified, HPD



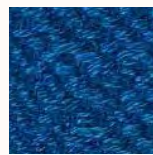
242



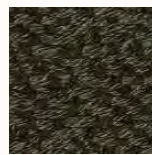
422



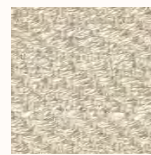
252



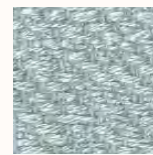
762



982



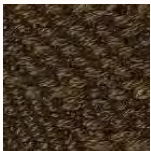
222



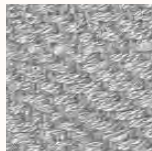
822



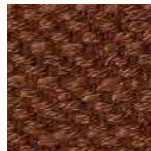
112



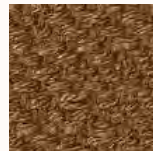
382



132



572



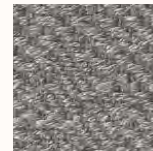
362



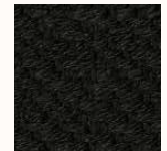
232



622



142



192



182

CAT 3 - Fiord | Kvadrat

Fiord is a versatile woollen upholstery textile with a subtle three-dimensional look. Originally designed by Norwegian designer Tone Barnung, it comes in refreshed colours created in collaboration with Louise Sigvardt.

The construction of Fiord combines a mélangé yarn with a uni-coloured yarn that creates pearl-like dots that play across the textile's surface. This sophisticated expression reflects a key source of inspiration behind the design: moonlight glittering like pearls on the rippling waters of a Norwegian fjord.

Composition: 92% new wool (worsted), 8% nylon

Width: Approx 140cm

Weight: 493 g/m

Durability: 60,000 Martindale

Piling: 4-5

Sustainability: EU Ecolabel, Greenguard Gold, HPD, EPD



CAT 3 - Hallingdal | Kvadrat

Kvadrat's first textile 'Hallingdal' has become the archetype of woollen textiles. The very durable upholstery fabric was originally designed in 1965 by Nanna Ditzel, and is now available in a version with an updated colour scale: Hallingdal 65.

Hallingdal 65 is made of wool and viscose, which complement each other well: the wool provides excellent durability and flexibility, whilst the viscose adds brilliance and depth to the colour. Both materials are dyed before they are spun, which highlights the rich texture of the fabric.

Composition: 70% new wool, 30% viscose

Width: Approx 130cm

Weight: 795 g/m

Durability: 100,000 Martindale

Piling: 3-4

Sustainability: EU Ecolabel, Greenguard Gold, HPD, EPD





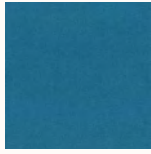
0773



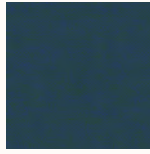
0810



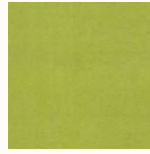
0840



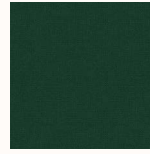
0850



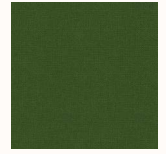
0890



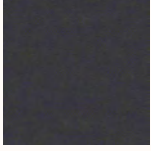
0907



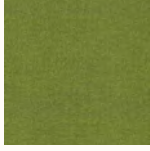
0944



0960



0968



0980

CAT 3 - Steelcut Trio | Kvadrat

Steelcut Trio is a hardwearing woollen upholstery textile with the same construction as Steelcut. Originally designed by Frans Dijkmeijer, it comes in updated colourways crafted by Giulio Ridolfo.

The three-dimensional surface of Steelcut Trio resembles small pyramids or steel points. Despite the complexity of the textile's innovative weave, it has a simple, precise expression. Steelcut Trio is yarn-dyed and made from 3 differently coloured yarns.

Composition: 90% new wool (worsted), 10% nylon

Width: Approx 140cm

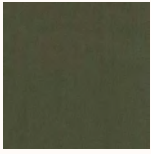
Weight: 770 g/m

Durability: 100,000 Martindale

Piling: 4

Sustainability: EU Ecolabel, Greenguard Gold, HPD, EPD

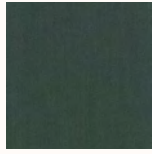




0946



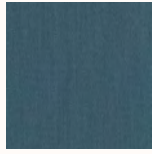
0953



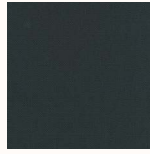
0966



0976



0983



0996

CAT 3 – Savanna | Kvadrat

Savanna and Medina are upholstery textiles, which combine different types of yarns and materials to offer distinctive depth and richness. Both have been created by acclaimed Danish designers, Aggebo & Henriksen.

The designers blended yarns with contrasting characters to give Savanna and Medina elegant, sophisticated and individual structures: both textiles fuse shiny yarns, matt yarns and bouclé yarns. As a result, they each feature a rich, irregular surface, which reveals an eye-catching play of details when seen from close up.

Composition: 34% polyester 31% new wool 26% polyacrylic 4% cotton 3% nylon 2% linen

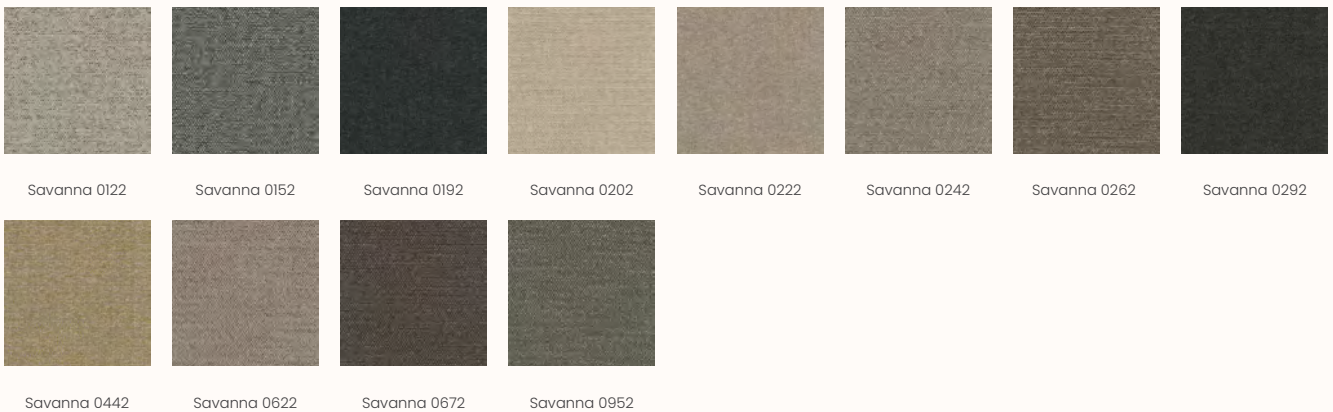
Width: Approx 140cm

Weight: 680 g/m

Durability: 45,000 Martindale

Piling: 3

Sustainability: Greenguard Gold certified, HPD



CAT 3 - Zero | Kvadrat

The influence of Parisian couture clothing can be seen in this elegant and irregular bouclé upholstery textile. The pearl effect yarn is used in both warp and weft giving a luxurious handle and a sophisticated appearance. The sixteen colourways range from tonal through to contrasting 'salt and pepper' combinations.

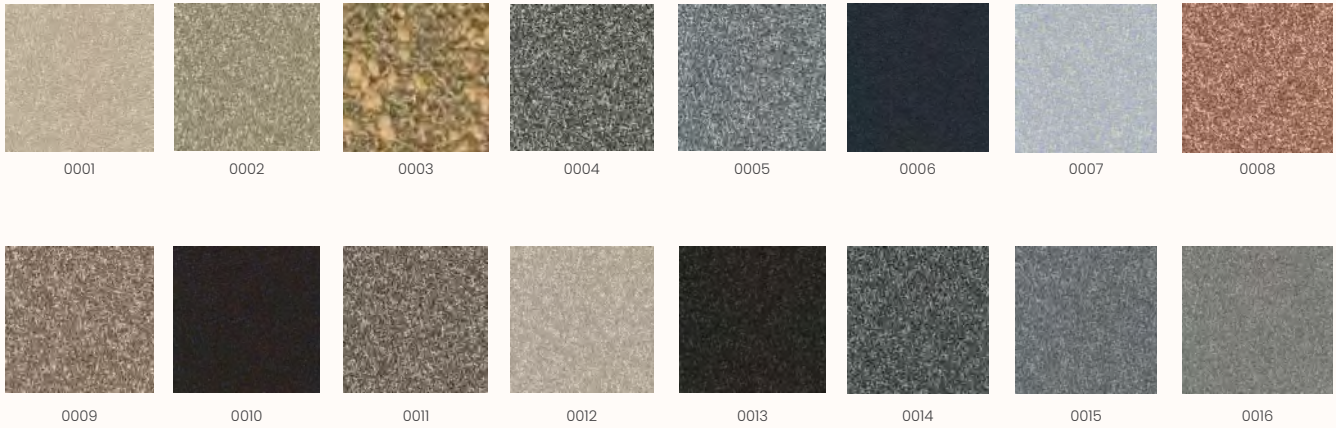
Composition: 65% cotton 20% polyacrylic 15% polyester

Width: 140 cm

Weight: 740 g/m

Durability: 70,000 Martindale

Piling: 5



CAT 3 - Alpaca | Mario Sirtori

Noble velvet composed of alpaca wool with a small percentage of polyamide which guarantees exceptional technical performance and resistance.

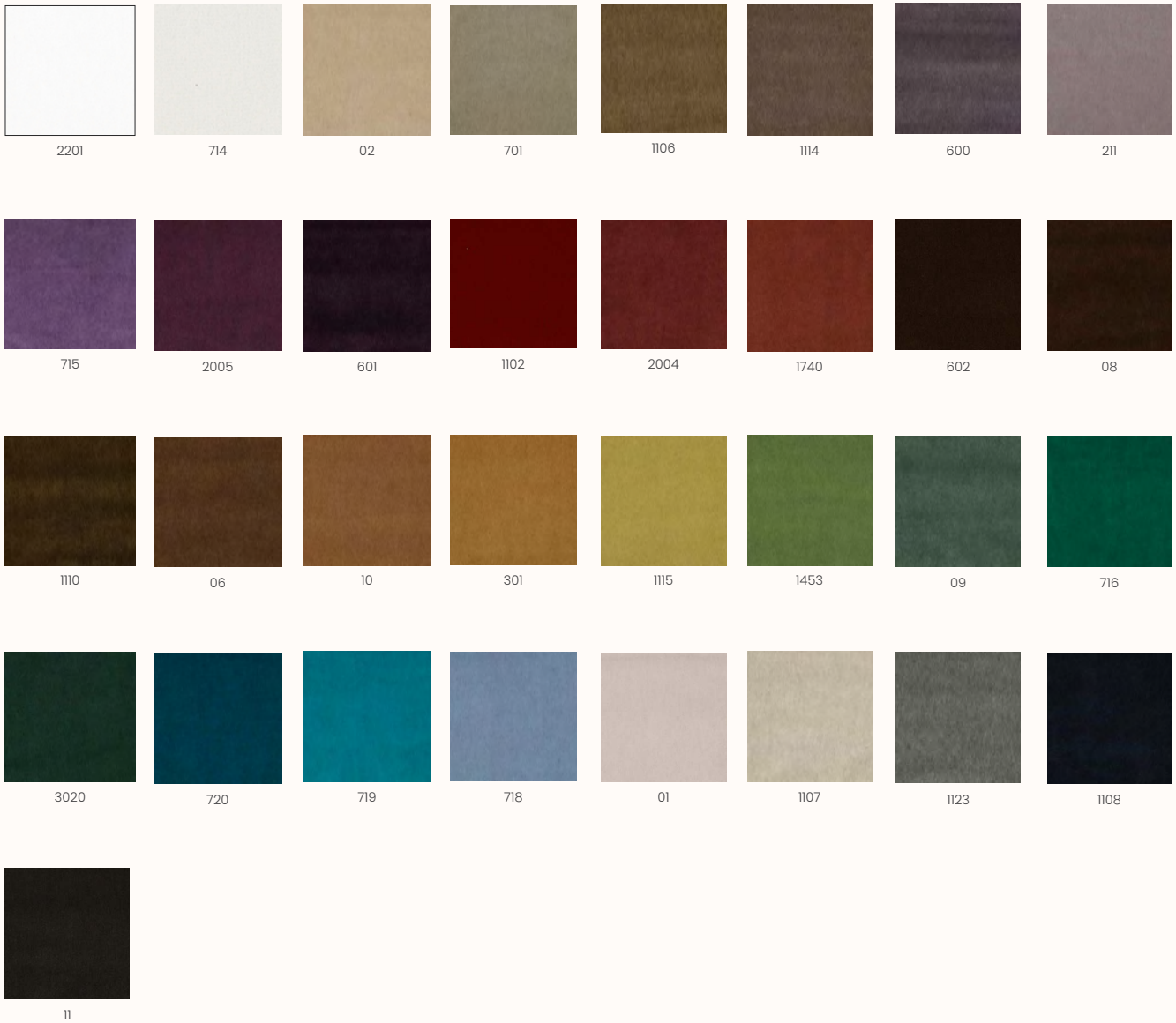
Composition: 39% cotton, 28% alpaca, 11% polyester, 9% virgin wool, 7% polyamide, 6% viscose

Width: 140 cm

Weight: 560 g/m

Durability: 110,000 Martindale

Piling: 5



CAT 4 - Moss | Kvadrat

The second design by Vincent van Duysen and Anna Vilhelmine Ebbesen is the distinctive upholstery fabric Moss. The mixture of twisted yarn and chenille gives the fabric surface a textured structure with an appearance of movement, and also creates a soft handle which adds a special dimension to the furniture it covers. The twenty-two colourways are either one- or two-tone combinations inspired by Vincent van Duysen's own home and range from cool cement and soft blue to oily green, curry yellow and the shades of natural wood.

Composition: 52% cotton 22% viscose 14% polyacrylic 6% linen 3% nylon 3% polyester

Width: 138 cm

Weight: 918 g/lin. m

Durability: 50,000 Martindale

Piling: 4-5



CAT 4 – Safire | Kvadrat

Safire's coarse surface structure gives a subtle handwoven appearance that is both unique and dynamic, adding a special and unique dimension to this upholstery fabric. The thick boucle and chenille yarns contribute to its wooly handle and soft appeal but also gives a vibrant two-tone effect. The colour palette includes both quiet natural shades and strong, bold combinations.

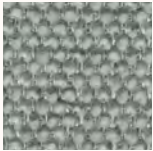
Composition: 43% viscose 17% polyacrylic 15% new wool 9% cotton 8% polyester 8% linen

Width: 140 cm

Weight: 1,010 g/lin. m

Durability: 44,000 Martindale

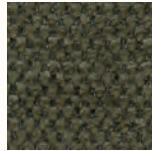
Piling: 3



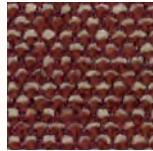
006



014



005



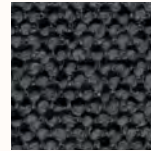
013



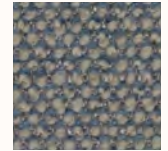
008



011



009



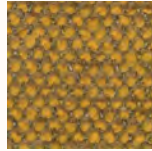
012



010



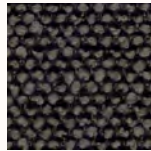
007



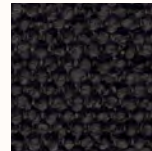
017



016



003



002



004



001



015

CAT 4 - Baru | Kvadrat

An ultra-soft woven woollen bouclé, Baru feels like shorn fleece and has a comforting volume created by the elasticity of the wool fibre and the finishing processes. Yarn dyed with one colour in warp and another in weft, it has the benefits of a woollen textile but a softer feel. The texture of the bouclé coupled with a slight shine from the acrylic blend creates a playful effect as the colour catches the light. Minimal contrasts in the yarns produce strong hues such as midnight, forest green, maroon and dark chocolate, while a darker base adds depth. Softer shades of snow, light grey, ash, camel, vanilla and moss green have a mélange effect from the contrasting base.

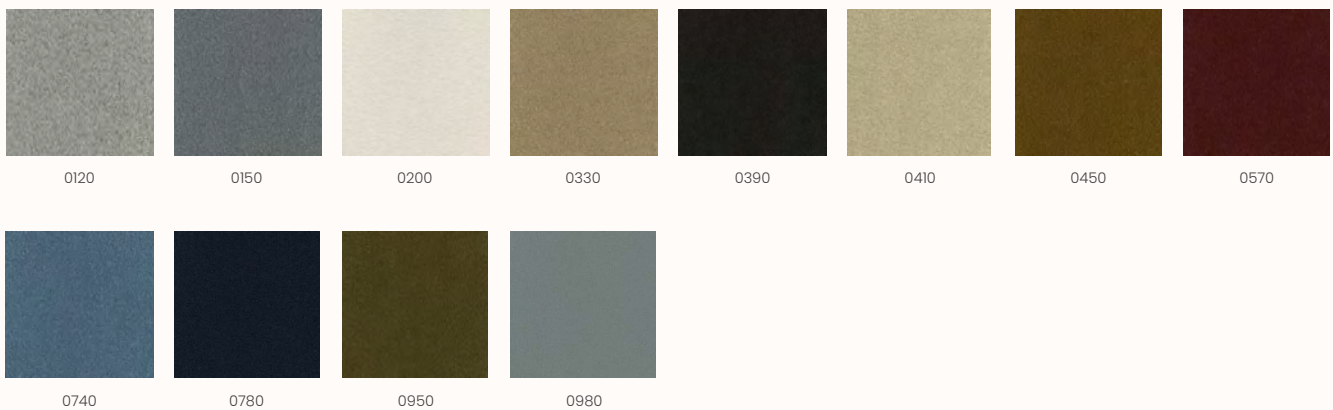
Composition: 87% wool 10% polyester 3% polyamide

Width: 140 cm

Weight: 770 g/lin. m

Durability: 65,000 Martindale

Piling: 5



CAT 4 - Sisu | Kvadrat

The expression of Sisu is reminiscent of looking at Hallingdal through a magnifying glass. The textile is woven with thick, voluminous woollen yarns and features a bold yet subtle, checked pattern. Blocks of color play across its surface, rising to tactile, rhythmic effect.

Composition: 91% new Norwegian wool, 8% new New Zealand wool, 1% nylon

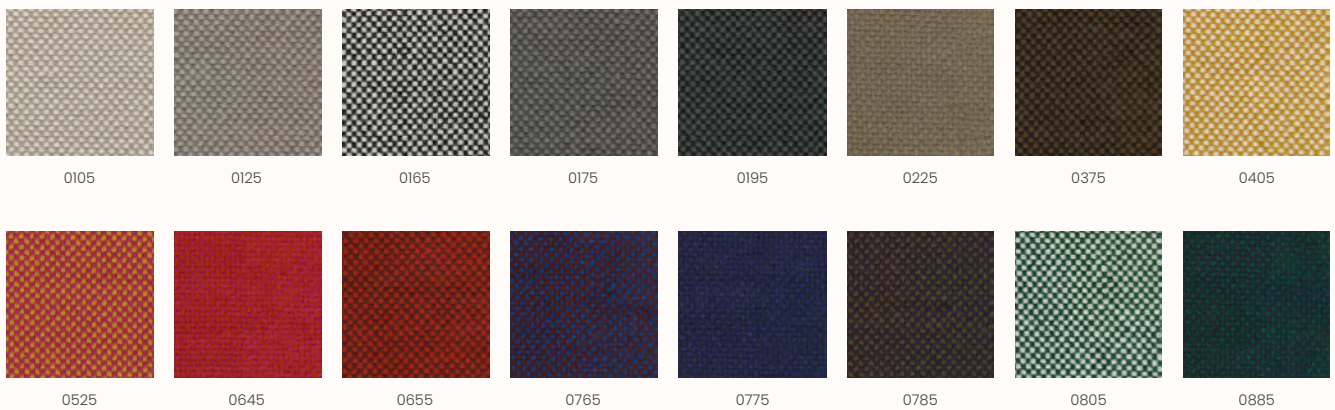
Width: 142 cm

Weight: 1,070 g/m

Durability: 70,000 Martindale

Piling: 3-4

Sustainability: Greenguard Gold certified, HPD, EPD



CAT 4 - Doré | Yarn Collective

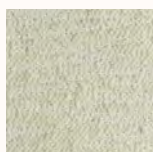
Doré is our jacquard weave fabric woven with bouclé yarn. This textile has a soft touch and deep texture with a handwoven look. Featuring a unique flame pattern that creates the appearance of movement

Composition: 52% wool, 21% recycled cotton, 15% viscose, 12% linen

Width: 140 cm

Weight: 860 g/m

Durability: 70,000 Martindale



Jasmine



Quartz



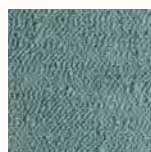
Chai



Cirrus



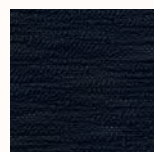
Monochrome



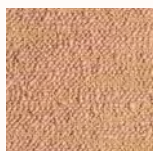
Lagoon



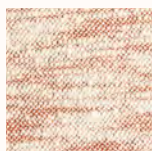
Adriatic



One Minute
Past Midnight



Himalayan Salt



Lychee



Olive

CAT 4 - Ismay | Yarn Collective

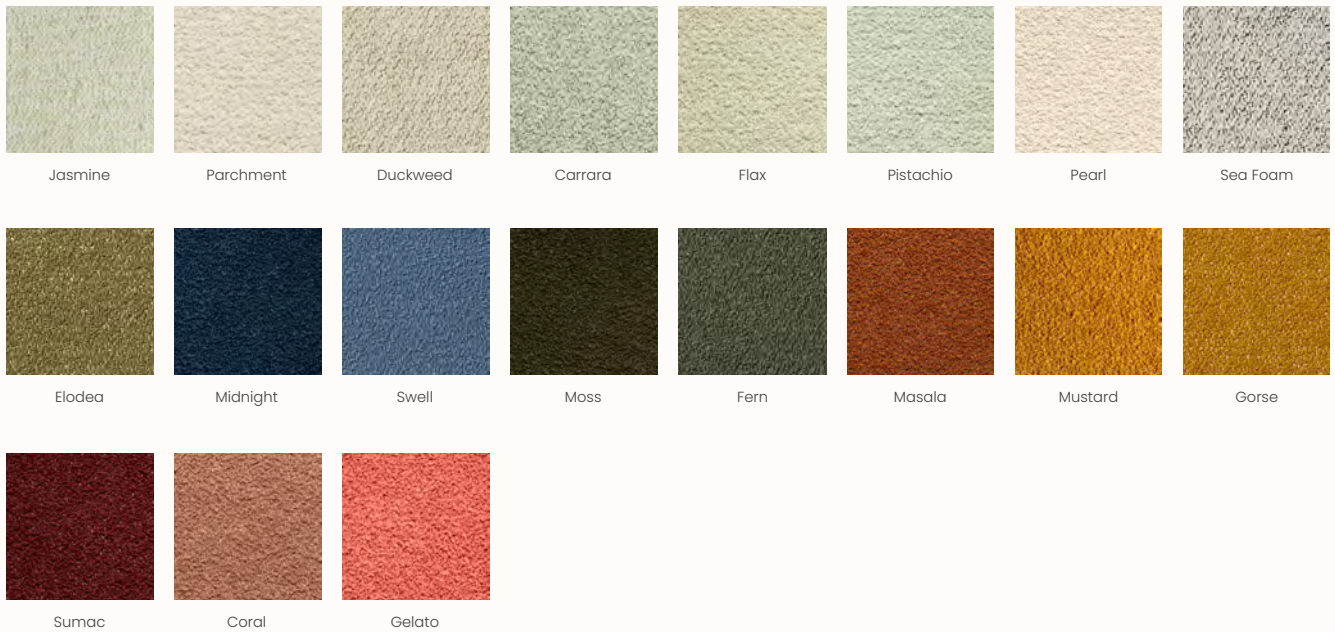
Ismay is our hardwearing, textured wool bouclé. Made with a recycled cotton and wool blend that offers a unique texture. Natural lanolin acts as a stain barrier, allowing the Textile to stay fresh for longer.

Composition: 52% wool, 21% recycled cotton, 15% viscose, 12% linen

Width: 140 cm

Weight: 860 g/m

Durability: 70,000 Martindale



Outdoor – Savane | Scandilock

Composition: 100% Acrylic



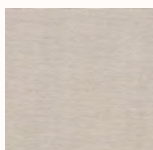
Coconut



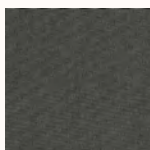
Whisper

Outdoor – Natte | Scandilock

Composition: 100% Acrylic



Linen Chalk



Dark Taupe

Outdoor – Leisure | Sørensen Leather

LEISURE® is an advanced protected leather for indoor and outdoor use. The leather features a multi-layered micro-finish, enhancing its resilience against all kinds of leisure-related elements – such as pool and salt water, sunlight, sunscreen, and general wear and tear.

While the surface boasts durability, the look and feel are that of natural aniline leather. LEISURE® has been meticulous hand-sanded to achieve a smooth and matte surface. Every hide is unique, and as a product of nature, the leather's natural markings tell stories of its true origin, boasting an incredibly rich, two-tone look.

Type: Protected leather

Hide Size: 4.5-5.5 sqm

Thickness: 1.0-1.2 mm



Fyn, Mustard
42508



Gotland, Limestone
42504



Aegina, Olive
42507



Raabjerg Mile, Sand
42502



Ploumanach, Nude
42510



Amiata, Rust
42505



Etna, Black
42513



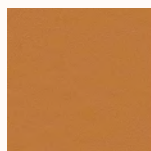
Lappi, Birch
42501



Marés, Sandstone
42503



Valletta, Camel
42500



Bardenas, Bronze
42512



Trillemarka, Dark Brown
42509



Alentejo, Cork
42506



Eolie, Dark Grey
42511

Leather Category I - Ultra | Sørensen

One of the most versatile Protected leathers around, ULTRA is the perfect everyday type of leather. Buffed and embossed and truly nice to touch, the surface features a uniform grain pattern over the entire hide which gives it a consistent look. ULTRA has some additional amazing attributes. Thanks to its extremely strong protective finish, it's very easy to maintain. Stains don't even leave a mark once wiped away using a fresh cloth with water. What's more, as a leather with a heavy surface protection, ULTRA will take longer to show signs of aging or fading due to exposure to light.

Our ULTRA collection has passed a special testing of TVOC (Total Volatile Organic Compounds). Called ANSI/BIFMA M7.1-2011 (R2016), it measures emissions and other factors as to their effect on air quality. A TVOC certificate guarantees that no harmful emissions are released into the environment, thus contributing to a healthy indoor atmosphere.

Type: Protected leather

Hide Size: 3.5 - 4.5 sqm

Thickness: 0.9-1.1mm



Leather Category I - Ultra Crib5 | Sørensen

ULTRA CRIB5 is a versatile Protected leather in a select variety of colours designed to meet specific requirements concerning flammability. It's been fire-tested to fulfil stringent requirements that include Crib5 – the British Standards within flammability.

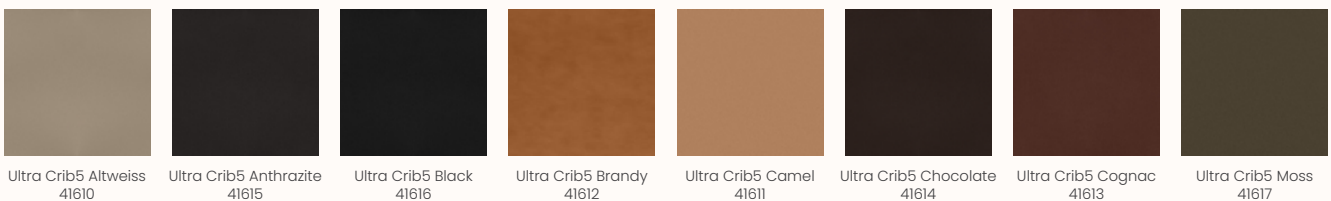
It has a uniform grain structure spanning over the entire hide, giving ULTRA CRIB5 a consistent look. Buffed and embossed, and truly nice to touch.

ULTRA CRIB5 is water repellent, stain resistant and easy to maintain, due to its extremely strong protective finish. As a result, it will take longer to show signs of aging or fading due to wear and tear or exposure to light.

Type: Protected leather

Hide Size: 3.5 - 4.5 sqm

Thickness: 0.9-1.1mm



Leather Category II - Matara (Faux) | Designers Guild

A smart, sophisticated faux leather with a naturalistic grain, soft hand, subtle sheen and a suede effect backing. Incredibly hard wearing, can be treated to most FR and IMO standards. In 54 colours, is eminently suitable for both contract and domestic usage.

Composition: 70% PVC, 22% PI, 8% Pu

Width: 137cm

Weight: 730gsm

Martindale: 100.000



Leather Category II - Nuance | Sørensen

Nuance has a remarkable depth and dimension that exudes authenticity, with the added advantage that it's designed to be durable. It's a new type of protected leather developed in collaboration with Space Copenhagen, where the nuances are seen in the natural texture as well as the tones. The natural patterns and imperfections are visible, reflecting the innate beauty of each hide.

Composition: 100% Protected Leather



Leather Category II - Flux | Sørensen

Flux is a type of protected leather that resembles nubuck, with a matt look akin to neoprene. It's an innovative leather developed in collaboration with architect and designer David Thulstrup, featuring a velvety-soft surface with a muted effect that's ultra modern. In addition to all the advantages of protection, involving a very fine surface coating that's unperceivable to the eye, which renders Flux resistant to scuffing and fading.

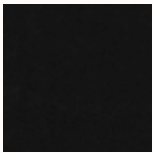
Composition: 100% Protected Leather



Leather Category II - Envy | Sørensen

Envy is an accessible leather with an aura of elegance. Smooth to the touch with a slight sheen to the surface, it's a captivating leather that awakens the senses. Look closer and you can see very subtle natural markings, which are minimised via a special sanding process. Add to that a light, transparent wax that helps protect the surface and the result is a lovely feel with a brilliant sense of depth.

Composition: 100% Aniline Leather



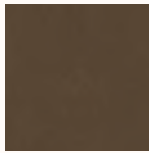
ENVY BLACK
20321



ENVY OLIVE
20324



ENVY ANTHRAZITE
20323



ENVY NOUGAT
20322



ENVY COGNAC
20320

Leather Category III - Dunes | Sørensen

DUNES® is an exclusive Aniline leather with a natural, rustic look and a sublime, almost velvety tactile feel. Achieved via a process of sanding and applying a special type of leather oil to the surface. At the same time, DUNES® boasts a matt look that's raw with a touch of understated elegance. Part of DUNES®' extra appeal are the natural markings which bring a unique personality to each hide. Colour tones will also vary from hide to hide and within each individual hide. Watch for a beautiful patina that will appear over time as a result of the leather's usage, exposure to daylight and interior lighting. With use, the leather will become shinier and smoother over time.

DUNES® collection has received the Nordic Swan Ecolabel. A highly-respected certification verifying that it meets their rigorous requirements regarding the environment, use of energy and resources. Additionally, as a result of meeting a separate set of criteria, DUNES® can be specified as one of the components as part of the certification process for a design to be awarded the EU Ecolabel (EU Blomst in Danish).

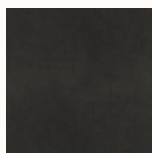
Type: Aniline leather

Hide Size: 4.5 - 5.5 sqm

Thickness: 1.1-1.3mm



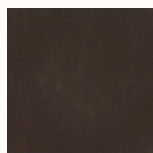
Anthrazite
21003



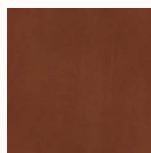
Grey
21007



Racing Green
21005



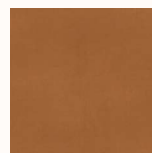
Dark Brown
21001



Rust
21002



Camel
21004



Cognac
21000

Leather Category III - Terra | Sørensen

Terra is a new type of innovative high-end leather developed in collaboration with Norm Architects, known for their thoughtful design philosophy that seeks to engage the senses and enrich the quality of life. It's an extremely soft aniline leather featuring a silky-matt surface with a subtle shine and a velvety tactile feel that evokes one's senses, offering a touch of modern sophisticated elegance.

Composition: 100% Aniline Leather



Leather Category III - Spectrum | Sørensen

SPECTRUM/NOIR is a soft Semi-aniline leather with a subtle texture that looks uniform, thanks to a light surface finish that helps protect the leather from dirt, stains and fading resulting from exposure to light. As a natural, full-grain leather, the visible pores on the smooth surface add a unique, authentic character to a matt leather with a subtle shine.

Our SPECTRUM/NOIR collection has received the LEATHER STANDARD by OEKO-TEX® certification. A scientifically-founded, world-wide testing and certification system for leather. Based on international test standards and other recognised test processes, the certification involves around 100 test parameters. Including numerous environmentally-relevant substances and chemicals harmful to the health. The more intensively an article comes into contact with the skin, the stricter the human-ecological requirements that it must fulfil.

Type: Semi-aniline leather

Hide Size: 5.0 - 6.0 sqm

Thickness: 1.0-1.2mm





Leather Category IV - Sheepskin | Scandilock

Skandilock Curly 17mm is developed for furniture upholstery but can also be used for different furnishing assignments. The wool has a curly texture and is high in density which makes it durable and soft. Curly 17mm comes in three color collections. In the Classic Collection, the wool has been dyed with highlighted tips and darker base which gives the overall appearance a beautiful marbled finish. In the Standard Collection the wool is dyed in one color tone which gives an even end result that enhances the curly texture of the wool. Limited Collection are colors that varies in stock and therefore the lead times can be longer when ordered in larger quantities.

Original Raw Material: SAustralia crossbred, lamb/sheep

Wool Length: 17mm

Leather Thickness: 1-3mm

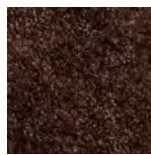
Classic Collection



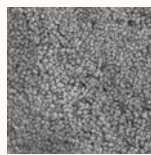
Sahara
07



Charcoal
14



Espresso
15

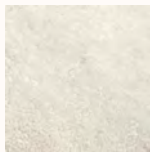


Scandinavian Grey
22

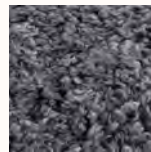
Standard Collection



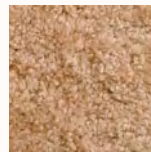
Black
01



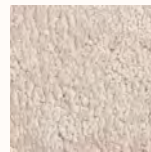
Off White
02



Anthracite
04



Honey
08

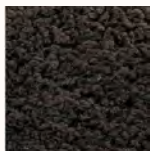


Moonlight
09

Limited Collection



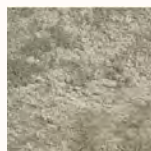
Graphite
03



Mocha
05



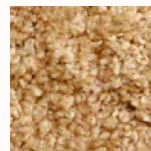
Mushroom
06



Green Tea
10



Ruby
11



Maple
18