

ZenithRBA.com

Zenith RBA



Zenith RBA

An Indigenous business that provides commercial furniture to government & corporate organisations. Zenith RBA is dedicated to providing world class products, services & supporting Indigenous Australian's.

We actively seek to engage local Indigenous trades and services particularly for regional and remote locations. Zenith RBA encourages both talent and supplier diversity, underlying our commitment to closing the gap on Indigenous disadvantage.

Contents

Introduction

Zenith RBA Acknowledgment	4
Cyclone Dreaming	6
About Zenith RBA	8
Products	10

Partnerships

Clontarf Foundation	12
Polly Farmer Foundation	17
MITs	18

Project Case Studies

Commonwealth Department	20
Woodside	22
One Canberra Avenue	24

Certifications

Kinaway	26
Supply Nation	28

Contact Us

Zenith Showrooms	30
Jeremy Abbott, Zenith RBA Director	30

Zenith RBA acknowledge the Traditional Owners of country throughout Australia. We pay our respect to their elders past and present and extend that respect to all Aboriginal and Torres Strait Islander peoples today.



Acknowledgment Plaque (Kingsgrove) Artwork: Goolay'yari Naba (Family of the Cook's River region) By Shannon Foster - Bedigal People



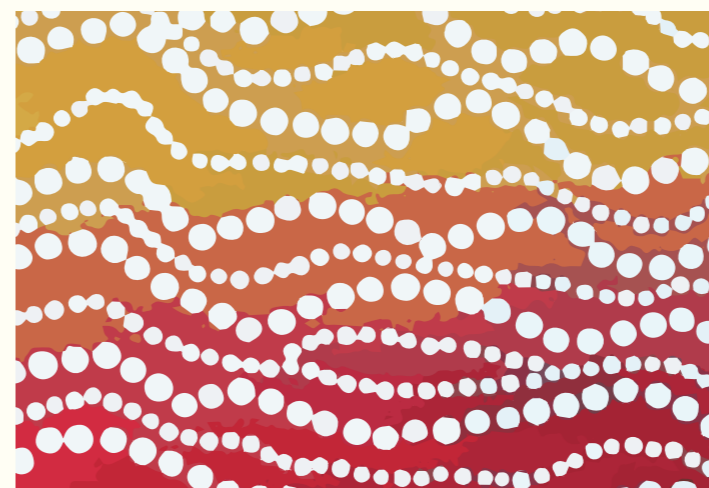
Acknowledgment Plaque (WA) Artwork by Deborah Newenham - Coertse



Acknowledgment Plaque (VIC) Artwork by Mandy Nicholson - Kulin Nation



Acknowledgment Plaque (ACT) Artwork: Ngunnawal Rainbow Serpent By Richie Allan - Ngunnawal People



Acknowledgment Plaque (SA) Artwork: Watangeri (Twilight) By Carly Tarkari Dodd - Kaurna People



Acknowledgment Plaque (QLD) Artwork by Shannon Ruska - Yuggera People

'At its heart, reconciliation is about strengthening relationships between Aboriginal and Torres Strait Islander peoples and non- Indigenous peoples, for the benefit of all Australians'

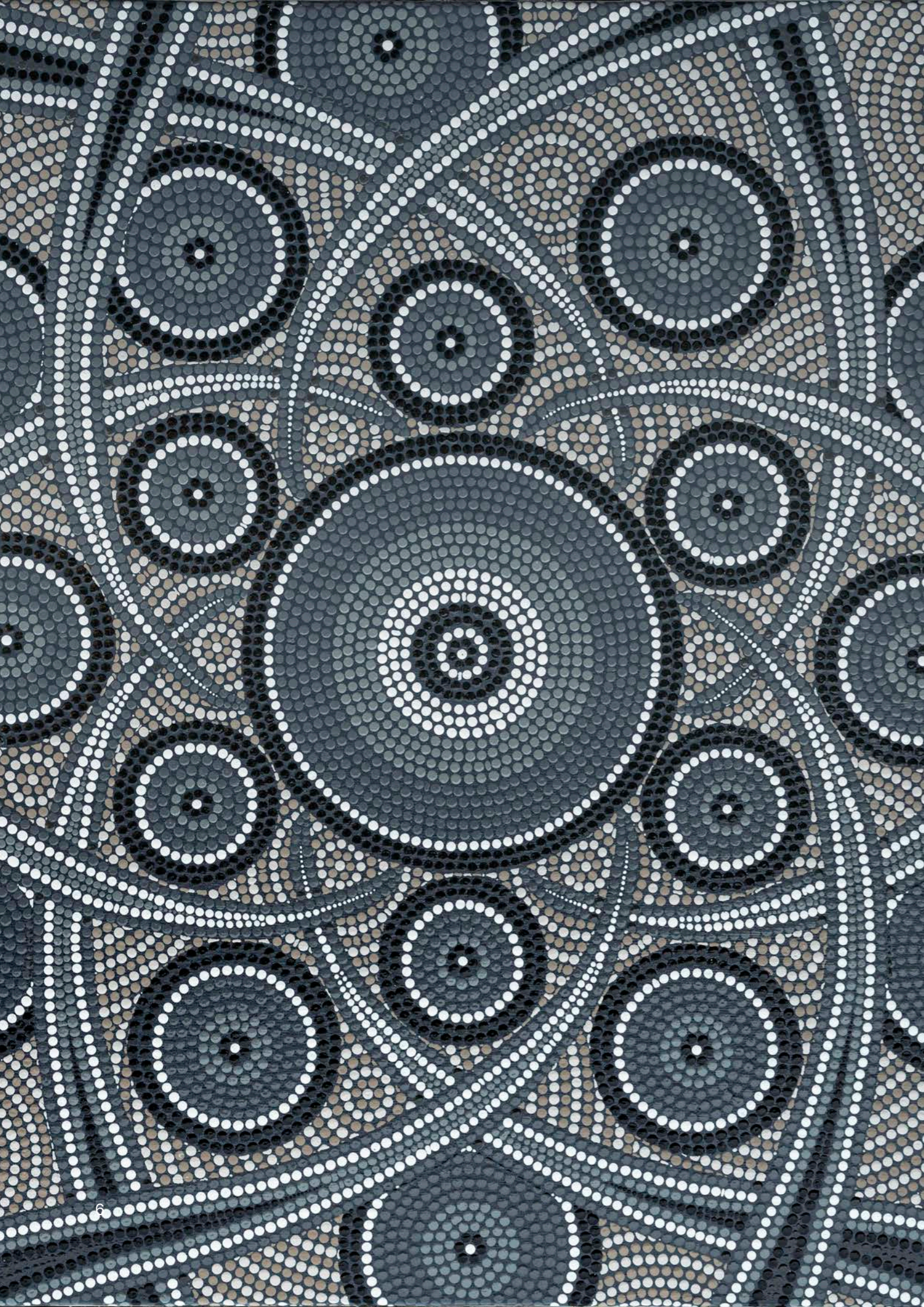
- Reconciliation Australia



Acknowledgment Plaque (NSW) Artwork: Marragawan Gabara (Brown Snake Dance) by Shannon Foster - Eora Nation



Acknowledgment Plaque (Sandringham) by Nakia Cadd - Bunurong/Boon Wurrung People

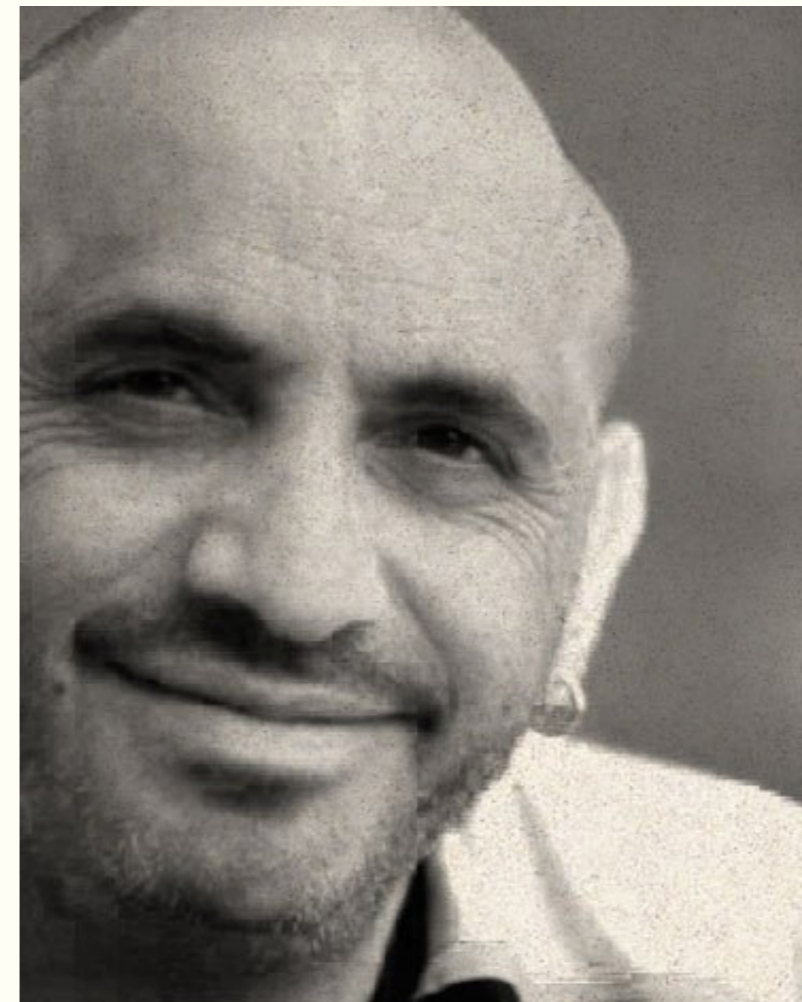


Cyclone Dreaming

Zenith RBA commissioned Rex Winston Walford to complete the artwork as part of it's brand development.

"Cyclone Dreaming is about the power and majesty of Nature. A cyclone is an unstoppable force. As a cyclone approaches, anticipation builds. At first the wind is a light breeze. Its strength begins to grow. And then the cyclone arrives. The cyclone turns everything upside down. It smashes everything. It rearranges everything. It does not care about our values, our possessions. Nothing can stand in its way except the sea itself and the mountains. Everything else is destroyed. And then almost as suddenly as it has arrived it moves on and is gone, leaving stillness."

- Rex Winston Walford



Rex Winston Walford

Zenith RBA is dedicated to providing world class products & services to corporate and government markets

Zenith RBA is a Supply Nation certified Indigenous business. It was established to support and grow the Indigenous business sector and empower Indigenous Australians. **Zenith RBA is a partnership between RBA Abbott Pty Ltd and Zenith Interiors.**

At the forefront of Zenith RBA is our Director, Jeremy Abbott, a proud Aboriginal man of the Pini people in Western Australia. With an extensive 18-year corporate background spanning sales, marketing, relationships, business development, and strategy, Jeremy aims to ensure the business delivers for our trusted clients, surpasses their expectations and achieves outcomes.

Jeremy's leadership is not only grounded in professional expertise but also shaped by a profound family connection. His father-in-law, the founder of Zenith Interiors, brings together family and personal relationships across the business that span over a decade. This enduring connection instills a deep respect, fortifying relationships and trust, enabling us to deliver seamlessly on major projects nationwide.

Beyond business, our mission is to create a lasting legacy for Jeremy and his family with the RBA in our name being Jeremy's Grandfathers initials (Robert Bruce Ashwin). Bruce as he was known was a Stolen Generations child taken from his family at two years of age to the Moore River Native Settlement in Western Australia and then onto Sister Kate's Children's Home in Perth.

Under Jeremy's guidance and in partnership with Zenith Interiors' many years of experience, Zenith RBA assures you of the finest in product and service quality along with the commitment to achieving major community, employment and awareness outcomes to support Indigenous Australian's.



Jeremy Abbott, Zenith RBA Director

Indigenous Action Plan

Our Indigenous Action Plan ensures we deliver key outcomes in the areas of community, employment and awareness to support the reconciliation framework within Australia as follows:

Community Outcomes

Build respectful relationships to support Indigenous youth education through school and sporting programs.

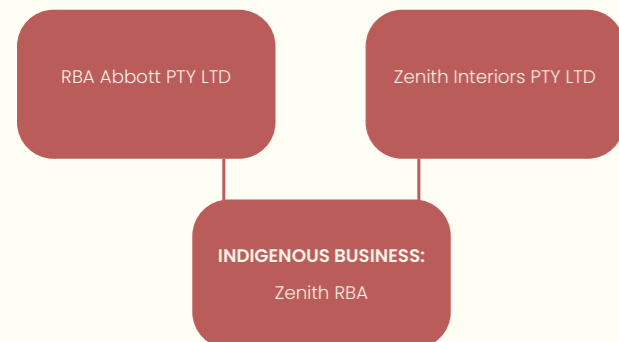
Employment Outcomes

Provide employment opportunities for Indigenous people both internally and via our partner and supply network.

Awareness Outcomes

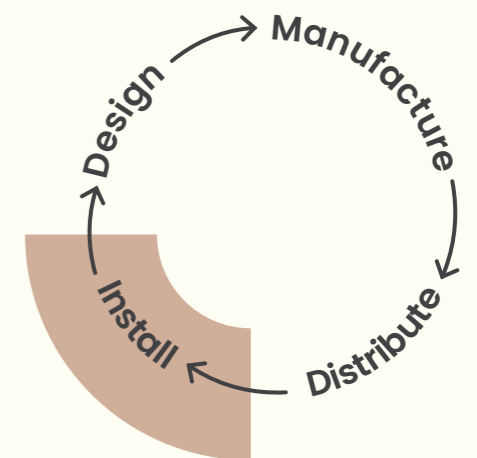
Provide ongoing Indigenous cultural awareness education and acknowledgment for all employees nationally.

By working together we can end the disparity between Indigenous and non-Indigenous Australians through empowerment and employment.



Zenith RBA can design, manufacture, supply and install commercial furniture to all metropolitan, regional and remote locations by our supply partner Zenith Interiors.

These products include workstations, storage, task seating and loose furniture. Zenith Interiors has over 60 years experience manufacturing and delivering world class products and services to a wide range of commercial clients.





Products

Zenith RBA provides workplace solutions for commercial environments. The workplace is a dynamic environment supporting multiple modes of working. Zenith RBA's range of products caters for all work styles and functional requirements including; Focus work, collaboration, ergonomics, technology support, acoustics, break-out spaces and products to suit agile teams.

Zenith are able to supply Indigenous sourced material in the supply chain such as timber harvested from Lama Lama or Yolngu Countries. Including Indigenous designed fabric on workstation screens, seating and acoustic panels.





clontarf
foundation

Partnership with Clontarf Foundation

Clontarf exist to improve the education, discipline, life skills, self-esteem, and employment prospects of young Aboriginal and Torres Strait Islander men to equip them to participate more meaningfully in society.

Zenith RBA are excited to partner with Clontarf as a key community initiative within our Indigenous Action Plan. Education is vital for young Indigenous kids to help close the gap on learning outcomes and we believe in Clontarf's program of getting them to attend school, finish Year 12 and enter employment as being vital in helping them shape their own and their communities' lives.

Clontarf currently partners with schools and communities to create Clontarf Academies which are embedded within the school's grounds and education program. They operate 138 Academies in WA, NT, QLD, NSW, and VIC supporting more than 10,000 young Indigenous men.

Zenith RBA's involvement will look to deliver the following outcomes as part of our Indigenous Action Plan:

- Our partnership and investment ensure an additional 15 young Indigenous kids can start the program in 2022/23
- Attend employment forums to showcase our business and industry as an employer of choice
- Showcase our factories and showrooms with site visits and work experience opportunities
- Present employment opportunities to interested Academy students
- Connect with select state academies for staff to further their cultural awareness and education

Zenith RBA Director, Jeremy Abbott and Sales Director, Peter Appel recently visited the Bairnsdale Academy with other Clontarf partners to further understand the impact and benefits of our partnership.

"Peter and I were thrilled to enjoy dinner with Academy Director, Paul "Turk" Carroll, his team, and some of the Clontarf Alumni. The next morning, we jumped on the bus with Turk at 6am to pick up some of the 66 Indigenous kids for an early morning training session at the gym. Following the training session, we enjoyed breakfast in the Clontarf room at Bairnsdale Secondary College where I was able to share my story with the kids, along with some words of encouragement and showcase Zenith RBA's business.



Our WA State Manager Jane Millington also attended a footy "super" training session with nine different academies across Perth and got to meet, train and share breakfast with the WA team.

Jane was able to see firsthand the important and positive life-changing work Clontarf are doing in the community.

Zenith RBA will continue to connect with various Academies across the country and look forward to a rewarding partnership with Clontarf.



Perth State Manager, Jane Millington & Clontarf Community

Thank You



Zenith RBA

The Clontarf Foundation exists to improve the education, discipline, self-esteem, life skills and employment prospects of young Aboriginal and Torres Strait Islander men and by doing so, equips them to participate more meaningfully in society.

Thank you for your wonderful contribution to our inaugural Clontarf Foundation State of Origin Series.

We hope you enjoyed this life-affirming event as much as our academy members and staff did.


Gerard Neesham
Chief Executive Officer
Clontarf Foundation



clontarf
foundation



Partnership with Polly Farmer Foundation

Zenith RBA are delighted to partner with the Polly Farmer Foundation.

The foundation which has been delivering outcomes for Aboriginal children across the country for over 25 years, aims to ensure all Aboriginal Australian's are able to have an enriching and successful education and a wide range of career and life choices. The foundation is committed to strengths-based approach with academic enrichment at the heart of the primary and secondary after school programs.

The Foundation has a special personal connection for our Director, Jeremy Abbott "I am extremely proud of this new partnership with the Polly Farmer Foundation. The foundation has a special personal connection for me with my Grandfather, Robert Bruce Ashwin (of which RBA in our business name is in honour of) had a special friendship with Polly as they were being raised together at Sister Kate's Childrens home. I am excited about the opportunity to work together with the foundation which will greatly assist us in achieving our community, employment and awareness outcomes". Jeremy is also currently a board member of the foundation.

The foundation was set up in 1994 and has been in operation for over 25 years, built off the back of Polly's belief that:

"Education is the key for Aboriginal people to take their rightful place in modern Australian society. Unless we rectify the imbalance in opportunities currently available, young Aboriginal people will continue to be frustrated and unable to develop their talents to make their rightful contribution to the economy and society...and we will all be poorer for that".

The Polly Farmer Foundation currently have over 2700 students enrolled in 138 schools around Australia.

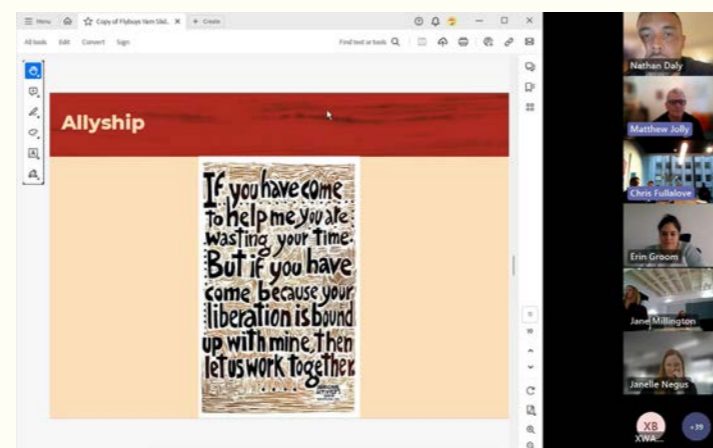
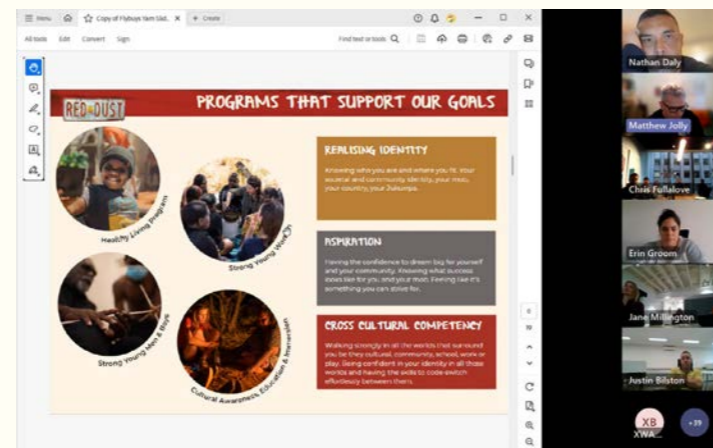
NAIDOC Week 2023 Yarn for Our Elders: Red Dust Panel Discussion with Zenith RBA

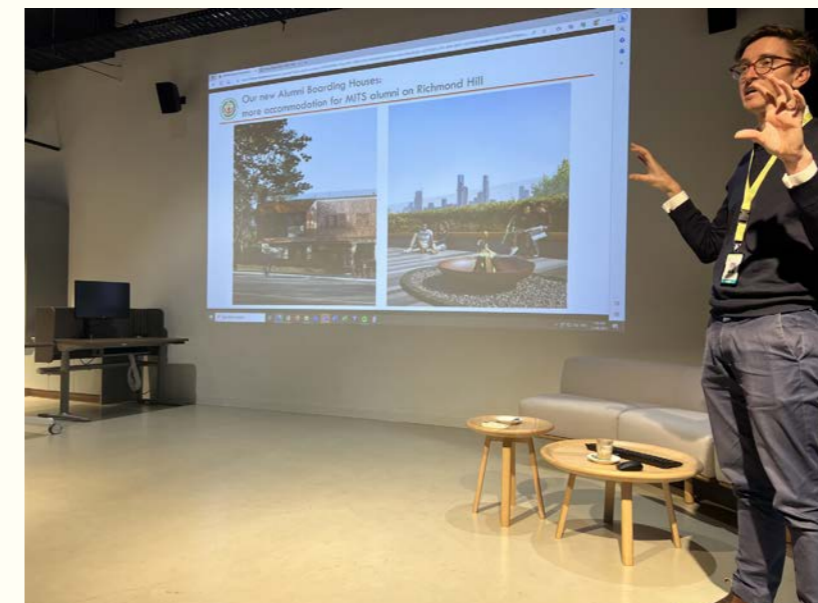
NAIDOC Week celebrates the history, culture and achievements of First Nations peoples. Zenith and Zenith RBA enjoyed the great opportunity to learn more about Aboriginal and Torres Strait Islander communities.

With this year's theme being "For Our Elders" Zenith invited Red Dust Role Models to facilitate an educational discussion on the vital role that Elders have played and continue to play in Aboriginal & Torres Strait families and communities.

Red Dust Role Models works together with organisations and Australians more broadly to help build cross-cultural competency through tailored cultural awareness education and immersion experiences.

Huge thank you to Nathan Daly and Matthew Jolly from Red Dust Role Models who presented the workshop.





Ed Tudor educating Zenith staff about MITS program

As part of our Indigenous Action Plan, Zenith RBA have supported MITS with their soon to be completed offices and new boarding house on Church St in Richmond.

Zenith RBA has supported the followings:

- 11 Orbis Workstations for their administration
- 1 x Precinct Ottoman (Willie Weston Durrmu (LB) 'Geo'
- 6 x Chat Stools (Willie Weston Duurmu (KK) 'Terra', Native Seeds 'Olive' and Syaw (Fish net) 'waterlily'
- Various miscellaneous furniture

In addition to the above one of the MITS Year 11 Alumni students completed two weeks work experience at our Sandringham Factory.

It was also great to have MITS CEO, Ed Tudor in during the year to further educate our staff on the MITS program and the significant life changing outcomes they are achieving for our Indigenous leaders of tomorrow.



Zenith RBA partner with Melbourne Indigenous Transition School (MITS)

Zenith RBA are thrilled to partner with MITS. MITS is a Year 7-8 transition school on Wurundjeri Country in Richmond, Melbourne. The school supports Indigenous students from remote and regional communities in the NT and Victoria along with providing a boarding house for existing students and Alumni that go onto partner schools for Years 9-12. MITS provides young Indigenous people with a 2-year school and boarding program to enable them to confidentially step into great Melbourne schools while remaining culturally strong and connected with their families.

MITS ultimately aims to support and develop their Indigenous students to go on and lead empowered lives full of choice and opportunity.

For more information please visit - [Welcome to MITS | Melbourne Indigenous Transition School](#)



Orbis Workstations



Chat Stools

Case Study

Commonwealth Department



Designer

AMC Architecture

Builder

Icon

Project Manager

Icon

Location

Fairbairn, Canberra

Photographer

Adam McGrath (H Creations)

Featured Products

- Invention Chair
- Jac 4 Star Chair
- Kissen Conference Table
- Kissen High Table
- Kissen Table
- Lottus Stool
- Open Lounge
- Orbis Workstation
- Precinct Pod Enclosed
- Precinct Screens
- Smart Stool
- Smart Chair
- Be Task Chair
- Chat Ottoman
- Edo Armchair
- Edo Curve
- Hull Lounge
- Hull Lounge Chair

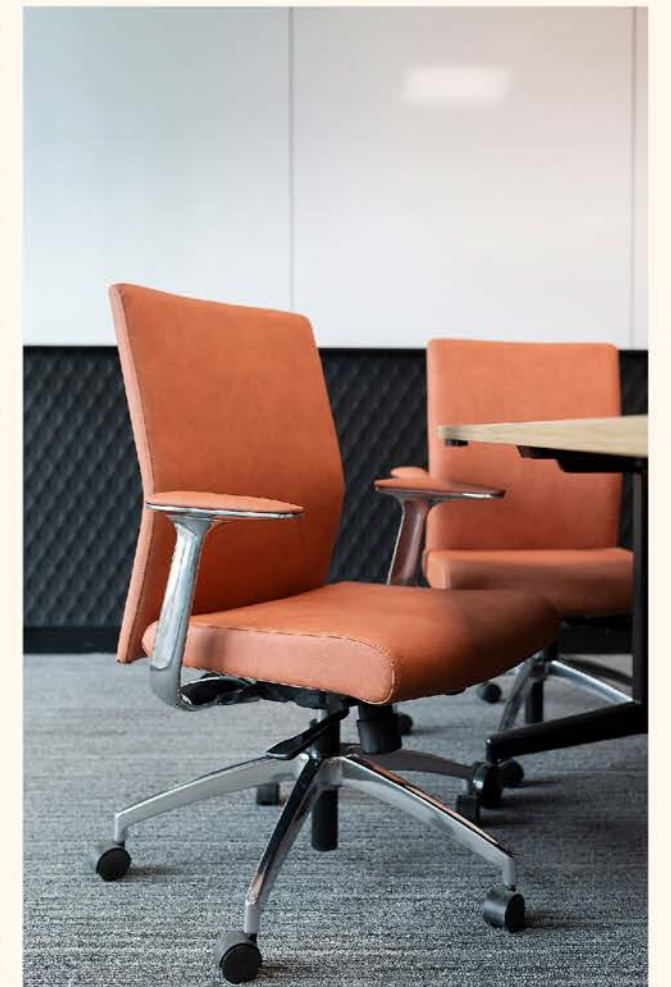
About the project

The Department, seeking to capitalise on the benefits of activity-based and flexible working principles, identified a unique opportunity to create a truly bespoke working environment through the integrated fitout of a purpose-built commercial building constructed within Canberra Airport Group's (CAG) Fairbairn Commercial Precinct in Canberra, ACT.

A suite of work zones, tailored to facilitate a range of tasks requiring varied levels of focus and collaboration, are distributed to encourage mobility and interaction, promote collaboration, increase engagement and improve the health and wellbeing of Department staff. The light-filled fitout extends across 3 levels, connected by triple-height atria and floating communication stairs. Utilising a suite of activity "zones" and integrating a sophisticated ICT system, AMC has created a working environment that is responsive and flexible to the needs of users, catering for a range of work modes and interactions within an inviting and contemporary setting.

Case Study

Commonwealth Department



Case Study

Woodside



Designer
Unispace

Builder
Cox Architecture

Location
Perth, Western Australia

Photographer
Shannon McGrath

Featured Products

- Fitzroy Laptop Table
- Orbis Workstation
- Silta Table

About the project

The new headquarters for the largest Australian natural gas producer, designed by Cox Architecture (base-building) and Unispace (interior fit out), sets a new standard for workplace design in Australia, placing work-life balance and employee wellbeing at the fore, while still remaining modern, forward looking, and adhering to the ever-changing needs of its employees.

Case Study

Woodside





Case Study

One Canberra Avenue

Project Manager
Willemsen Group

Designer
Willemsen Group

Builder
Willemsen Group

Location
Canberra, Australian Capital Territory, Australia

Photographer
Naomi & Brenton - Light Bulb Studio

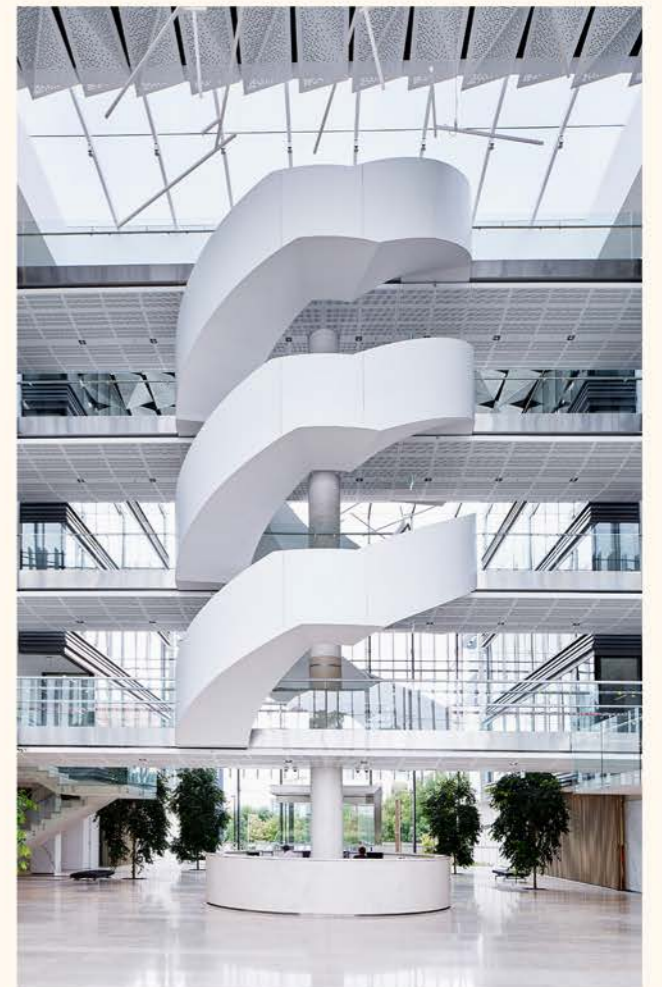
- Featured Products**
- Rumba Workstation
 - Flo Monitor arm

About the project

Zenith ACT worked with the building developer Anthony Willemsen to design, manufacture and supply approx. 2500x Rumba electric workstations with custom joinery and task lighting forming part of the scope of works.

Case Study

One Canberra Avenue



Case Study

Civil Aviation Safety Authority (CASA)



Case Study

CASA



Designer

The Mill

Builder

Projex

Location

Canberra ACT

Photographer

H Creations

Featured Products

- Caesar Chair
- Vox Chair
- Nido Armchair
- Someday Lounge
- Jac Sled Chair
- Alter Lounge Chair
- Platforma Lounge
- Kissen Table
- SOL-Lap
- Verse Meeting Room
- Edo Teahouse

About the project

The Civil Aviation Safety Authority (CASA) is a government body that ensures the safety of aviation in Australia. CASA licenses pilots, registers aircraft, certifies aerodromes, oversees aviation safety and promotes safety awareness. It does this by setting standards and safety outcomes that cover maintenance, airspace, aerodromes, licensing and all types of flying operations. When they recently relocated their Canberra office, space optimisation and agile working areas were high on CASA's list of priorities. Crucially, spaces had to be adaptive with flexible furnishings to support task-focused work modalities. Additionally, spaces had to be flexible to adapt to change without the need to alter the built layout.

Zenith RBA was engaged to address these objectives and provide furniture solutions that facilitate a happy, healthy and productive work environment. Zenith RBA is a Supply Nation certified business and provides furniture solutions to Government and Corporations who seek to engage Indigenous businesses to deliver outcomes for Indigenous communities. With a focus on Community, Employment and Awareness, Zenith RBA is committed to closing the gap on Indigenous disadvantage through supporting organisations such as the Polly Farmer Foundation, Clontarf Foundation and Melbourne Indigenous Transition School (MITS).



CERTIFICATE OF MEMBERSHIP

Valid October 2023 - October 2024

InteriorCo RBA



ANCIENT GOLD DUST

VERIFIED BY KINAWAY CHAMBER OF COMMERCE VIC LTD AS A BUSINESS OPERATING IN THE STATE OF VICTORIA THAT IS AT LEAST 51% ABORIGINAL OWNED, MANAGED OR CONTROLLED.

Donald Betts

DONALD BETTS
Chief Executive Officer



Supply Nation



Confirmation of Supply Nation Certification

This is to certify that

InteriorCo RBA Pty Ltd

Australian Business Number 57613075246

is at least 51 per cent owned by Indigenous Australians, managed by Indigenous Australians,
and controlled by Indigenous Australians.

This company's certification commenced on 19 April 2022

Under Supply Nation's certification policy, all businesses will be subjected to a rolling audit process in
order to ensure continued compliance with Supply Nation's certification criteria.

Issued by Supply Nation - ACN 134 720 362

Date issued: 19 April 2022

A handwritten signature in black ink, appearing to read "Michael McLeod".

Michael McLeod
Chairperson, Supply Nation

A handwritten signature in black ink, appearing to read "Laura Berry".

Laura Berry
CEO, Supply Nation



Further Information Contact

info@zenithinteriors.com

Melbourne- Wurundjeri Woi Wurrung & Bunurong Boon Wurrung/Kulin Nation

T: +61 3 9693 2600

Level 6, 555 Bourke Street, Melbourne VIC 3000, Australia

Sydney – Gadigal/Eora Nation

T: +61 2 9125 6700

Level 2, 61 Marlborough Street, Surry Hills NSW 2010, Australia

Canberra – Ngunnawal

T: +61 2 6199 0900

Unit 4, 12 Quilpie Street, Fyshwick ACT 2609, Australia

Brisbane – Yuggera

T: +61 7 3170 0000

Level 2, 11 Commercial Road, Newstead 4006, Queensland

Perth – Whadjuk/Noongar

T: +61 8 9466 1555

10 Queen Street, Perth WA 6000, Australia

Adelaide – Kurna

T: +61 8 8223 3060

Level 2, 211 Pulteney Street, Adelaide SA 5000, Australia

For more information on Zenith RBA please contact Jeremy Abbott, Zenith RBA Director
E: Jeremy.Abbott@interiorcorba.com

ZenithRBA.com

Zenith RBA

Certified Indigenous Enterprise