

Lapalma Finishes Specification



CONTENTS:

Fabric	
CAT A	2
CAT B	13
CAT C	33
CAT D	53
CAT E	61

Soft Leather	
Pelle	63
Cuoio	64

CAT A - Chili GABRIEL

Application

Contract and domestic use.

Description

Composition:
100% Post-consumer recycled polyester fr (fr inside the fiber)

Width:
140 cm

Weight:
470 g/lm

Tests

Abrasion
App. 60,000 Martindale rubs

Pilling
4-5, ISO 1-5 (EN ISO 12945)

Light fastness
5-8, ISO 1-8 (ISO 105-B02)

Fastness to rubbing
dry 4-5
wet 4-5

Flame resistance
CA TB 117-2013
NF P 92-503/504/505 M1

DIN 4102 - B1
Class Uno UNI 9175 Class 1 IEMME
BS EN 1021 1&2 Cigarette and Match
BS EN 1021-1 Cigarette
BS 7176 Medium hazard
BS 5852 Crib 5
AM 18 - NF D 60-013-(only for fabric)
DIN EN 13501-1 B-s1,d0

Care

Wash or dry cleaning P(W).

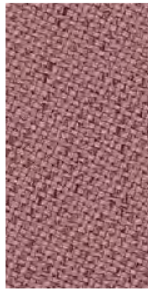
Samples are purely indicative because of natural inconsistencies that occur in the raw materials. As a result there may be small differences in the product delivered.



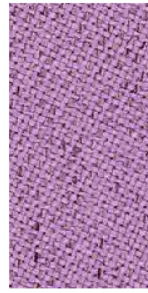
CAT A - Chili GABRIEL



64203



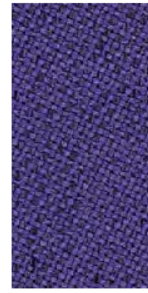
65111



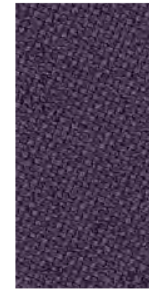
65107



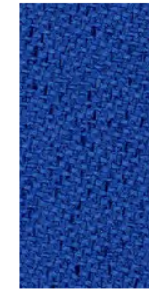
65108



65109



65110



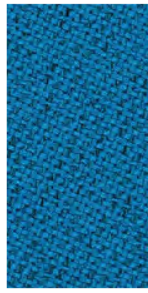
66171



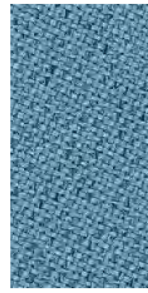
66174



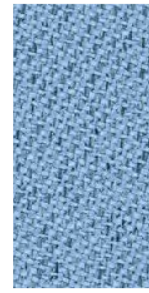
66173



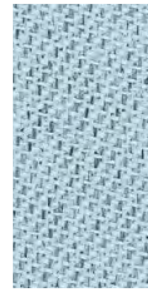
67085



66176



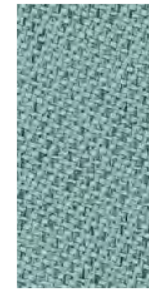
66172



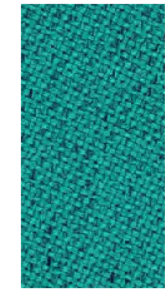
66175



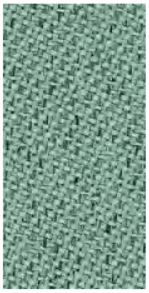
68191



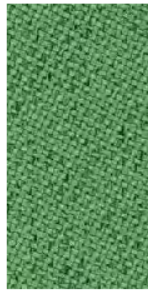
68189



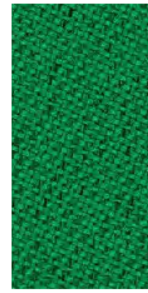
68190



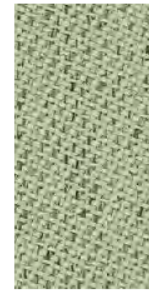
68192



68193



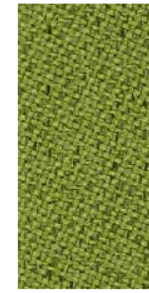
68194



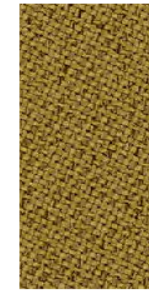
68195



68196



68197



68198

CAT A - Jet FIDIVI

Application

Contract and domestic use.

Description

Composition:
100% Polyester - Trevira CS®

Width: 140 cm

Weight: 260 g/m²

Tests

Abrasion
UNI EN ISO 12947-2 65000 ± 10% rubs

Pilling
UNI EN ISO 12945-2 5 (Standard picture)
Tolerance: from 4 to 5

Colour fastness
to rubbing UNI EN ISO 105-X12
(4/5 grey scale)
Tolerance: from 4 to 5
to light UNI EN ISO 105-B02 6 (Blue scale)
Tolerance: from 5 to 8

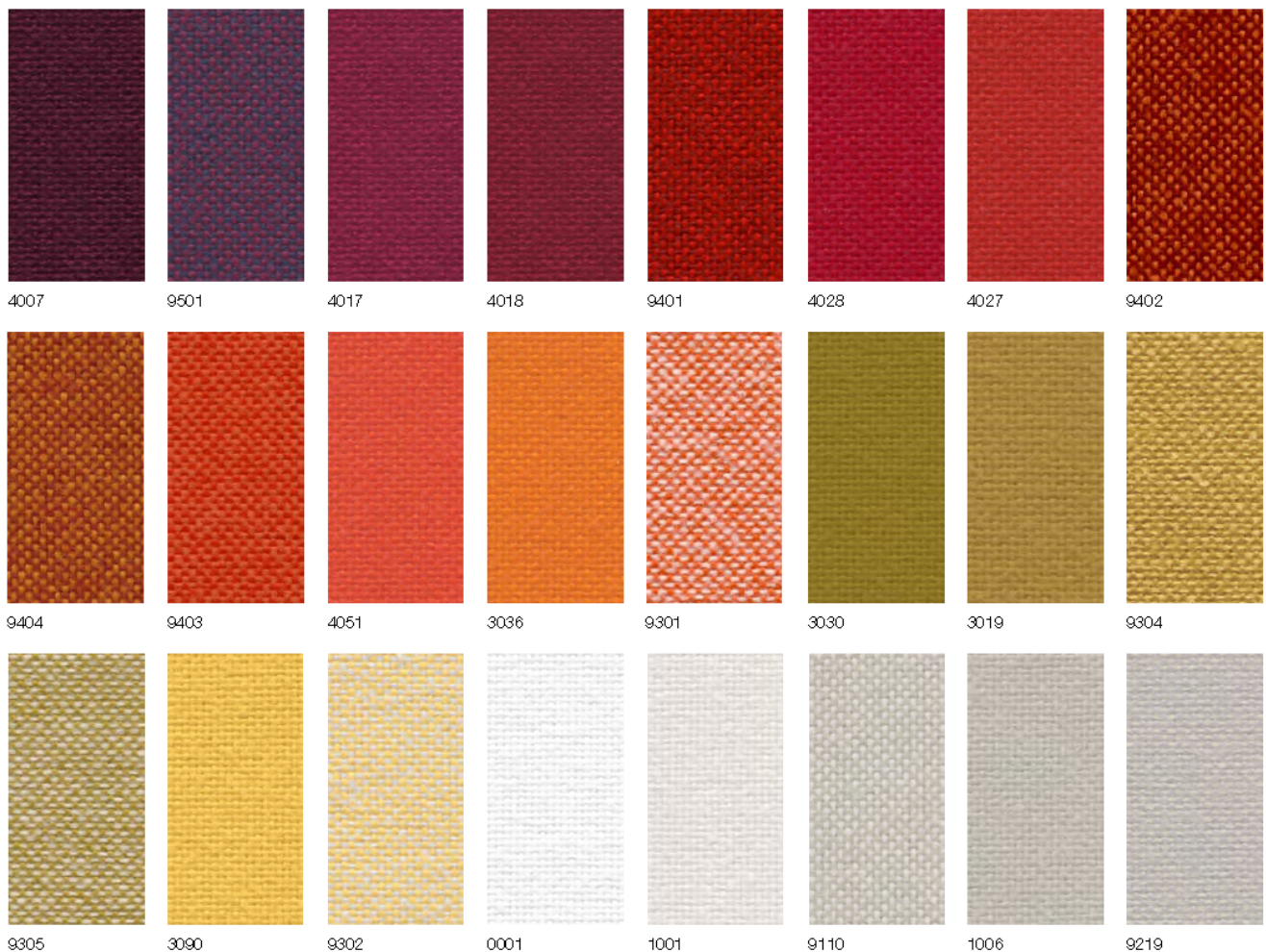
Flame resistance

C1
B1
M1
CRIB 5
EN 1021/1-2
IMO Res. A 652 (16) Part 8
IMO Res. A 471 (XII) Part 7
NF D 60013 Class AM 18

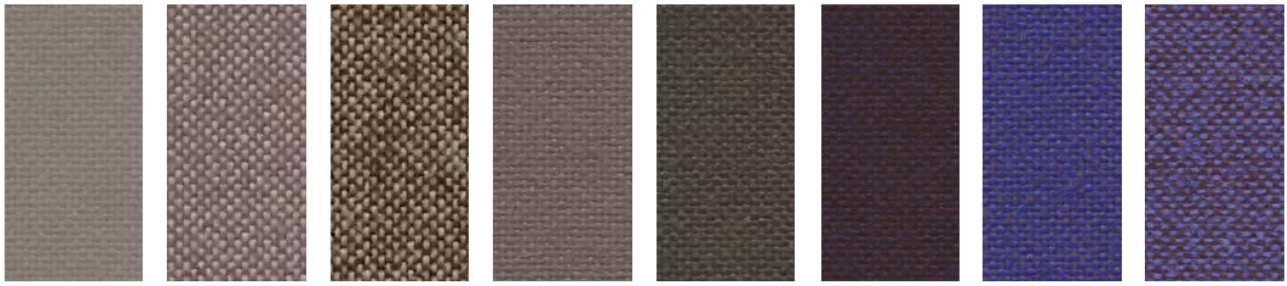
Care

Dry clean or clean with foam
detergents.

Samples are purely indicative because of
natural inconsistencies that occur in the
raw materials. As a result there may be
small differences in the product delivered.



CAT A - Jet FIDIVI



2024

9109

9108

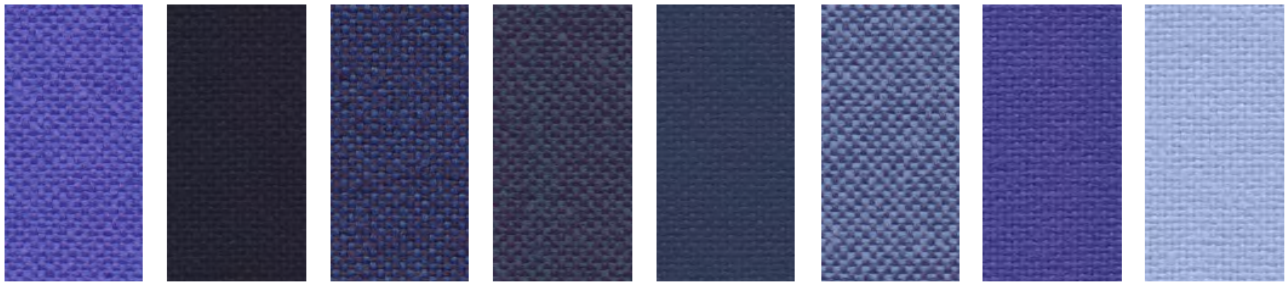
2012

2010

9607

9605

9606



9604

6098

9603

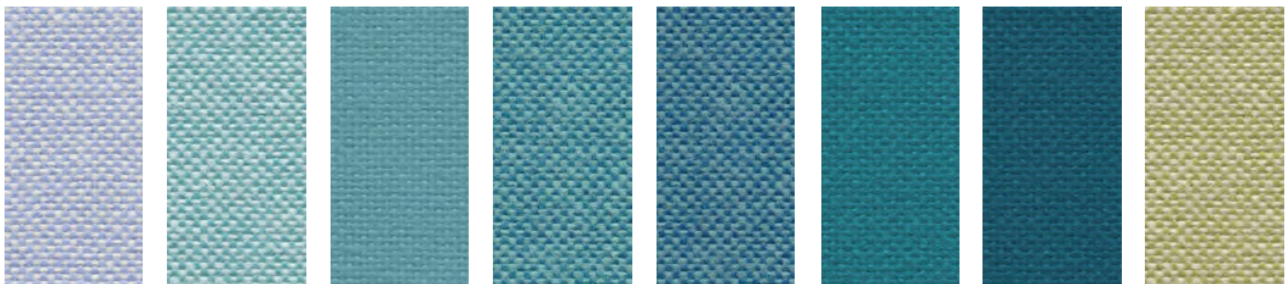
9602

6013

9601

6095

6056



9600

9610

6007

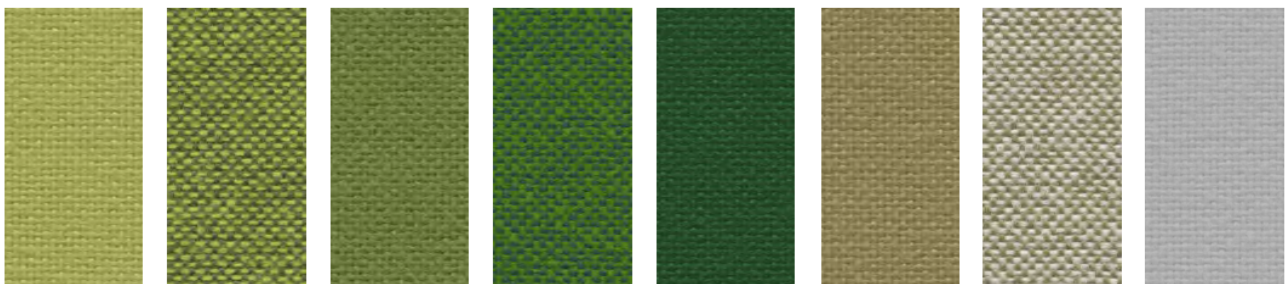
9609

9608

6091

6014

9701



7041

9702

7025

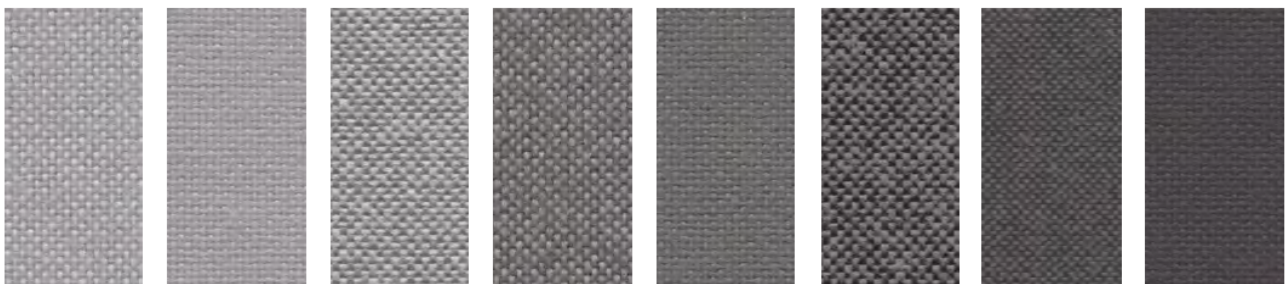
9704

7014

7034

9703

8001



9803

8078

9804

9805

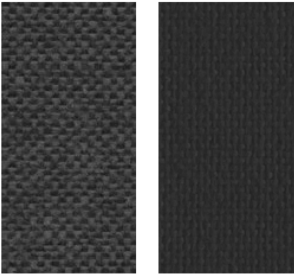
8009

9294

9281

8017

CAT A - Jet FIDIVI



9806

8033

CAT A - Maya FIDIVI

Application

Contract and domestic use.

Description

Composition:
100% Polyester - Trevira CS®

Width: 140 cm

Weight: 420 g/m2

Tests

Abrasion
UNI EN ISO 12947-2 100000 ± 10% rubs

Pilling
UNI EN ISO 12945-2 5 (Standard picture)
Tolerance: from 4 to 5

Colour fastness
to rubbing UNI EN ISO 105-X12
(4/5 grey scale)
Tolerance: from 4 to 5
to light UNI EN ISO 105-B02 6 (Blue scale)
Tolerance: from 5 to 8

Flame resistance

C1
B1
M1
CRIB 5
EN 1021/1-2
IMO Res. A 652 (16) Part 8
IMO Res. A 471 (XII) Part 7
BS 7176 Medium Hazard
NF D 60013 Class AM 18

Care

Dry clean or clean with foam detergents.

Samples are purely indicative because of natural inconsistencies that occur in the raw materials. As a result there may be small differences in the product delivered.



CAT A - Maya FIDIVI



9805



7020



9704



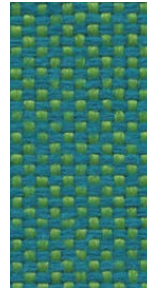
9703



9702



7009



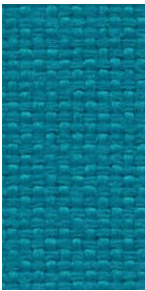
9705



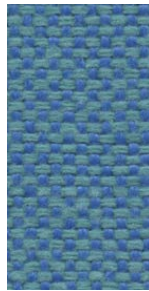
9602



6014



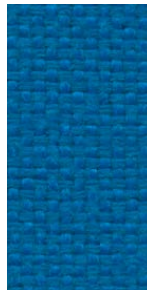
6091



9601



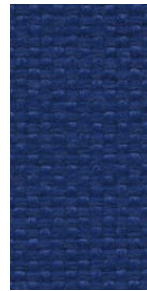
6006



6075



9603



6080



9604



9501



9503



9502

CAT A - Medley GABRIEL

Design

Mette Krebs Petersen

Application

Offices, hotels, institutions, domestic use.

Description

Composition:
100% Polyester

Width: 140 cm

Weight: app. 510 g/lin.m

Tests

Abrasion
App. 75.000 Martindale rubs
EN ISO 12947-2

Pilling
Note 4, EN ISO 12945-2

Light fastness
Note 5-7, ISO 105-B02

Flame resistance
BS EN 1021 1&2
BS 5852 Part 1 0,1 Cigarette & match
California Bulletin CAL 117-E-Class 1
Class Uno UNI 9175 Class 1 I EMME
CA TB 117-2013
ÖNORM B 3825-B2-3800-Q1 UK

Care

Dry clean or clean with foam detergents.

Samples are purely indicative because of natural inconsistencies that occur in the raw materials. As a result there may be small differences in the product delivered.



CAT A - Medley GABRIEL



66145



65086



65012



65011



64124



64125



64123



64019



63013



63017



63016



63063



63064

CAT A - Panama AGORA

Application

Contract and domestic outdoor

Description

Composition:
100% solution Dyed Acrylic

Width:
160 cm

Weight:
280 g/m²

Water repellent with anti-stain
treatment

Tests

Abrasion
App. 20,000 Martindale rubs

Color fastness to artificial weathering
4/5

Colour fastness to rubbing
4-5/5

Colour fastness to chlorinated water
5/5

Light fastness
7/8, ISO 105-B02

Water column
100

Pilling

4-5/5 (EN ISO 12945-2)

Flame resistance

Une 1021 parts 1-2
IMO PEF 2010 Anex 1. part8
BS 5862 Cigarette & Match

Care

Can be washed simply with water in most cases, but remember that the most stubborn dirt can be removed with common household cleaning products, including bleach.

Samples are purely indicative because of natural inconsistencies that occur in the raw materials. As a result there may be small differences in the product delivered.



CAT A - Panama AGORA

							
8000 Tangerine	3737 Azafran	3660 Cherry	8005 Scarlet	8012 Garnet	1321 Brassiere	1319 Navy	8011 Brisa
							
3662 Lapis	3661 Ocean	8006 Acqua	1781 Escarcha	8014 Ice	8007 Artic	3663 Flint	3664 Slate
							
1318 Emerald	3668 Basil	8002 Oliva	3667 Alga	3666 Green	3665 Grass	8004 Menta	20081 Salvia

CAT B - Capture GABRIEL

Application

Contract and domestic use.

Description

Composition:

85% new Zealand wool, 15% polyamide

Width: 140 cm

Weight: app. 475 g/lin.m

Tests

Abrasion
App. 200.000 Martindale rubs
EN ISO 12947

Pilling
Note 4-5, EN ISO 12945

Light fastness
Note 5-7, ISO 105-B02

Flame resistance
EN 1021 1/2
BS 5852 Part 1
BS 5852, part 5 (with treatment)
DIN 4102 B2
UNI 9175/UNI 9176, 1 I-M
US Cal. Tech. Bull. 117.2013

Care

Dry clean or clean with foam
detergents.

Samples are purely indicative because of natural inconsistencies that occur in the raw materials. As a result there may be small differences in the product delivered.



CAT B - Capture GABRIEL



4801



4802



4702



5401



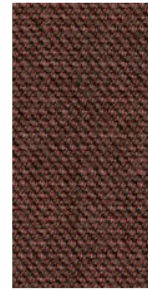
5402



4803



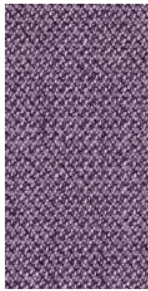
7201



7301



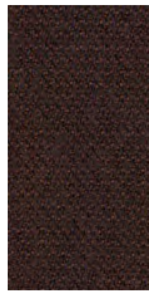
5201



4501



6901



3701



3601



3402



3202



3002



3801



4901



4902



6602



6001



5002



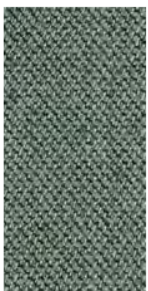
5001



6601



6501



2901



5101



3901



3304



3302



3303



7101



5301

CAT B - Crisp GABRIEL

Application

Contract and domestic use.

Description

Composition:

93% new Zealand wool, 7% polyamide

Width: 140 cm

Weight: app. 460 g/lin.m

Tests

Abrasion
App. 200.000 Martindale rubs
EN ISO 12947-2

Pilling
Note 4-5, EN ISO 12945-2

Light fastness
Note 5-7, ISO 105-B02

Flame resistance
EN 1021 1/2
BS 5852 Part 1 0,1
UNI 9175 1 I-M
US Cal. Tech. Bull. 117.2013
IMO MSC 307(88)

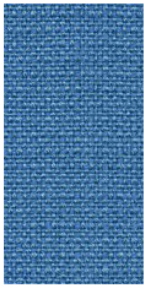
Care

Dry clean or clean with foam
detergents.

Samples are purely indicative because of
natural inconsistencies that occur in the
raw materials. As a result there may be
small differences in the product delivered.



CAT B - Crisp GABRIEL



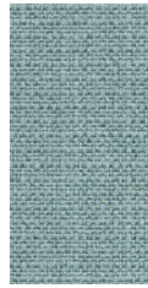
4601



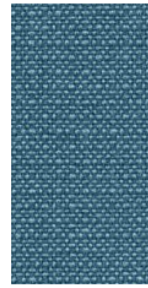
4122



4741



4751



4602



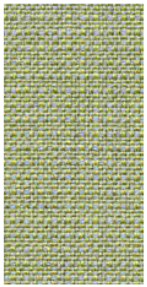
4603



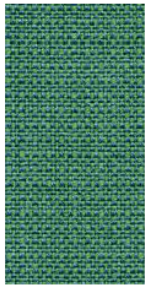
4723



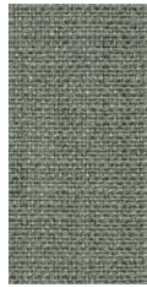
4731



4201



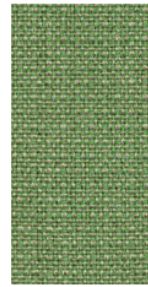
4605



4752



4761



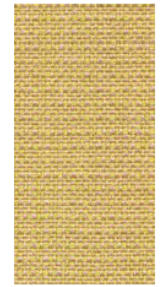
4117



4203



4211



4771

CAT B – Fiocco Fidivi

Application

Offices, contract.

Description

Composition:
100% Poliestere Trevira CS

Width:
140 cm

Weight:
620 g/ml

Tests

Abrasion
App. 60,000 Martindale rubs EN ISO 12947-2

Pilling
Note 5, EN ISO 12945-2

Light fastness
6, ISO 105-B02

Flame resistance
UNI 9174 - 8456 Class C1
UNI 9175 Class 1 IM
DIN 4102 Class B1
NF 92501-7 Class M1
NF D 60013 Class AM18
EN 1021-1 & 2

BS Crib 5
BS 7176 Class Medium Hazard
EN 13773 Class 1
OENORM 3800-1 Class B1, Q1, TR1
California TB117
USA NFPA 701
USA NFPA 260
IMO Part 8 Upholstery

Care

Dry clean or clean with foam detergents.

Samples are purely indicative because of natural inconsistencies that occur in the raw materials. As a result there may be small differences in the product delivered.



CAT B - Fiocco Fidivi



9216



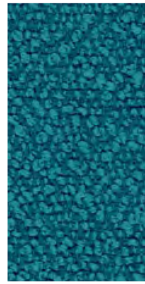
9626



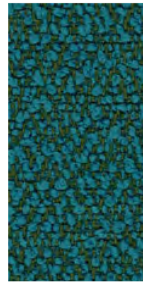
9616



9636



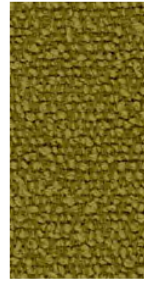
9606



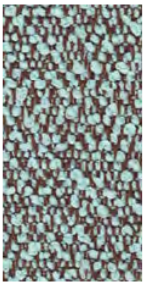
9736



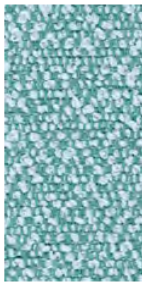
9717



9707



9206



9706

CAT B - Grain GABRIEL

Application

Offices, hotels, institutions,
domestic use.

Tests

Abrasion
App. 100,000 Martindale rubs EN ISO
12947-2

Pilling
Note 5, EN ISO 12945-2

Light fastness
Note 5-7, ISO 105-B02

Flame resistance
BS EN 1021 1&2 Cigarette and Match
BS EN 1021-1 Cigarette
CA TB 117-2013

Care

Dry clean or clean with foam detergents.

Samples are purely indicative because of
natural inconsistencies that occur in the
raw materials. As a result there may be
small differences in the product delivered.



CAT B - Grain GABRIEL



61255



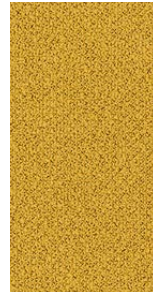
61256



62016



62121



62122



62123



63117



63118



64041



64249



64250



64251



66216



66231



66232



66233



66234



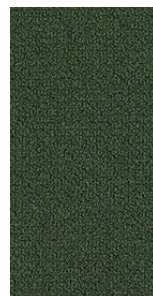
66235



66236



66237



68155



68243



68257



68258



68259



68260



Suitable for outdoor

CAT B - Iris RADA

Application

Contract and domestic use.

Description

Composition:

100% PET RECYCLED

(made with recycled plastic bottles)

Width: 140 cm

Weight: app. 800 g/in.m

Tests

Abrasion

App. 100.000 Martindale rubs
EN ISO 12947

Pilling

dry 4-5, EN ISO 12945

wet 4, EN ISO 12945

Light fastness 7, ISO 105-B02

Flame resistance

EN 1021-1/2

BS 5852, flame

BS 5852, cigarette test

IMO FTP-8 Res.A652

UNI 9175, class 1 I-M

US Cal. Tech. Bull. 117.2013

Flame retardants

According to GB/T 24279-1:2018

Care

Dry clean or clean with foam
detergents.

Samples are purely indicative because of natural inconsistencies that occur in the raw materials. As a result there may be small differences in the product delivered.



CAT B - Iris RADA



308



501



711



703



701



706



707



705



802



801

CAT B – Main Line Flex CAMIRA

Application

Offices, hotels, institutions, domestic use.

Description

Composition:
75% Virgin Wool, 25% Flax

Width:
140 cm

Weight:
437 g/m

Tests

Abrasion
App. 100,000 Martindale rubs EN ISO 12947-2

Pilling
Note 5, EN ISO 12945-2

Light fastness
4-5, ISO 105-B02

Fastness to Rubbing
Wet: 3,
Dry: 4

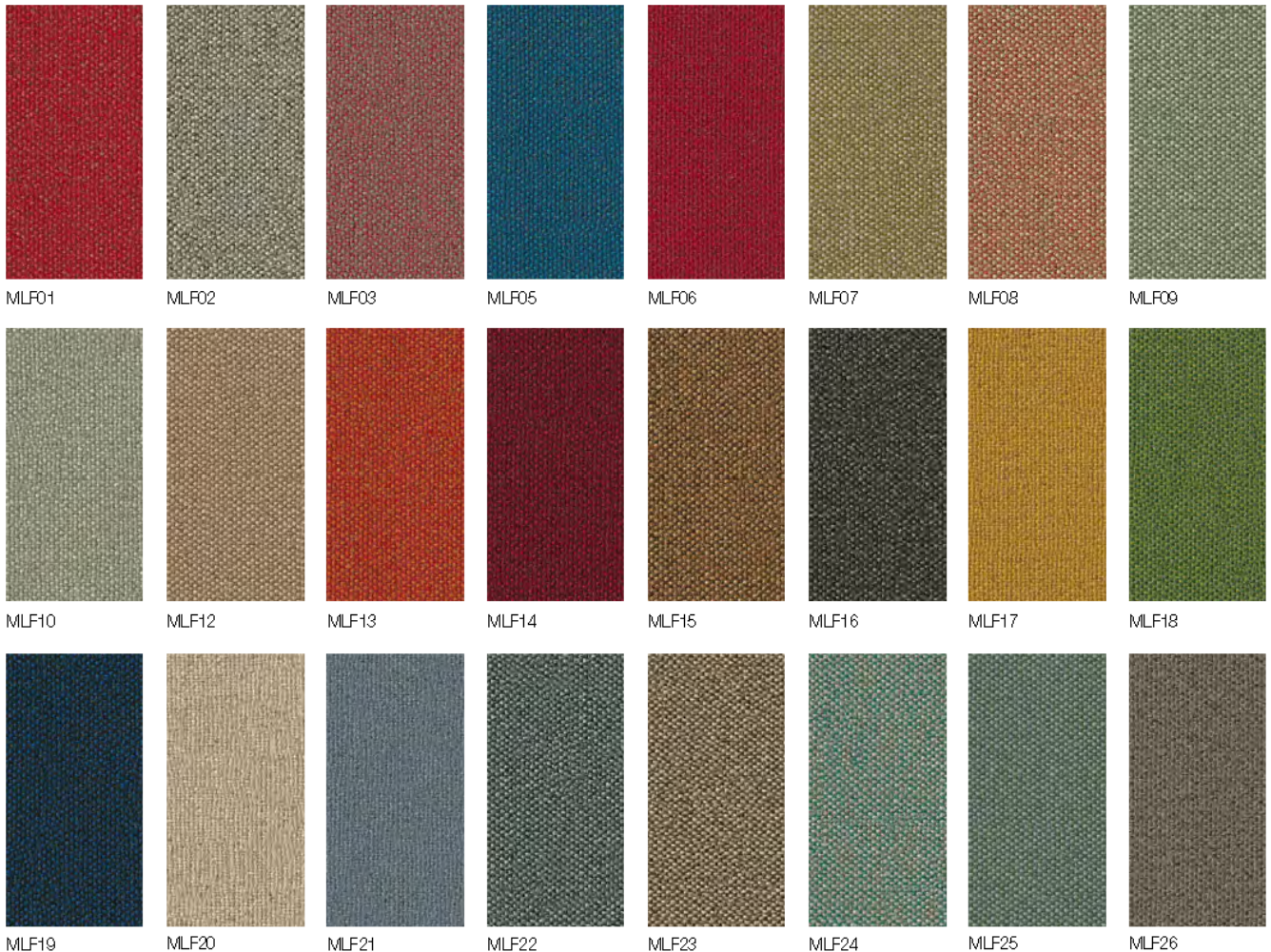
Flame resistance
EN 1021 - 1&2 (cigarette & match)
BS 7176 Low Hazard
BS 5852 Ignition Source 5

BS 7176 Medium Hazard
NF D 60-013
ÖNORM B 3825 & A 3800-1
(58kg/m³ CMHR Foam)
UNI 9175 Classe 1 IM
BS 476 Part 7 Class 1 (Adhered)
EN 13501-1 Adhered Class B, s1 ,d0
BS 5867-2: Type B Curtains & Drapes
The Furniture and Furnishing (Fire Safety) Regulations 1988 (UK domestic cigarette and match)
IMO FTP Code (Part 8)

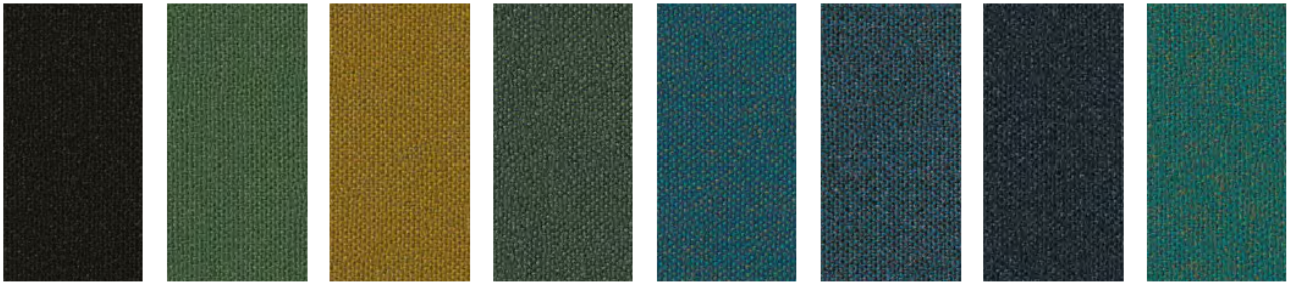
Care

Vacuum regularly. Wipe with a damp cloth using a proprietary upholstery shampoo/soap.

Samples are purely indicative because of natural inconsistencies that occur in the raw materials. As a result there may be small differences in the product delivered.



CAT B - Main Line Flex CAMIRA



MLF28

MLF29

MLF31

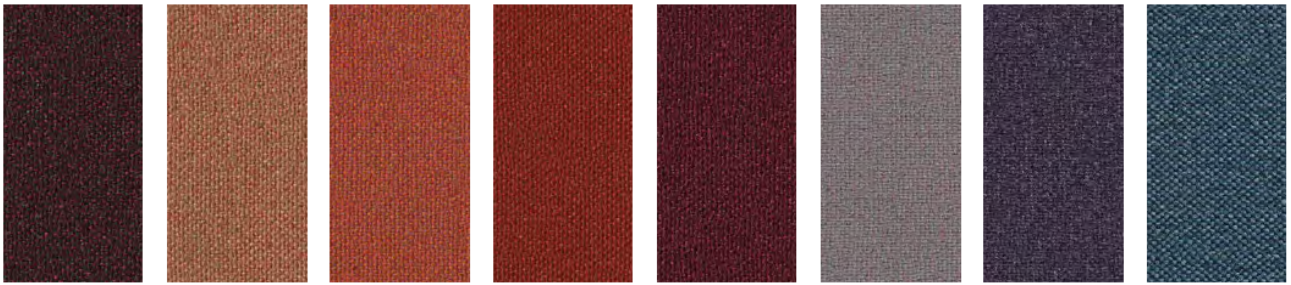
MLF32

MLF34

MLF35

MLF36

MLF37



MLF40

MLF43

MLF44

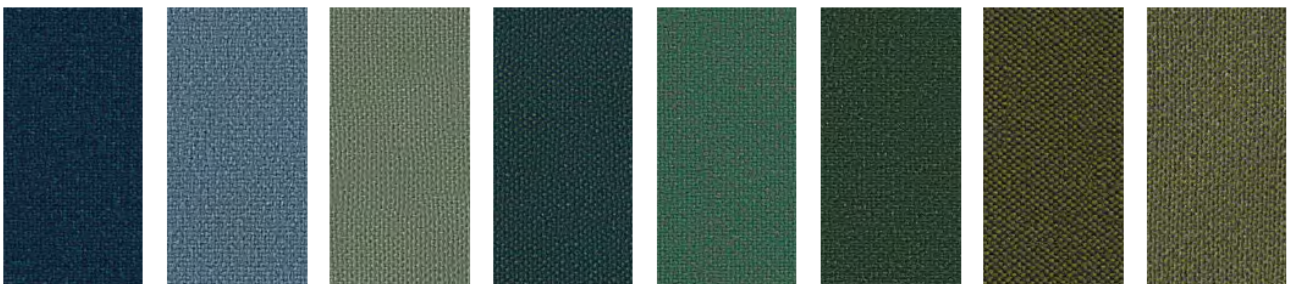
MLF45

MLF46

MLF47

MLF48

MLF49



MLF50

MLF51

MLF52

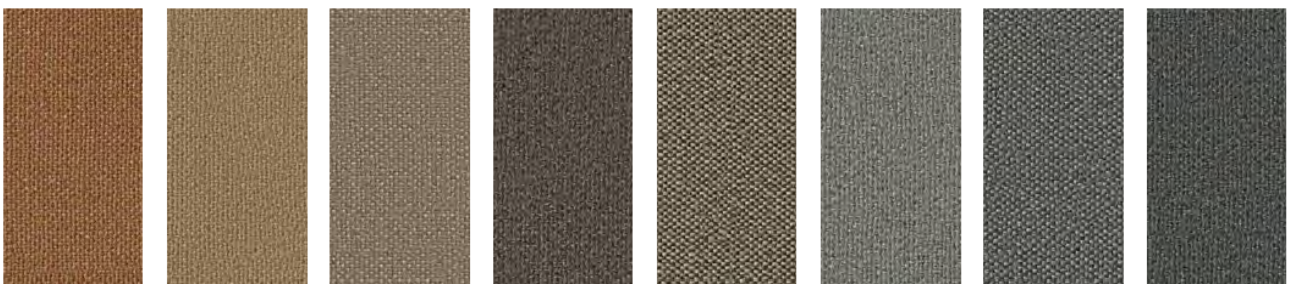
MLF53

MLF54

MLF55

MLF56

MLF57



MLF59

MLF60

MLF61

MLF62

MLF63

MLF64

MLF65

MLF66



MLF67



Suitable for outdoor

CAT B – Sorrento RADA

Application

Contract and domestic use.

Description

Composition:
50% polyester - 50% post
consumer polyester

Width:
140 cm

Weight:
530 g/m

Tests

Abrasion
App. 30,000 Martindale rubs

Color fastness
dry 4/5
wet 4

Light fastness
Note 7, ISO 105-B02

Strength of the seams
length 2mm
width 2mm

Care

Dry clean or clean with foam detergents.

Samples are purely indicative because of natural inconsistencies that occur in the raw materials. As a result there may be small differences in the product delivered.



CAT B - Umber GABRIEL

Application

Offices, hotels, institutions,
domestic use.

Description

Composition:
85% New Zealand wool, 15%
Polyamide

Width:
140 cm

Weight:
535 g/m

Tests

Abrasion
App. 200,000 Martindale rubs EN ISO
12947-2

Filling
4-5, EN ISO 12945-2

Light fastness
Note 5-6, ISO 105-B02

Rubbing fastness
dry 4-5
wet 4-5

Flame resistance
BS EN 1021 1&2 Cigarette and Match
BS EN 1021-1 Cigarette

BS EN 1021-1 Match
BS 5852 Part 1 0,1 Cigarette & Match, The
Furniture and Furnishing Regulations 1988
BS 5852 Crib 5
Class Uno UNI 9175 Class 1 IEMME
CA TB 117-2013
ASTM E 84 Class 1

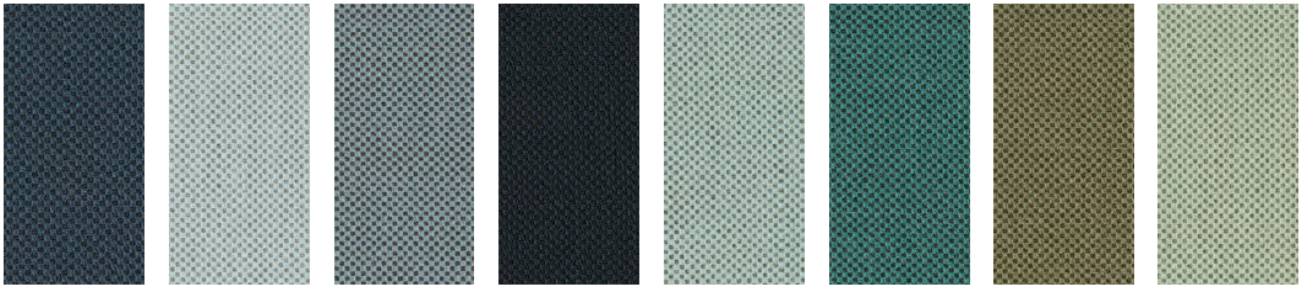
Care

Dry clean

Samples are purely indicative because of
natural inconsistencies that occur in the
raw materials. As a result there may be
small differences in the product delivered.



CAT B - Umber GABRIEL



66244

66251

66252

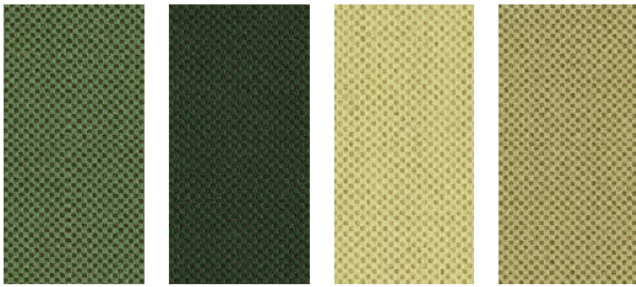
66253

67129

67130

68267

68278



68279

68280

68281

68282



Suitable for outdoor

CAT B - Fortezza 68 PRIMAFABRICS

Application

Indoor / Outdoor: Contract and domestic use.

Tests

Martindale: >50,000 rubs
Lightfastness: UNI EN ISO 105-B02
UNI EN ISO 105-B04
CLASS 4 (AATCC 16) 1.200 ore
FR: UNI 8456 - 9174 - CLASS 1 - ITALIAN
FIRE SAFETY PASS
BS EN 1021.1 : 1994 - SOURCE 0 -
CIGARETTE TEST PASS
BS EN 1021.2 : 1994 - SOURCE 1 -
BUTANE FLAME PASS ON FR FOAM
C.T.B. 117 SECTION AND PART 1 -
MARCH 2000 - CLASS 1
B1 ACCORDING TO DIN 4102, PART 1
(MAY 1998)
NFPA 260:2013
IMO 2010 FTP CODE PART 8: PASS
EN 13773 (2004) CLASSE 1

Care

Washability: 40°C in water

Samples are purely indicative because of natural inconsistencies that occur in the raw materials. As a result there may be small differences in the product delivered.





Suitable for outdoor

CAT B - Fortezza 68 PRIMAFABRICS



68 30 2



68 39 1



68 41 1



68 42 1



68 43 1



68 46 1



68 76 1



68 79 1



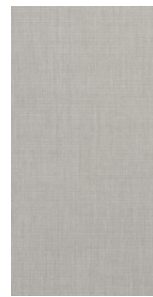
68 84 2



68 87 2



68 89 1



68 96 1



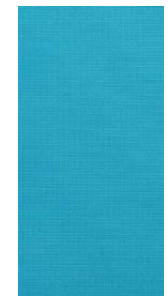
68 102 1



68 103 1



68 104 1



68 105 1



68 106 1



68 107 1



68 108 1

CAT B - Valencia SPRADLING

Application

Contract and domestic use.

Description

Composition:
front PVC

back polyester cotton

Width: 137 cm

Weight: app. 890 g/lin.m

Tests

Abrasion
App. 300.000 Martindale rubs
EN ISO 12947 part 2

UV Xenotest DIN54004 blue wool scale

Antibacterial Protection

Flame resistance
EN 1021-part 1/2
BS 5852, part 2
BS 5852 crib 5
FMVSS 302
FAR 25/853

Care

Dry clean or clean with foam
detergents.

Samples are purely indicative because of natural inconsistencies that occur in the raw materials. As a result there may be small differences in the product delivered.



CAT B - Valencia SPRADLING

							
7001 Amethyst	3068 Marine	2108 Night	3067 Delft	3001 Lavendel	3069 Baltic	5057 Türkis	2106 Coral
							
5056 Jade	2119 Teal	4043 Platin	5065 Petrol	4042 Titan	2107 Skylight	4040 Auster	4045 Perle
							
4044 Warm Grey	2116 Camel	2117 Cashmere	0035 Terracotta	2115 Chestnut	0033 Buche	9035 Schwarz	4003 Graphite
							
2109 Citrus	2110 Avocado	5041 Apfel	5001 Olive	5069 Grün	4052 Lichtgrau	4002 Laurel	4020 Silver
							
6020 Gold	1020 Ivory	8020 Pearlescence	6003 Nectarine	9001 Sumatra	4001 Mushroom	0002 Cognac	1001 Champagne

CAT B - Valencia SPRADLING



5002
Moss



2001
Merlot

Cat C – Blazer CAMIRA

Application

Offices, hotels, institutions, domestic use.

Description

Composition:
100% Virgin Wool

Width:
140 cm

Weight:
460 g/m

Tests

Abrasion
App. 100,000 Martindale rubs EN ISO 12947-2

Light fastness
4-6, ISO 105-B02

Fastness to Rubbing
Wet: 4,
Dry: 4

Flame resistance
EN 1021 - 1&2 (cigarette & match)
BS 7176 Low Hazard
BS 5852 Ignition Source
5 when FR treated
BS 7176 Medium
Hazard when FR treated
NFD 60-013
ÖNORM B 3825 & A 3800-1

(58kg/m³ CMHR Foam)
UNI 9175 Classe 1 IM
IMO FTP Code (Part 8)
BS 476 Part 0 when FR treated (Adhered)
EN 13501-1 Adhered Class B, s1, d0
EN 13501-1 Un-adhered Class
D, s2, d0 when FR treated
BS 5867-2 Type B Curtains
& Drapes when FR treated
EN 13773 Class 1 (when FR treated)
BS 5867-2: Type B Curtains & Drapes
The Furniture and Furnishing (Fire Safety)
Regulations 1988 (UK domestic cigarette
and match)

Care

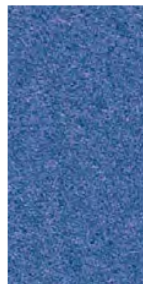
Vacuum regularly. Wipe with a damp cloth
using a proprietary upholstery shampoo/
soap.



CUZ4H
Perth



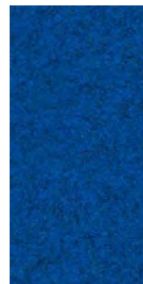
CUZ1R
Plymouth



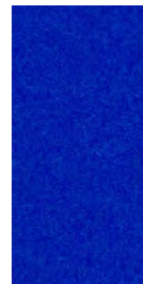
CUZ1V
Manchester



CUZ3C
Marymount



CUZ3Z
Ellesmere



CUZ4P
Dundee



CUZ3X
Tettenhall



CUZ09
Oxford



CUZ4J
Norland



CUZ4B
Brockenhurst



CUZ1W
Newcastle



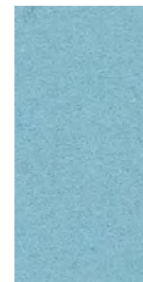
CUZ26
Knightsbridge



CUZ1Y
Edinburgh



CUZ62
Glenalmond



CUV2Z
Woodcroft



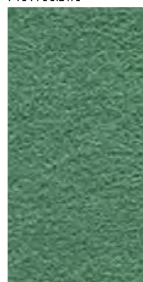
CUZ33
Latymer



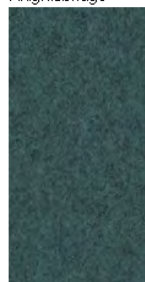
CUZ02
Aston



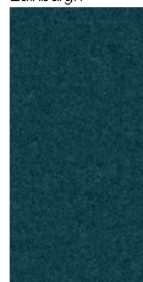
CUZ2U
Vassar



CUZ2Y
Tyndale



CUZ4G
Ambleside



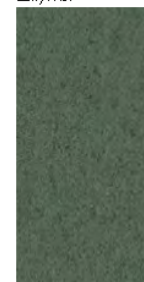
CUZ1P
Hull



CUZ4S
Ullwater



CUZ4K
Moray



CUZ3R
Stowe

Cat C – Blazer CAMIRA

							
CUZ4V Heathfield	CUZ4F Bodmin	CUZ3B Albertay	CUZ3A Montcrest	CUZ3Y Oakham	CUZ2X Penola	CUZ53 Bryanston	CUZ1L Newport
							
CUZ3M Lucton	CUZ2W Eynesbury	CUZ32 Wesley	CUZ58 Dunhurst	CUZ1F Ulster	CUZ3U Kingham	CUZ1K Camphill	CUZ1N Cardiff
							
CUZ1M Glasgow	CUZ4E Grantham	CUZ28 Silverdale	CUZ1E Surrey	CUZ4W Stonebridge	CUZ30 Silcoates	CUZ12 Winchester	CUZ35 Broomsgrove
							
CUZ2Q Dartmouth	CUZ36 St Andrews	CUZ31 Trevelyan	CUZ1J Aberlour	CUZ67 Kingsmead	CUZ08 Napier	CUZ47 Fairfield	CUZ4X Bristol
							
CUZ4A Caterham	CUZ3E Scottsdale	CUZ2S Barnard	CUZ4D Dunak	CUZ4M Falmouth	CUZ1T Sheffield	CUZ4C Chichester	CUZ4T Moorlands

Cat C – Blazer CAMIRA



CAT C - Canvas 2 KVADRAT

Design

Giulio Ridolfo

Application

Offices, hotels, institutions, domestic use.

Description

Composition:

90% new wool, 10% nylon

Yarn type: Worsted

Binding: Semi-plain weave

Width: 140 cm

Weight: app. 480 g/lin.m

Samples are purely indicative because of natural inconsistencies that occur in the raw materials. As a result there may be small differences in the product delivered.

Tests

Abrasion

App. 100.000 Martindale rubs
EN ISO 12947

Pilling

Note 4-5, EN ISO 12945

Light fastness

Note 5-7, ISO 105-B02

Flame resistance

EN 1021-1/2

BS 5852 part 1

BS 5852, ignition source 2-3

DIN 4102 B2

Önorm B1/Q1

NF D 60 013

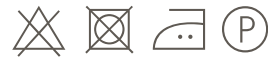
UNI 9175, 1IM

US Cal. Tech. Bull. 117

IMO A.652(16)

Care

Dry clean or clean with foam detergents.



114



224



244



264



174



154



134



124



216



414



446



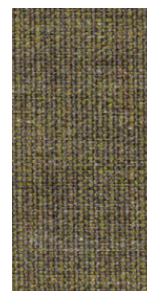
926



946



954



964



424



716



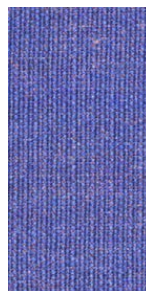
836



726



746



666



734



786



794

CAT C - Canvas 2 KVADRAT



684



764



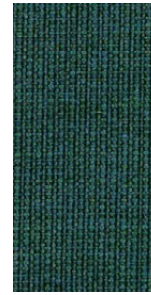
854



996



974



984



364



674



694



654



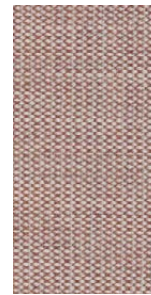
576



644



356



614



566



546



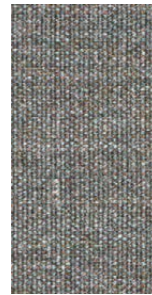
556



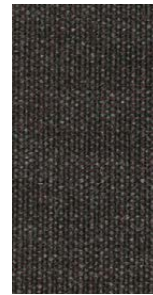
454



254



936



374



Suitable for outdoor

Cat C – Atrium KVADRAT

Application

Outdoor

Description

Composition:
100% Trevira CS

Width:
140 cm

Weight:
470 g/m

Tests

Abrasion
App. 50,000 Martindale rubs EN ISO 12947-2

Pilling
5, EN ISO 12945-2

Light fastness
6-7, ISO 105-B02

Rubbing fastness
dry 5
wet 5

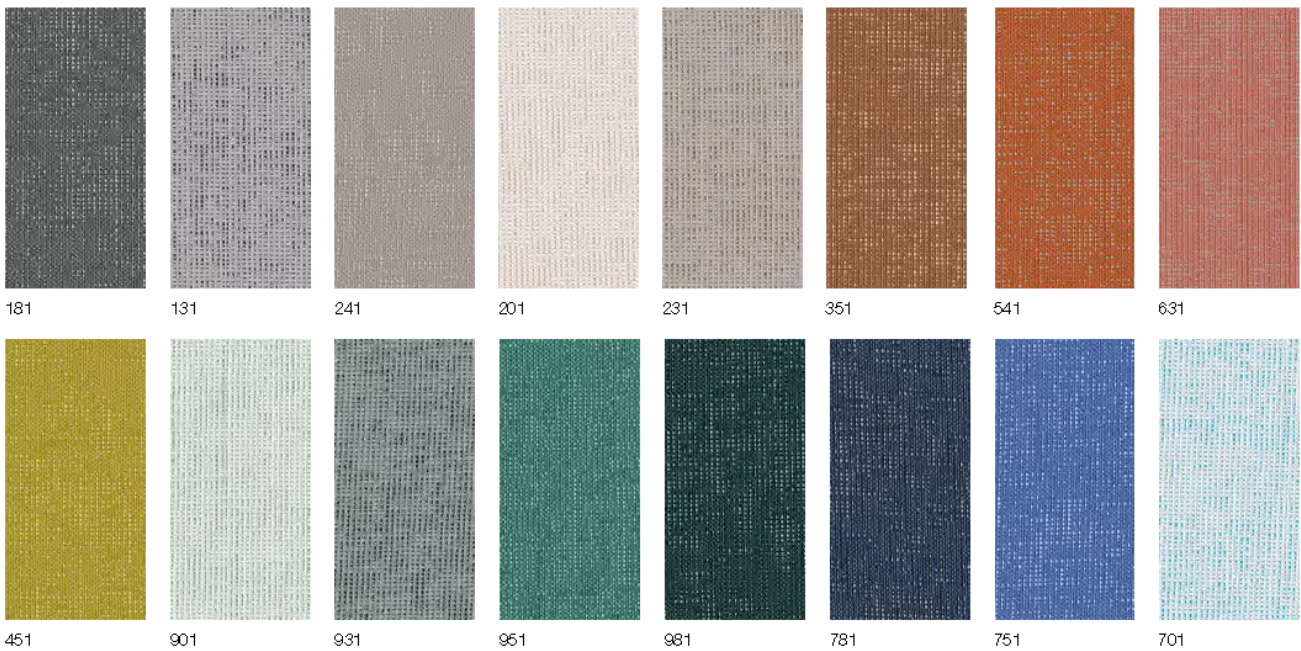
Flame resistance
NFD 60 013
US Cal. Bull. 117-2013
NFPA 701

BS 5852 Crib 5
EN 1021-1/2
AS/NZS 3837 class 1
IMO FTP Code 2010 Part 8
ASTM E84 Class B Adhered
DIN 4102 B1
NF P 92 507 M1
JIS L 1091 A-1 D
UNI 9175 1IM
UNI 9177 Classe 1
BS 5867 part 2 type B
CAN ULC S102
BS 7176 Low Hazard
CAN ULC S109
GB 8624 B1
ASTM E84 Class A Unadhered

Care

Dry clean

Samples are purely indicative because of natural inconsistencies that occur in the raw materials. As a result there may be small differences in the product delivered.



CAT C - Fiord 2 KVADRAT

Design

Louise Sigvardt & Tone Barnung

Application

Offices, hotels, institutions, domestic use.

Description

Composition: 92% new wool, 8% nylon
 Yarn type: Worsted
 Binding: Dobby
 Width: App. 140 cm (app. 55 inches)
 Weight: App. 500 g/lin.m

Samples are purely indicative because of natural inconsistencies that occur in the raw materials. As a result there may be small differences in the product delivered.

Tests

Abrasion
 App. 60.000 Martindale rubs
 EN ISO 12947

Pilling
 Note 4-5, EN ISO 12945

Light fastness
 Note 5-7, ISO 105-B02

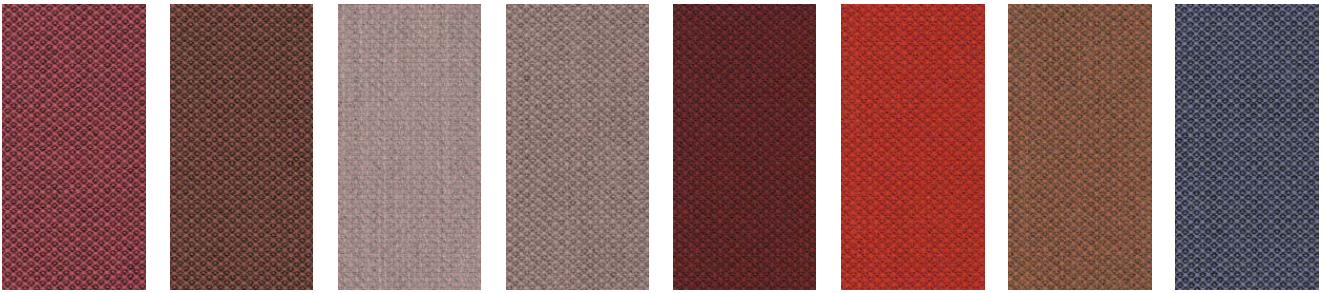
Flame resistance
 EN 1021-1/2
 BS 5852 part 1
 DIN 4102 B2
 NF D 60 013
 UNI 9175 1IM
 US Cal. Bull. 117-2013
 IMO FTP Code 2010:Part 8
 With flame retardant treatment:
 BS 5852 Crib 5

Care

Vacuuming and dry cleaning



CAT C - Fiord 2 KVADRAT



662

642

521

551

581

571

562

672



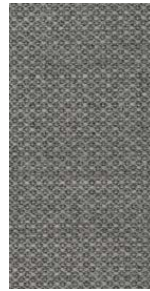
201



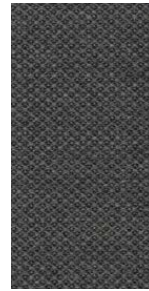
101



251



151



171



121



191

Cat C – Naveli KVADRAT

Application

Contract and domestic use.

Description

Composition:
100% new wool, worsted

Width:
140 cm

Weight:
540 g/m

Tests

Abrasion
50,000 Martindale rubs

Pilling
4-5, ISO 1-5 (EN ISO 12945)

Light fastness
6- 7, ISO 1-5 (ISO 105-B02)

Fastness to rubbing
dry 4-5
wet 4-5

Flame resistance
NFD 60 013
US Cal. Bull. 117-2013
EN 1021-1/2

IMO FTP Code 2010 Part 8
BS 5852 part 1
ASTM E84 Class A Adhered
UNI 9175 1IM
ÖNORM B1/Q1
BS 7176 Low Hazard
AS/NZS 3837 class 2
SN 198 898 5.3 with treatment
ASTM E84 Class A Unadhered
BS 5852 crib 5 with treatment

Care

Do not wash, bleach, tumble dry.
Iron at medium temperature (max. 150°C)
Professional dry cleaning

Samples are purely indicative because of natural inconsistencies that occur in the raw materials. As a result there may be small differences in the product delivered.



Cat C – Nobel GABRIEL

Application

Contract and domestic use.

Description

Composition:
100% New Zealand wool

Width:
140 cm

Weight:
800 g/m

Tests

Abrasion
75,000 Martindale rubs

Pilling
4-5, ISO 1-5 (EN ISO 12945)

Light fastness
5- 7, ISO 1-5 (ISO 105-B02)

Fastness to rubbing
dry 4-5
wet 4-5

Flame resistance
BS EN 1021 1&2 Cigarette and Match
BS 5852 Part 1 0,1 Cigarette & Match, The
Furniture and Furnishing Regulations 1988

Class Uno UNI 9175 Class 1 | EMME
IMO MSC 307(88) Annex 1 part 8
IMO MSC 307(88) Annex 1 part 8 UK
MED Certificate IMO
MED Certificate IMO UK
CA TB 117-2013
ASTM E 84 Class 2

Care

Dry cleaning P(S)

Samples are purely indicative because of natural inconsistencies that occur in the raw materials. As a result there may be small differences in the product delivered.



Cat C - Nobel GABRIEL



66267



66268



67136



68302



68303



68304

CAT C - Hallingdal 65 KVADRAT

Design

Nanna Ditzel

Application

Offices, hotels,
institutions, domestic use.
Great durability

Description

Composition:
70% new wool, 30% viscose

Yarn type: Stapel

Binding: Plain

Width: 130 cm

Weight: app. 795 g/lin.m

Samples are purely indicative because of natural inconsistencies that occur in the raw materials. As a result there may be small differences in the product delivered.

Tests

Abrasion
App. 100.000 Martindale rubs
EN ISO 12947

Pilling
Note 3, EN ISO 12945

Light fastness
Note 5-7, ISO 105-B02

Flame resistance
EN 1021-1/2
BS 5852, ignition source 2-5
DIN 4102 B2
Onorm B1/Q1
UNI 9175/UNI 9176, 1IM
US Cal. Tech. Bull. 117
IMO A.652(16)

Care

Dry clean or clean with foam
detergents.



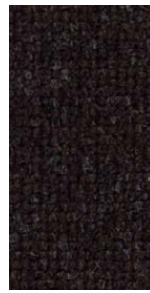
CAT C - Hallingdal 65 KVADRAT



370



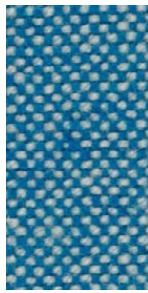
368



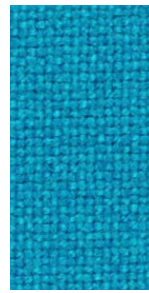
376



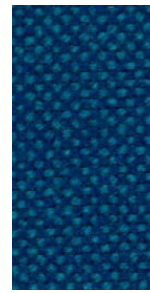
390



840



850



810



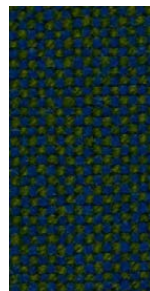
723



733



750



890



753



754



773



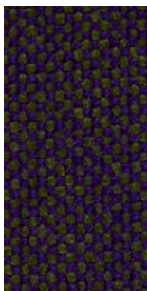
764



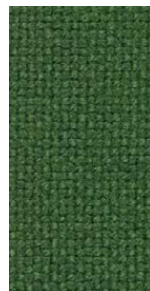
763



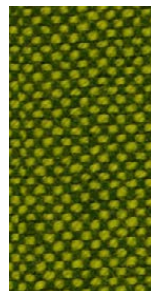
702



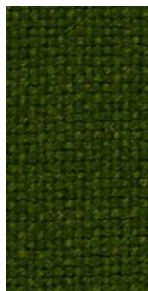
968



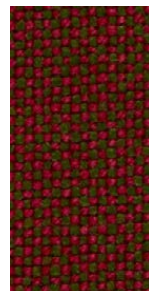
944



980



960



660



563



573



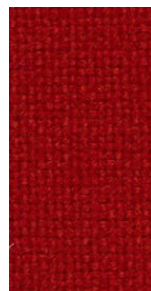
694



687



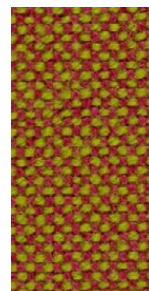
657



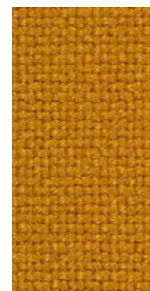
674



680



526



547



590



600



596

CAT C - Remix 3 KVADRAT

Design

Giulio Ridolfo

Application

Offices, hotels, institutions, domestic use. Great durability

Description

Composition: 90% new wool, 10% nylon
 Yarn type: Stapel, worsted
 Binding: Plain weave
 Width: 140 cm
 Weight: app. 460 g/lin.m

Samples are purely indicative because of natural inconsistencies that occur in the raw materials. As a result there may be small differences in the product delivered.

Tests

Abrasion
 App. 100.000 Martindale rubs, EN ISO 12947

Pilling
 Note 3-4, EN ISO 12945

Light fastness
 Note 5-7, ISO 105-B02

Flame resistance
 EN 1021-1/2
 BS 5852, ignition source 2-3
 Onorm B1/Q1
 UNI 9175, 1IM
 Cal. Tech. Bull. 117, Sec. E
 IMO A.652(16)

Care

Dry clean or clean with foam detergents.



CAT C - Remix 3 KVADRAT



543

536

516

852

753

873

716

836



733

743

796

906

996

973

982

933



923

912

842

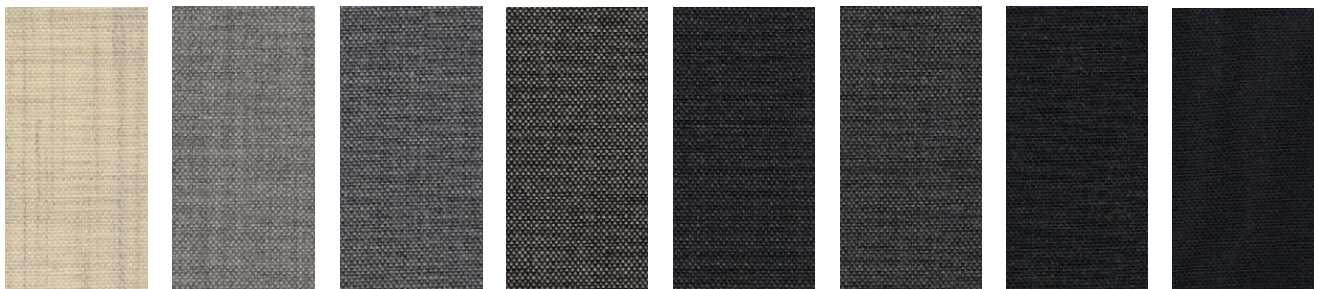
962

954

126

136

133



113

123

143

152

173

163

183

196



566

643

632

653

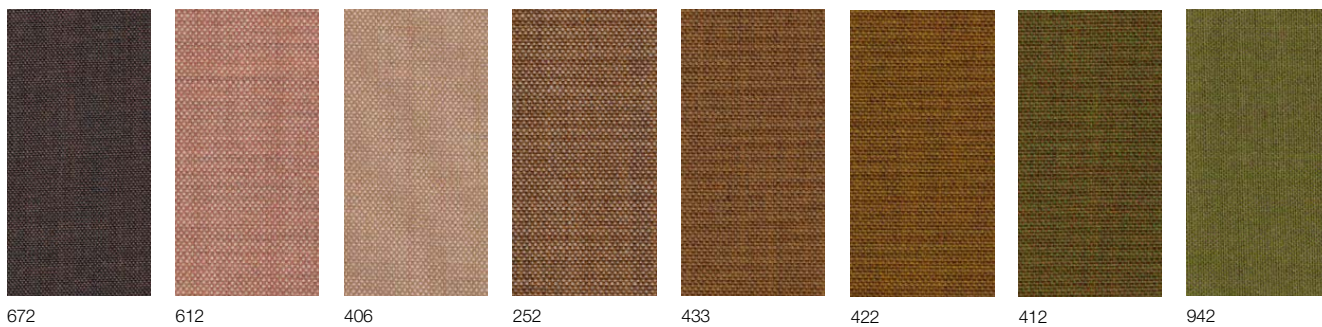
383

662

373

362

CAT C - Remix 3 KVADRAT



672

612

406

252

433

422

412

942

CAT C - Tonica 2 KVADRAT

Design

Georgina Wright

Application

Offices, hotels, institutions, domestic use.

Description

Composition: 100% new wool

Yarn type: Stapel

Binding: Plain

Width: 140 cm

Weight: app. 700 g/lin.m

Tests

Abrasion
App. 45.000 Martindale rubs,
EN ISO 12947

Pilling
Note 4-5, EN ISO 12945

Light fastness
Note 5-7, ISO 105-B02

Flame resistance
EN 1021-1/2
BS 5852, ignition source 2-4
DIN 4102 B2
Önorm B1/Q1
UNI 9175/UNI 9176, 1IM
Cal. Tech. Bull. 117, Sec. E
IMO A.652(16)

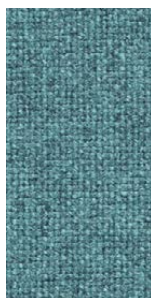
Care

Vacuuming and dry cleaning

Samples are purely indicative because of natural inconsistencies that occur in the raw materials. As a result there may be small differences in the product delivered.



CAT C - Tonica 2 KVADRAT



831



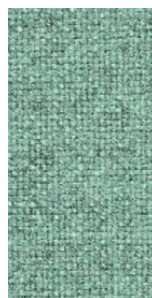
832



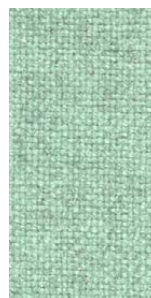
873



962



933



923



613



523



533



511



543



531



611



643



612



Suitable for outdoor

CAT C - Lapalma Smart

Application

Contract and domestic use

Description

Composition:
100% SOLUTION DYED ACRILIC
Width: 140cm
Weight Gr./mtl.: 700

Tests

Shrinkage after dry cleaning
Warp: -1 % Weft: -1 %

Shrinkage after washing
Warp: -3 % Weft: -3 %

Resistance to PILLING
after 2000 cycles
Note 4 EN ISO 12945-2

Abrasion
20000 Cidli EN ISO 12947-2

Light fastness
Note 7/8 EN ISO105B02

Color fastness to washing
Note 5 EN ISO105C06

Color fastness to dry Cleaning
Note 5 EN ISO105D01

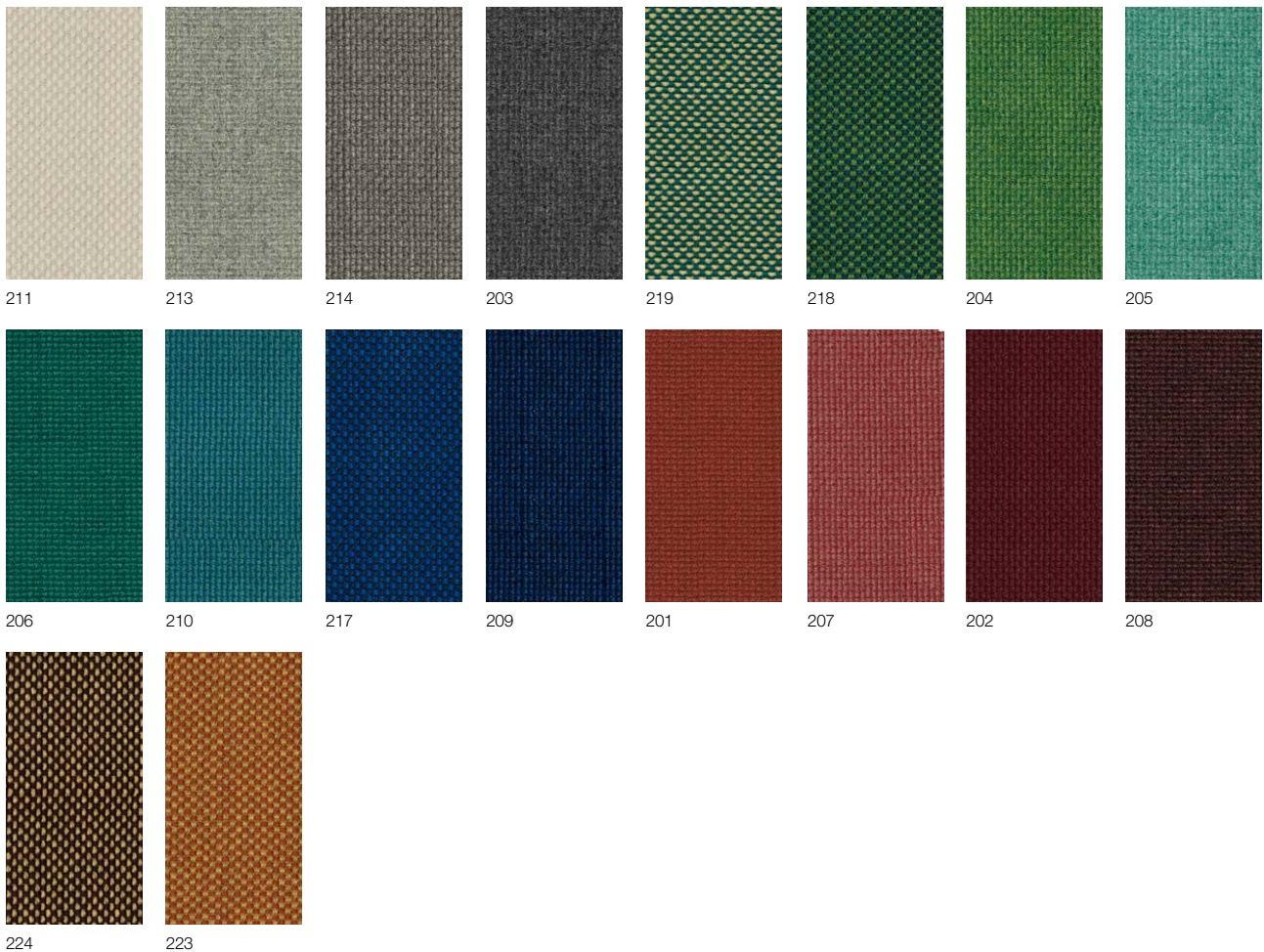
Color fastness
to crocking Test WET
Note 4/5 EN ISO105X12

Color fastness
to crocking Test DRY
Note 5 EN ISO105X12

Care

Cleaning: Vacuuming
Mount in moist condition.
Mildew growth is not promoted
by the textile but mildew may
grow on dirt and other foreign
substances if not removed.
Keep the textile dry to avoid
mildew spores to stick.

Samples are purely indicative because of natural inconsistencies that occur in the raw materials. As a result there may be small differences in the product delivered.



Cat C – Re-wool KVADRAT

Application

Offices, hotels, institutions, domestic use. Great durability.

Tests

Abrasion
 App. 100.000 Martindale rubs
 EN ISO 12947
 Pilling
 Note 4, EN ISO 12945
 Light fastness
 Note 5-7, ISO 105-B02
 Flame resistance
 AS/NZS 1530.3
 AS/NZS 3837 class 2
 BS 5852 crib 5 with treatment *
 BS 5852 ignition source 3
 BS 5852 part 1
 EN 1021-1/2
 EN 13501 B-s2, d0 wrapped, with treatment *
 IMO FTP Code 2010 Part 8
 NF D 60 013
 ÖNORM B1/Q1
 SN 198 898 5.3 with treatment *

Care

Dry clean or clean with foam detergents.

Samples are purely indicative because of natural inconsistencies that occur in the raw materials. As a result there may be small differences in the product delivered.



CAT D – Divina MD KVADRAT

Design

Finn Skodt

Application

Offices, hotels, institutions, domestic use.

Description

Composition:

100% new wool

Yarn type: Stapel

Binding: 4-end broken twill

Width: 150 cm

Weight: app. 820 g/lin.m

Tests

Abrasion

App. 45.000 Martindale rubs, EN ISO 12947

Pilling

Note 3, EN ISO 12945

Light fastness

Note 5-7, ISO 105-B02

Flame resistance

EN 1021-1/2

BS 5852, ignition source 2-5

DIN 4102 B2

Onorm B1/Q1

NF D 60 013

UNI 9175 1IM

US Cal. Tech. Bull. 117

AS.NZS 1530.3

IMO A.652(16)

Care

Dry clean or clean with foam detergents.

Samples are purely indicative because of natural inconsistencies that occur in the raw materials. As a result there may be small differences in the product delivered.



CAT D - Divina MD KVADRAT



633



613



433

CAT D - Divina Melange 3 KVADRAT

Design

Finn Sködt

Application

Offices, hotels, institutions, domestic use.

Description

Composition:

100% New wool

Yarn type: Stapel

Binding: 4-end broken twill

Width: 150 cm

Weight: app. 820 g/lin.m

Tests

Abrasion

App. 45.000 Martindale rubs
EN ISO 12947

Pilling

Note 3, EN ISO 12945

Light fastness

Note 7, ISO 105-B02

Flame resistance

EN 1021-1/2

BS 5852, ignition source 2-5 DIN 4102 B2

Önorm B1/Q1

UNI 9175/UNI 9176, 1IM

US Cal. Tech. Bull. 117

IMO A.652(16)

Care

Dry clean or clean with foam detergents.

Samples are purely indicative because of natural inconsistencies that occur in the raw materials. As a result there may be small differences in the product delivered.



0575/13



Flame Resistant



WOOL OF NEW ZEALAND



CAT D - Divina Melange 3 KVADRAT



547



527



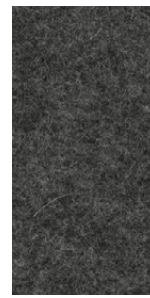
517



571



180



170



147



120



917



937



977



967



821



871

CAT D - Steelcut 3 KVADRAT

Design

Frans Dijkmeijer
Giulio Ridolfo

Application

Offices, hotels,
institutions, domestic use.
Great durability

Description

Composition:
90% new wool, 10% nylon
Yarn type: Stapel, worsted
Binding: Semi-plain

Width: 140 cm

Weight: app. 825 g/lin.m

Tests

Abrasion
App. 100.000 Martindale rubs,
EN ISO 12947

Pilling
Note 3-4, EN ISO 12945

Light fastness
Note 5-6, ISO 105-B02

Flame resistance

AS/NZS 1530.3
AS/NZS 3837 class 2
ASTM E84 Class A Unadhered
ASTM E84 Class B Adhered
BS 5852 crib 5 with treatment *
BS 5852 part 1
EN 1021-1/2
IMO FTP Code 2010 Part 8
NF D 60 013
NFPA 260
ÖNORM B2/Q1
SN 198 898 5.3 with treatment *
UNI 9175 1IM
US Cal. Bull. 117-2013

Care

Vacuuming and dry cleaning.

Samples are purely indicative because of natural inconsistencies that occur in the raw materials. As a result there may be small differences in the product delivered.



CAT D - Steelcut 3 KVADRAT



652



655



662



672



682



695



732



742



775



780



912



922



932



962



975



985

CAT D - Steelcut Trio 3 KVADRAT

Design

Frans Dijkmeijer
Giulio Ridolfo

Width: 140 cm
Weight: app. 770 g/lin.m

Flame resistance
EN 1021-1/2
BS 5852, ignition source 2
DIN 4102 B2
Onorm B1/Q1
Italian Class 1IM
US Cal. Tech. Bull. 117
IMO A.652(16)

Application

Offices, hotels,
institutions, domestic use.
Great durability

Tests

Abrasion
App. 100.000 Martindale rubs,
EN ISO 12947

Pilling
Note 3-4, EN ISO 12945

Light fastness
Note 5-7, ISO 105-B02

Care

Vacuuming and dry cleaning.

Description

Composition:
90% new wool, 10% nylon
Yarn type: Stapel, worsted
Binding: Semi-plain

Samples are purely indicative because of natural inconsistencies that occur in the raw materials. As a result there may be small differences in the product delivered.



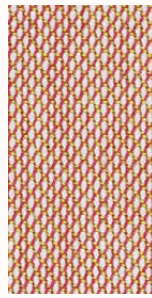
CAT D - Steelcut Trio 3 KVADRAT



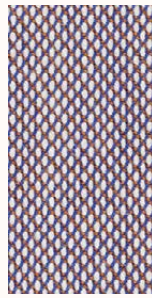
533



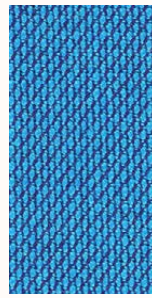
526



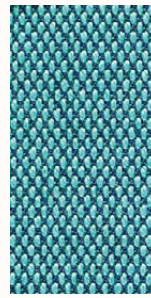
515



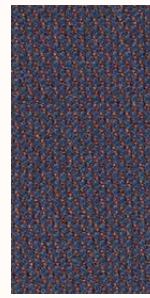
806



865



983



776



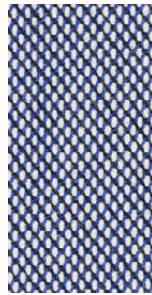
756



883



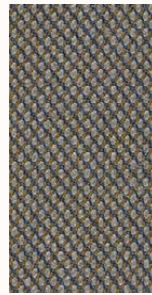
796



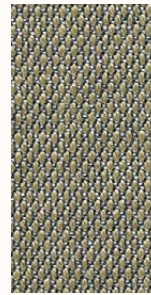
716



746



266



253



205



246



283



376



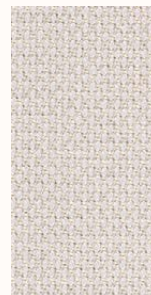
383



276



336



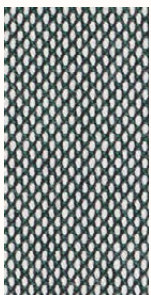
226



213



996



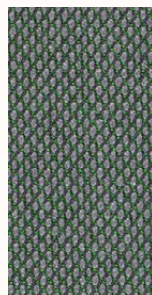
916



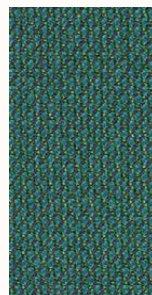
906



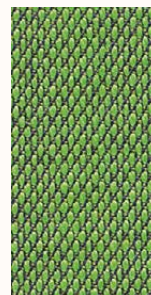
946



966



976



953

CAT E - Uniform Melange KVADRAT

Design

Feabrik

Application

Contract and domestic use.

Description

Composition:
68% new wool, 22% viscose
10% polyester 2mm foam
Width: 165 cm
Weight: app. 870 g/lin.m

Tests

Abrasion
App. 100.000 Martindale rubs,
EN ISO 12947

Pilling
Note 4, EN ISO 12945

Light fastness
6, ISO 105-B02

Flame resistance
EN 1021-1/2
BS 5852,part 1
DIN 4102 B2
Onorm B1/Q1
UNI 9175/UNI 9176, 1IM
US Cal. Tech. Bull. 117.2013
IMO FTP code 2010:part 8

Care

Dry clean or clean with foam
detergents.

Samples are purely indicative because of natural inconsistencies that occur in the raw materials. As a result there may be small differences in the product delivered.



CAT E - Uniform Melange KVADRAT



813



963



833



883



983



993



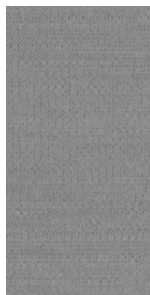
453



933



913



123



133



163



183



193

Pelle Seta – Soft Leather

Application

Offices, hotels, institutions, domestic use.

Tests

Dry rub fastness
UNI EN ISO 11640 > 3 Grey Scale

Light fastness
UNI EN ISO 105-B02 > 4 Blue Scale
Colour fastness to -and-fro rubbing
Tear Resistance
UNI EN ISO 3377-1 > 20 N

Flame resistance
UNI EN 1021-1 No ignition
UNI EN 1021-2 No ignition

Flexing endurance
> 20000 cycles
UNI EN ISO 17233
Cold crack 1esi stance of finish -15°C
No crack

Care

For a normal cleaning we suggest to dust with a soft and dry cloth. Any stain can be removed using a damp cloth and delicate cleaning products such as a neutral soap or detergent. Do not wipe the surface but just buffer from the edges to the stain centre. It is absolutely forbidden to use abrasive or aggressive products such as solvents, stain removers etc. Do not use steam. For the most resistant stains contact the supplier.

Samples are purely indicative because of natural inconsistencies that occur in the raw materials. As a result there may be small differences in the product delivered.



9000
Latte

9012
Zenzero

9018
Bird

9020
Tartufo

9022
Minerale

9049
Custard

9001
Dalia

9063
Acerò

9006
Teak

9004
Mattone

9009
Acacia

9030
Cardamomo

9015
Carrara

9016
Elefante

9036
Oltremare

9073
Novembre

9023

Cuoio Leather

Application

Contract and domestic use.

Description

Thickness 2.4 - 2.5 mm

Cow hides

Vegetable tannage

Finishing Pigmented

Tests

Dry rub fastness
UNI EN ISO 11640
1000 cycles 5 Grey Scale

Wet rub fastness
UNI EN ISO 11640
250 cycles 5 Grey Scale

Light fastness
UNI EN ISO 105-B01
72h 4-5 Grey Scale

Adhesion of finishing
UNI EN ISO 11644 >15 N/10mm

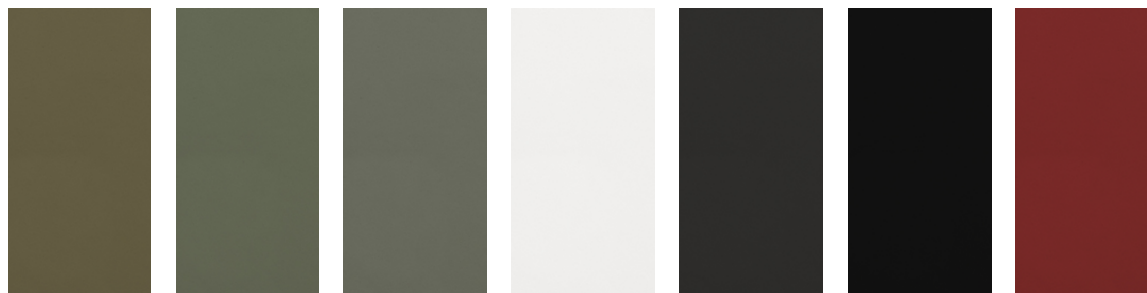
Flex resistance
UNI EN ISO 5402
20000 cycles no damages

Taber abrasion
500 cycles CS10
load 500 gr. 4-5 grey scale

Care

Dust with a soft and dry cloth for the normal cleaning. Stains can be treated with a wet cloth or cotton wool and with products for the cleaning initially more delicate like neutral soap or cleansing milk. Dry immediately after treatment. Never use abrasive or aggressive products like solvents, stain removers. Never steam it. Don't use shoe cleaning products. When a new product is used for cleaning, apply it in a "hidden" area to test its effectiveness and to avoid damages where more visible. Avoid placing leather near direct sun. Keep the leather away from heat sources. Dust regularly with a soft and dry cloth.

Samples are purely indicative because of natural inconsistencies that occur in the raw materials. As a result there may be small differences in the product delivered.



C3
Fango chiaro

C10
Grigio

C7
Fango scuro

C4
Bianco

C9
Marrone scuro

C1
Nero

C2
Rosso